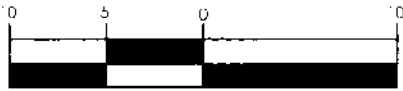
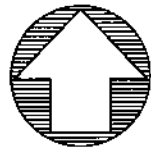


GRAPHIC SCALE



1" = 10'



NORTH

SURVEY EXHIBIT OF PROPOSED 0.017 ACRE TRACT
PART OF LAND OF CENTRAL OHIO COMMUNITY LAND TRUST CORPORATION
CITY OF COLUMBUS, COUNTY OF FRANKLIN, STATE OF OHIO
PART OF LOT NUMBERS 57, 58, & 59 OF B.F. MARTIN WESTERN ADDITION

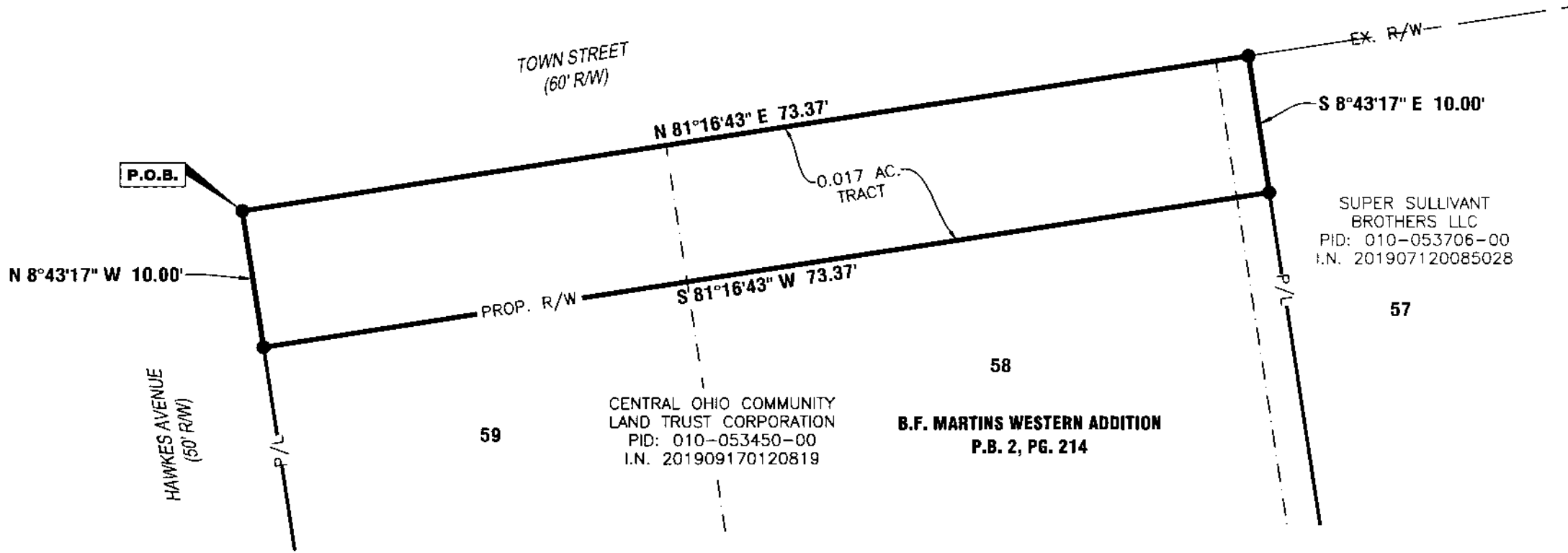


OFFICES

128 East Main Street
Logan, Ohio 43138
740-385-2140

1495 Old Henderson Road
Columbus, Ohio 43220
614-459-6992

507 Main Street
Zanesville, Ohio 43701
740-450-1640



SUPER SULLIVANT
BROTHERS LLC
PID: 010-053706-00
I.N. 201907120085028

CENTRAL OHIO COMMUNITY
LAND TRUST CORPORATION
PID: 010-053450-00
I.N. 201909170120819

B.F. MARTINS WESTERN ADDITION
P.B. 2, PG. 214

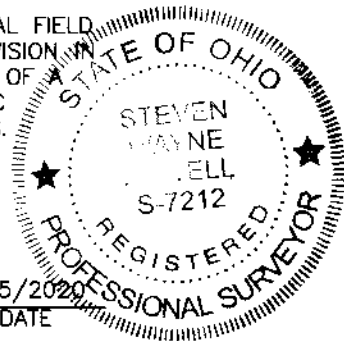
CERTIFICATION

THIS DRAWING IS REPRESENTATIVE OF AN ACTUAL FIELD SURVEY PERFORMED UNDER MY DIRECT SUPERVISION ON JULY, 2019. THIS DRAWING IS REPRESENTATIVE OF A BOUNDARY SURVEY IN CONFORMANCE WITH OAC 4733-37 STANDARDS FOR BOUNDARY SURVEYS.

SANDS DECKER OPS

STEVEN W. NEWELL
OHIO PROFESSIONAL
SURVEYOR 7212

11/05/2020
DATE



SURVEYOR'S NOTES

- 1) BASED ON RECORDS ON FILE AT THE FRANKLIN COUNTY RECORDER'S OFFICE AND THE FRANKLIN COUNTY ENGINEER'S OFFICE.
- 2) REFERENCES: ALL DOCUMENTS NOTED HEREON.
- 3) BEARINGS ARE BASED ON THE OHIO STATE PLANE COORDINATE SYSTEM - OHIO SOUTH ZONE (NAD83) BY GPS OBSERVATION, REFERENCED TO THE ODOT VRS NETWORK.
- 4) ALL IRON PINS SET ARE 3/4" INSIDE DIAMETER IRON PIPES, 30" IN LENGTH WITH A 1" DIAMETER YELLOW CAP STAMPED "SANDS DECKER."

● IRON PIN SET

C:\Users\gbrown\Desktop