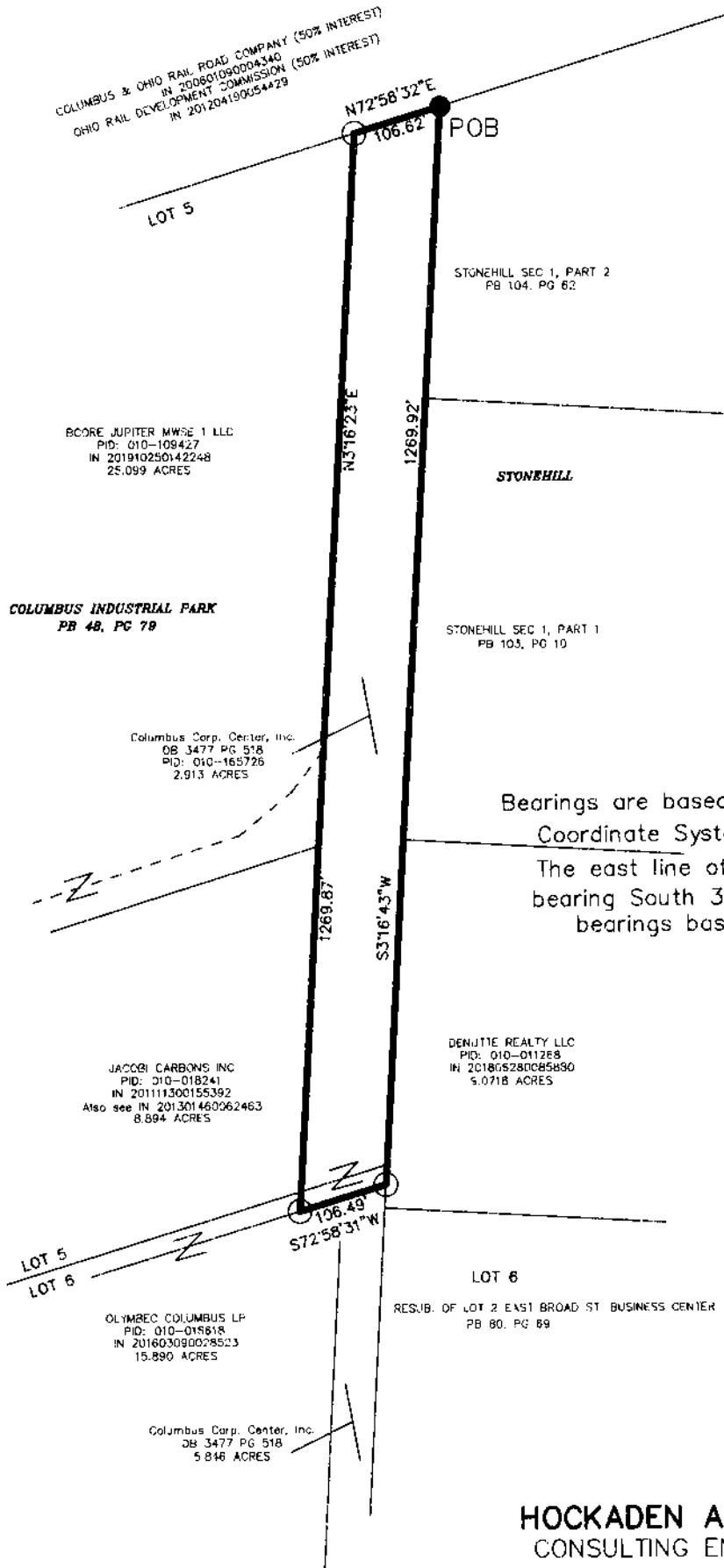




PREPARED BY:  
**HOCKADEN AND ASSOCIATES, INC.**  
 Consulting Engineers & Surveyors  
 883 North Cassady Avenue  
 Columbus, Ohio 43219  
 Telephone: (614) 252-0993  
 Fax: (614) 252-0444

# Boundary Survey

Situated in the State of Ohio, County of Franklin, City of Columbus,  
 being part of Quarter Township 3, T-1, R-16, United States Military Lands,  
 Being part of Lots 5 and 6 of Columbus Industrial Park, P.B. 48, Pg 79

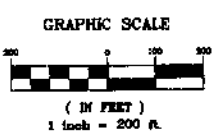


RECEIVED  
 DEC 07 2020  
 Franklin County Public Health  
 Health Department

### LEGEND

- 3/4" ID PIPE FOUND
- 3/4" ID PIPE SET

Bearings are based upon the Ohio State Plane  
 Coordinate System South Zone NAD 1983  
 The east line of Columbus Industrial Park  
 bearing South 3°16'43" West and all other  
 bearings based upon this meridian.




**HOCKADEN AND ASSOCIATES, INC.**  
 CONSULTING ENGINEERS & SURVEYORS

SCALE: 1"=200'

SURVD	DRAWN	CHECKED
SUR. BY	FCL	FCL

DATE: OCT 2020	43088/10.1
REVISED DATES	

By  15 OCT 2020  
 FRANK C. LONG, P.S. No. 6615