

RECEIVED

OCT 29 2020

Franklin County Engineer  
Cecil R. Robertson, P.E., P.S.

**SURVEY EXHIBIT OF PROPOSED 0.275 ACRE TRACT**  
PART OF LAND OF JOHN MCCABE AND ELIZABETH NELSON MCCABE  
CITY OF COLUMBUS, COUNTY OF FRANKLIN, STATE OF OHIO  
QUARTER SECTION 4, TOWNSHIP 2N, RANGE 19W, U.S.M.L.



**OFFICES**

128 East Main Street  
Logan, Ohio 43138  
740-385-2140

1495 Old Henderson Road  
Columbus, Ohio 43220  
614-459-6992

507 Main Street  
Zanesville, Ohio 43701  
740-450-1640



**GRAPHIC SCALE**

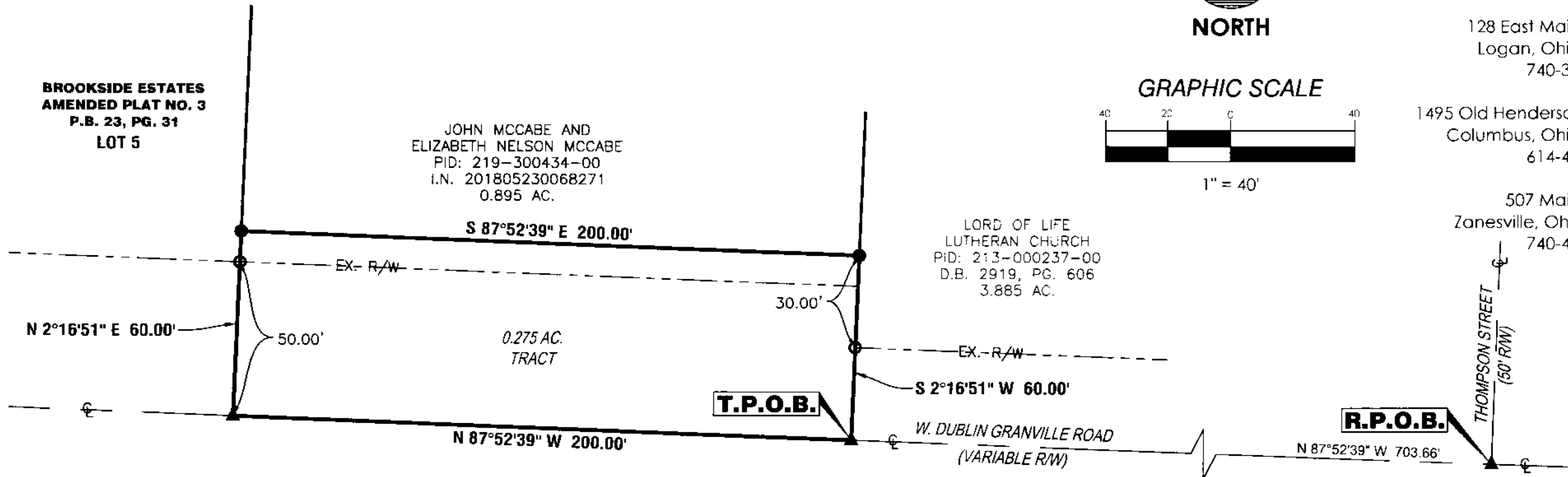


1" = 40'

**BROOKSIDE ESTATES**  
**AMENDED PLAT NO. 3**  
**P.B. 23, PG. 31**  
**LOT 5**

JOHN MCCABE AND  
ELIZABETH NELSON MCCABE  
PID: 219-300434-00  
I.N. 201805230068271  
0.895 AC.

LORD OF LIFE  
LUTHERAN CHURCH  
PID: 213-000237-00  
D.B. 2919, PG. 606  
3.885 AC.

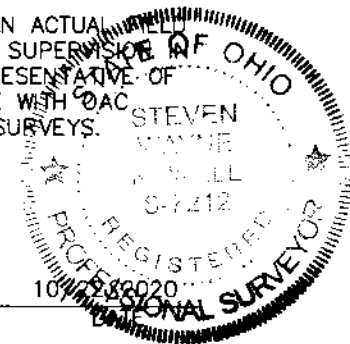


**CERTIFICATION**

THIS DRAWING IS REPRESENTATIVE OF AN ACTUAL SURVEY PERFORMED UNDER MY DIRECT SUPERVISION ON OCTOBER, 2020. THIS DRAWING IS REPRESENTATIVE OF A BOUNDARY SURVEY IN CONFORMANCE WITH OAC 4733-37 STANDARDS FOR BOUNDARY SURVEYS.

SANDS DECKER CPS

STEVEN W. NEWELL  
OHIO PROFESSIONAL  
SURVEYOR 7212



**AREA SUMMARY**

GROSS ACREAGE	TOTAL P.R.O.	NET ACREAGE
0.275 AC.	0.230 AC.	0.045 AC.

**SURVEYOR'S NOTES**

- 1) BASED ON RECORDS ON FILE AT THE FRANKLIN COUNTY RECORDER'S OFFICE AND THE FRANKLIN COUNTY ENGINEER'S OFFICE.
- 2) REFERENCES: DOCUMENTS NOTED HEREON.
- 3) BEARINGS ARE BASED ON THE OHIO STATE PLANE COORDINATE SYSTEM - OHIO SOUTH ZONE (NAD83-NSRS 2007 ADJUSTMENT) BY GPS OBSERVATION, WITH THE CENTERLINE OF W. DUBLIN GRANVILLE ROAD BEING N 87°52'39" W.
- 4) ALL IRON PINS SET ARE 3/4" INSIDE DIAMETER IRON PIPES, 30" IN LENGTH WITH A 1" DIAMETER YELLOW CAP STAMPED "SANDS DECKER."

- 3/4" IRON PIPE FOUND (NO CAP)
- IRON PIN SET
- ▲ MAG NAIL SET