



Evans, Mechwart, Hambleton & Tilton, Inc.
 Engineers • Surveyors • Planners • Scientists
 5500 New Albany Road, Columbus, OH 43054
 Phone: 614.775.4500 Toll Free: 888.775.3648
 emht.com

SURVEY OF ACREAGE PARCEL

HALF SECTION 7, TOWNSHIP 16, RANGE 20

REFUGEE LANDS

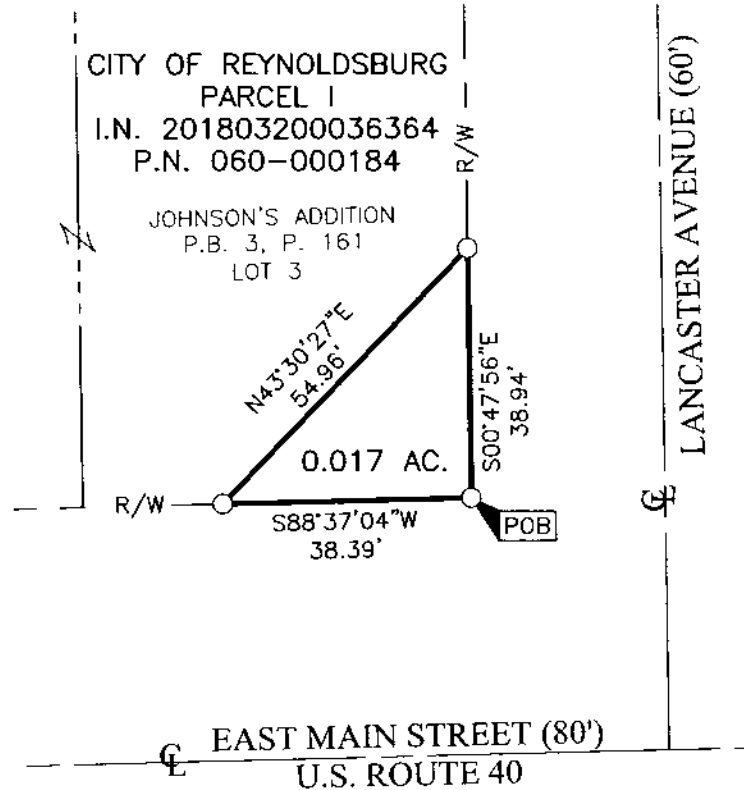
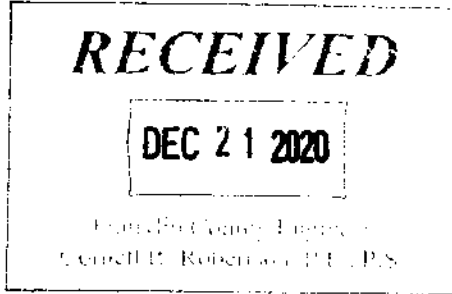
CITY OF REYNOLDSBURG, COUNTY OF FRANKLIN, STATE OF OHIO

Date: December 14, 2020

Scale: 1" = 30'

Job No: 2020-0532

Sheet No: 1 of 1



BASIS OF BEARINGS:

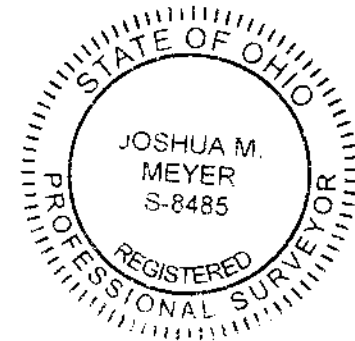
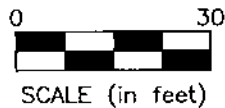
The bearings are based on the Ohio State Plane Coordinate System, South Zone, NAD83 (1986 Adjustment). Control for bearings was from coordinates of monuments REYNOLDSBURG and HOWELL2, having a bearing of North 56°30'34" West, as established by the Franklin County Engineering Department using Global Positioning Systems procedures and equipment.

SURVEY NOTE:

This survey was prepared using documents of record, prior plats of survey, and observed evidence located by an actual field survey in July 2020.

- = STONE FND.
- = MON. FND.
- = I.P. FND.
- = I.P. SET
- = MAG. NAIL FND.
- = MAG. NAIL SET
- ▲ = R.R. SPK. FND.
- = P.K. NAIL FND.

I.P. Set are 13/16" I.D. iron pipes 30" long with cap inscribed EMHT INC.



By *Joshua M. Meyer*
 Joshua M. Meyer
 Professional Surveyor No. 8485
 jmeyer@emht.com

12-14-2020
 Date