



Evans, Mechwart, Hambleton & Tilton, Inc.
 Engineers • Surveyors • Planners • Scientists
 5500 New Albany Road, Columbus, OH 43054
 Phone: 614.775.4500 Toll Free: 888.775.3648

emht.com

SURVEY OF ACREAGE PARCEL

HALF SECTION 7, TOWNSHIP 16, RANGE 20

REFUGEE LANDS

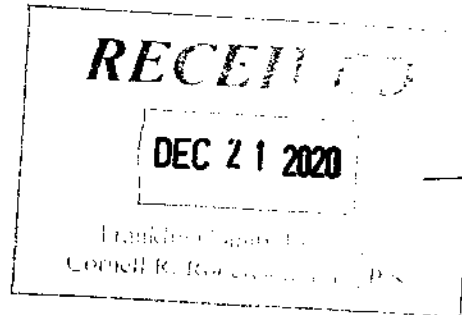
CITY OF REYNOLDSBURG, COUNTY OF FRANKLIN, STATE OF OHIO

Date: December 14, 2020

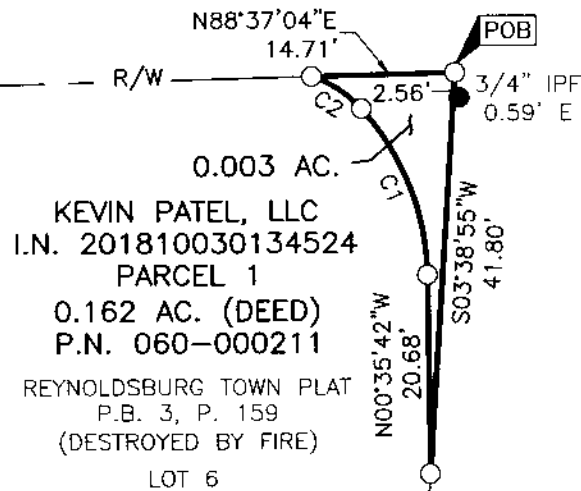
Scale: 1" = 20'

Job No: 2020-0532

Sheet No: 1 of 1



EAST MAIN STREET (80')
 U.S. ROUTE 40



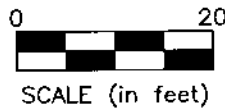
0.003 AC.
 KEVIN PATEL, LLC
 I.N. 201810030134524
 PARCEL 1
 0.162 AC. (DEED)
 P.N. 060-000211

REYNOLDSBURG TOWN PLAT
 P.B. 3, P. 159
 (DESTROYED BY FIRE)
 LOT 6

JACKSON AVENUE (58.5')
 SURVEYOR'S P.B. 3, P. 171

- = STONE FND.
- = MON. FND.
- = I.P. FND.
- = I.P. SET
- = MAG. NAIL FND.
- = MAG. NAIL SET
- ▲ = R.R. SPK. FND.
- = P.K. NAIL FND.

I.P. Set are 13/16" I.D. iron pipes
 30" long with cap inscribed EMHT INC.



BASIS OF BEARINGS:

The bearings are based on the Ohio State Plane Coordinate System, South Zone, NAD83 (1986 Adjustment). Control for bearings was from coordinates of monuments REYNOLDSBURG and HOWELL2, having a bearing of North 56°30'34" West, as established by the Franklin County Engineering Department using Global Positioning Systems procedures and equipment.

SURVEY NOTE:

This survey was prepared using documents of record, prior plats of survey, and observed evidence located by an actual field survey in July 2020.

CURVE TABLE					
CURVE	DELTA	RADIUS	ARC	CH. BEARING	CH. DIST.
C1	41°16'26"	26.37'	19.00'	N21°13'55"W	18.59'
C2	29°27'50"	12.00'	6.17'	N56°36'03"W	6.10'

By *Joshua M. Meyer*
 Joshua M. Meyer
 Professional Surveyor No. 8485
 jmeyer@emht.com

