



Evans, Mechwart, Hambleton & Tilton, Inc.
 Engineers • Surveyors • Planners • Scientists
 5500 New Albany Road, Columbus, OH 43054
 Phone: 614.775.4500 Toll Free: 888.775.3648
 emht.com

SURVEY OF ACREAGE PARCEL

SURVEY NUMBER 1388

VIRGINIA MILITARY DISTRICT

CITY OF GROVE CITY, COUNTY OF FRANKLIN, STATE OF OHIO

Date: September 24, 2020

Scale: 1" = 30'

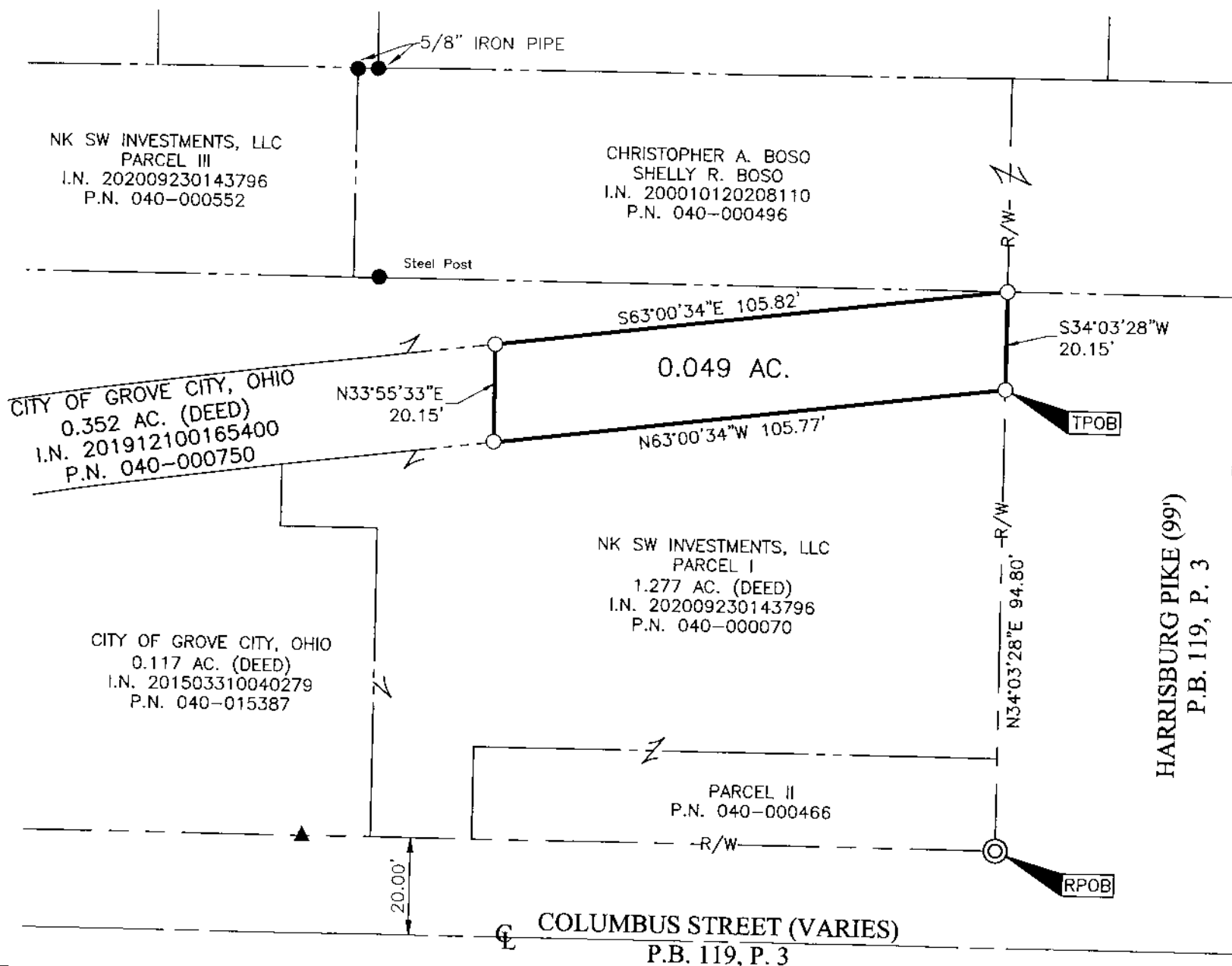
Job No: 2016-0121

BASIS OF BEARINGS:

The bearings shown on this plat are based on the Ohio State Plane Coordinate System, South Zone, NAD83 (CORS96). Said bearings originated from a field traverse which was tied (referenced) to said coordinate system by GPS observations and observations of selected CORS base stations in the National Spatial Reference System. The portion of the southerly right-of-way line of Mill Street, having a bearing of South 55° 51' 52" East, is designated the "basis of bearing" for this survey.

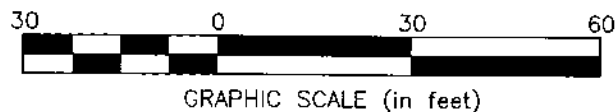
SURVEY NOTE:

This survey was prepared using documents of record, prior plats of survey, and observed evidence located by an actual field survey in May 2002, June 2010, October 2013, October 2014 and November 2016.



- = STONE FND.
- = MON. FND.
- = I.P. FND.
- = I.P. SET
- = MAG. NAIL FND.
- = MAG. NAIL SET
- ▲ = R.R. SPK. FND.
- = P.K. NAIL FND.
- ⊙ = PERM. MRKR. SET

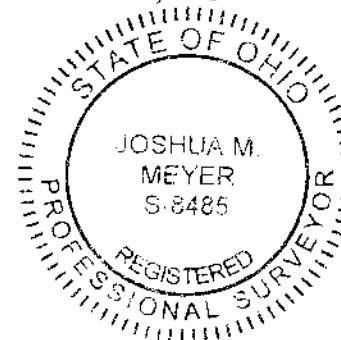
I.P. Set are 13/16" I.D. iron pipes 30" long with cap stamped EMHT INC. Permanent Markers set are one-inch solid iron pins with aluminum cap stamped EMHT INC.



RECEIVED

OCT 07 2020

Franklin County Engineer
 Corbett R. Roberson, P.E., P.S.



By *Joshua M. Meyer*
 Joshua M. Meyer
 Professional Surveyor No. 8485

9-24-2020
 Date

J:\20160121\DWG\04SHEETS\BOUNDARY\20160121-VS-BNDY-22.DWG plotted by GEIGER, STEVEN on 9/24/2020 12:49:32 PM last saved by SCEIGER on 9/24/2020 12:49:22 PM