



Evans, Mechwart, Hambleton & Tilton, Inc.
 Engineers • Surveyors • Planners • Scientists
 5500 New Albany Road, Columbus, OH 43054
 Phone: 614.775.4500 Toll Free: 888.775.3648
 emht.com

SURVEY OF ACREAGE PARCEL

SURVEY NUMBER 6840

VIRGINIA MILITARY DISTRICT

CITY OF GROVE CITY, COUNTY OF FRANKLIN, STATE OF OHIO

Date:	November 19, 2018
Scale:	1" = 80'
Job No:	2017-1174
Sheet No:	1 of 1

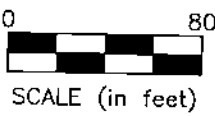
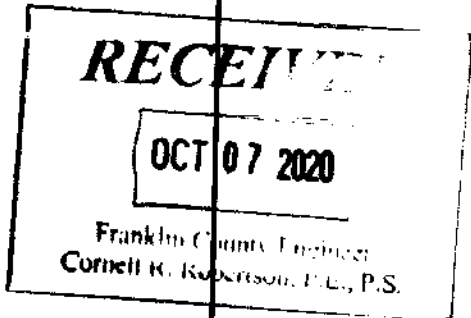
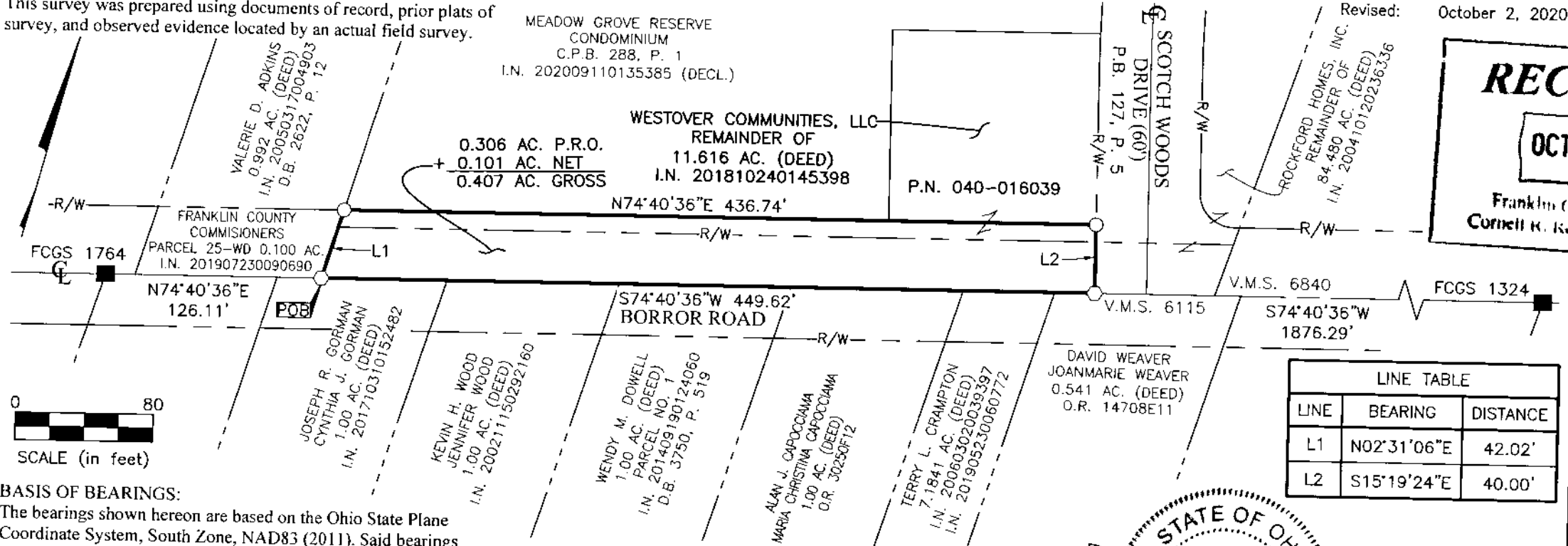
SURVEY NOTE:

This survey was prepared using documents of record, prior plats of survey, and observed evidence located by an actual field survey.

MEADOW GROVE RESERVE
 CONDOMINIUM
 C.P.B. 288, P. 1
 I.N. 202009110135385 (DECL.)

WESTOVER COMMUNITIES, LLC
 REMAINDER OF
 11.616 AC. (DEED)
 I.N. 201810240145398
 P.N. 040-016039

Revised: October 2, 2020



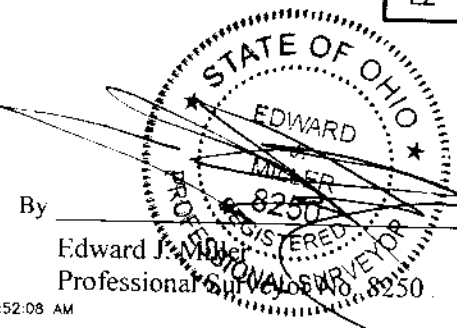
LINE TABLE		
LINE	BEARING	DISTANCE
L1	N02°31'06"E	42.02'
L2	S15°19'24"E	40.00'

BASIS OF BEARINGS:

The bearings shown hereon are based on the Ohio State Plane Coordinate System, South Zone, NAD83 (2011). Said bearings originated from a field traverse which was tied (referenced) to said coordinate system by GPS observations and observations of selected CORS base stations in the National Spatial Reference System. The portion of the centerline of Borrer Road, also being the common line of Virginia Military Survey Numbers 6115 and 6840, having a bearing of North 74° 40' 36" East, is designated as the "basis of bearings" for this plat.

- = MON. FND.
- = I.P. SET
- = MAG. NAIL SET

I.P. Set are 13/16" I.D. iron pipes 30" long with cap inscribed EMHT INC.



By Edward J. Meier Date 11/19/20
 Professional Surveyor