



Evans, Mechwart, Hambleton & Tilton, Inc.  
 Engineers • Surveyors • Planners • Scientists  
 5500 New Albany Road, Columbus, OH 43054  
 Phone: 614.775.4500 Toll Free: 888.775.3648

emht.com

# SURVEY OF ACREAGE PARCEL

SURVEY NUMBER 6840

VIRGINIA MILITARY DISTRICT

CITY OF GROVE CITY, COUNTY OF FRANKLIN, STATE OF OHIO

Date: November 19, 2018

Scale: 1" = 80'

Job No: 2017-1174

Sheet No: 1 of 1

Revised: October 2, 2020

### BASIS OF BEARINGS:

The bearings shown hereon are based on the Ohio State Plane Coordinate System, South Zone, NAD83 (2011). Said bearings originated from a field traverse which was tied (referenced) to said coordinate system by GPS observations and observations of selected CORS base stations in the National Spatial Reference System. The portion of the centerline of Borror Road, also being the common line of Virginia Military Survey Numbers 6115 and 6840, having a bearing of North 74° 40' 36" East, is designated as the "basis of bearings" for this plat.

### SURVEY NOTE:

This survey was prepared using documents of record, prior plats of survey, and observed evidence located by an actual field survey.

■ = MON. FND.

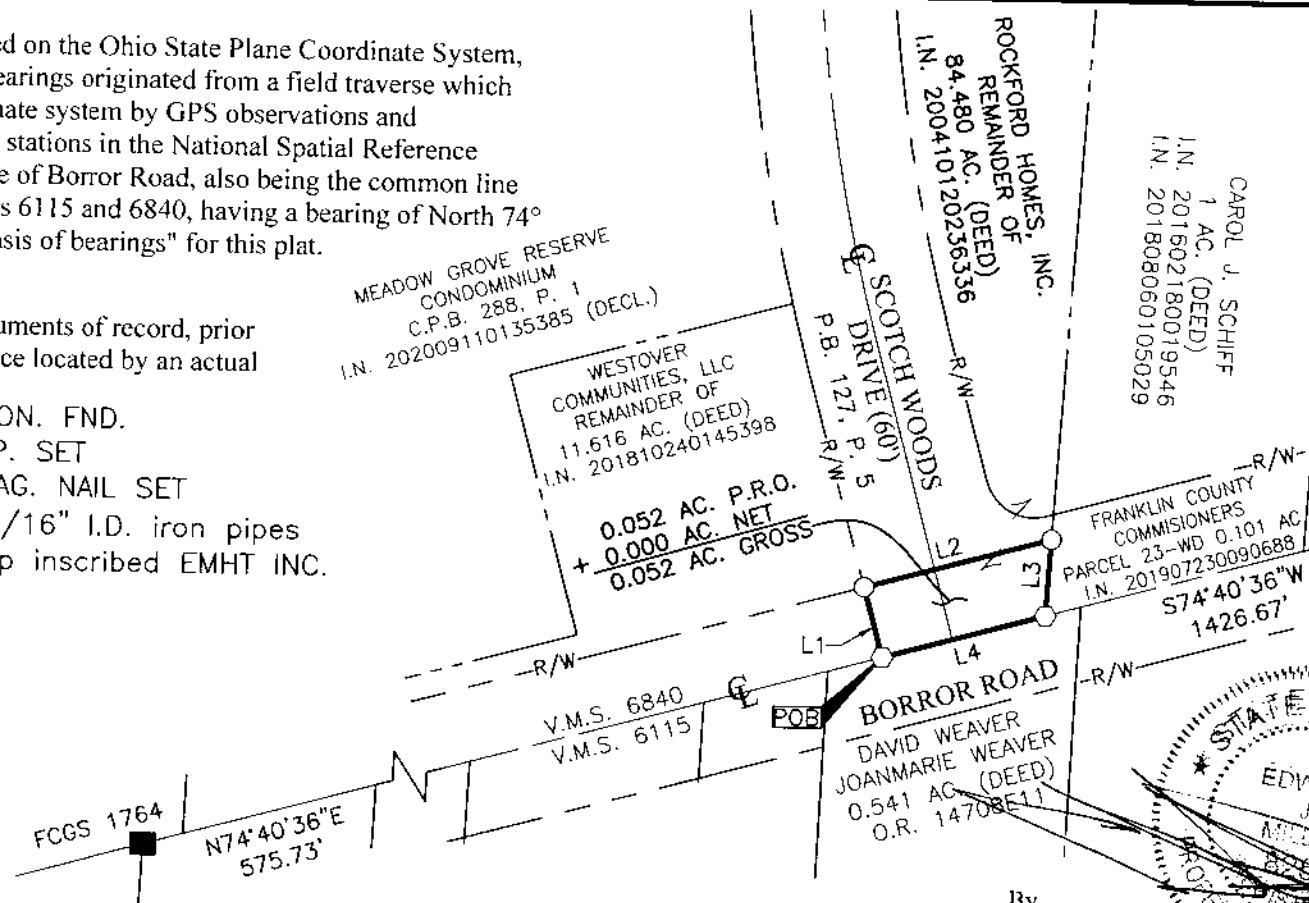
○ = I.P. SET

○ = MAG. NAIL SET

I.P. Set are 13/16" I.D. iron pipes  
 30" long with cap inscribed EMHT INC.



SCALE (in feet)

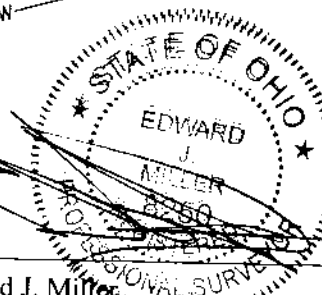


LINE TABLE		
LINE	BEARING	DISTANCE
L1	N15°19'24"W	30.00'
L2	N74°40'36"E	80.10'
L3	S03°35'36"W	31.71'
L4	S74°40'36"W	69.82'

RECEIVED

OCT 07 2020

Franklin County Surveyor's Office  
 Computer Aided Drafting & P.S.



By Edward J. Miller Date 10/5/2020  
 Professional Surveyor No. 8250