

PLAT OF SURVEY

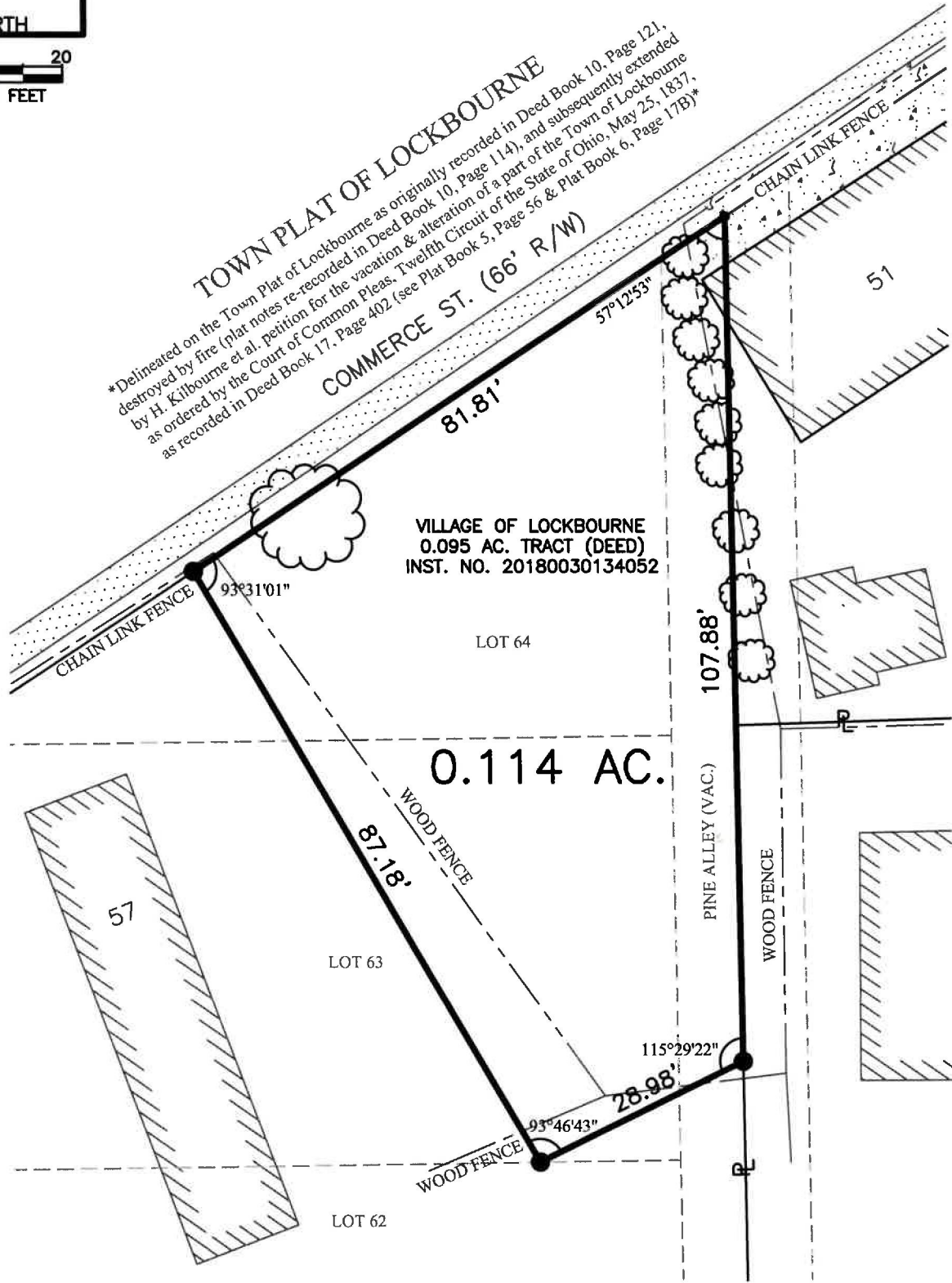
SITUATE IN THE STATE OF OHIO, COUNTY OF FRANKLIN, VILLAGE OF LOCKBOURNE
BEING A 0.095 AC. TRACT TO THE VILLAGE OF LOCKBOURNE



GRID NORTH



TOWN PLAT OF LOCKBOURNE
Delineated on the Town Plat of Lockbourne as originally recorded in Deed Book 10, Page 121, destroyed by fire (plat notes re-recorded in Deed Book 10, Page 114), and subsequently extended by H. Kilbourne et al. petition for the vacation & alteration of a part of the Town of Lockbourne as ordered by the Court of Common Pleas, Twelfth Circuit of the State of Ohio, May 25, 1837, as recorded in Deed Book 17, Page 402 (see Plat Book 5, Page 56 & Plat Book 6, Page 178)



LEGEND

- 5/8" REBAR SET ("FRANKLIN COUNTY ENGINEER" CAP)
- DRILL HOLE SET
- ▨ - SIDEWALK
- ▩ - CONCRETE



PLAT PREPARED BY:
FRANKLIN COUNTY ENGINEER'S OFFICE
970 DUBLIN RD.
COLUMBUS, OHIO 43215
PHONE: 614.525.3030
FAX: 614.525.3062

THE SPECIFIED PLAT INTENTION IS FOR THE LOCATION OF ALL EXISTING FEATURES ON
AFOREMENTIONED PROPERTY WITH A DISTANCE RELATION TO SAID FEATURES

THIS PLAT WAS PREPARED BY THE FRANKLIN COUNTY ENGINEER'S OFFICE, JACKSON D. BRANDEL, OHIO REGISTERED SURVEYOR NO. 8215, FROM AN ACTUAL FIELD SURVEY OF THE PREMISES PERFORMED BY THE FRANKLIN COUNTY ENGINEER'S SURVEY DEPARTMENT IN SEPTEMBER 2020, ALONG WITH PUBLIC RECORDS ON FILE AT THE FRANKLIN COUNTY RECORDER'S OFFICE & FRANKLIN COUNTY ENGINEER'S OFFICE.



J. D. Brandel
JACKSON D. BRANDEL
OHIO REGISTERED SURVEYOR NO. 8215

9.15.20
DATE

DRAWING: 55 COMMERCE
DATE: 9.15.20