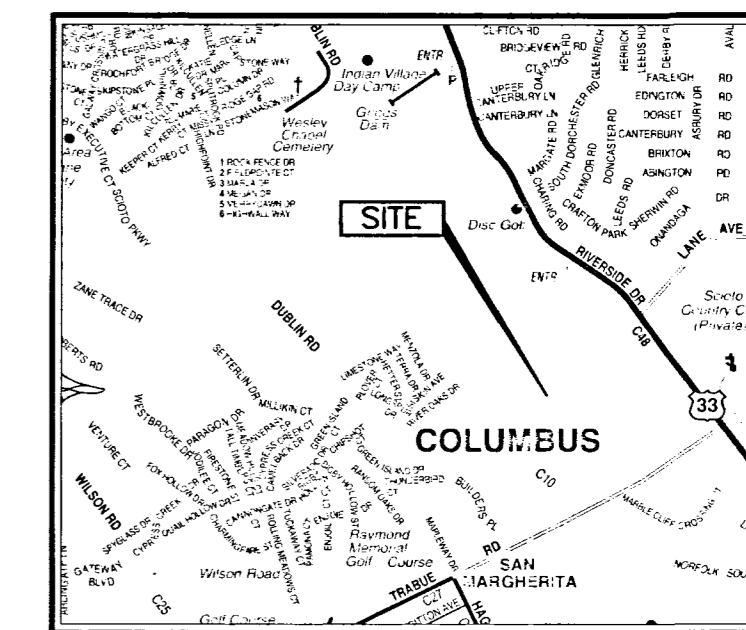
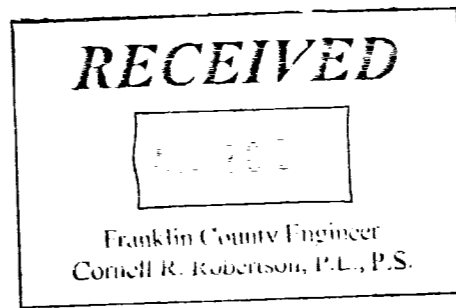
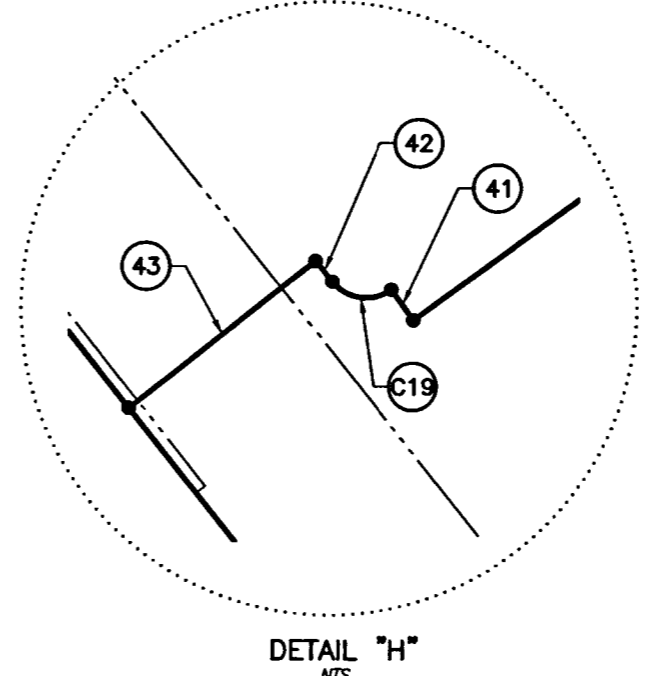
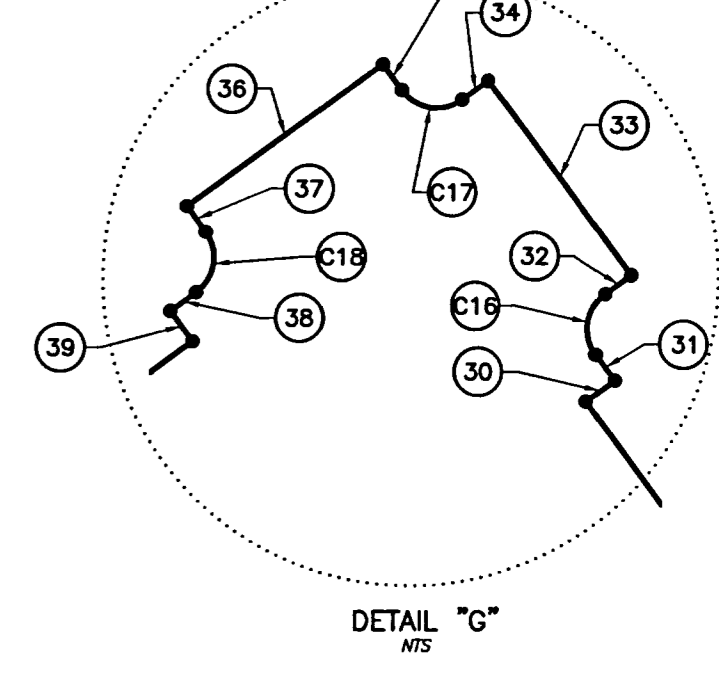
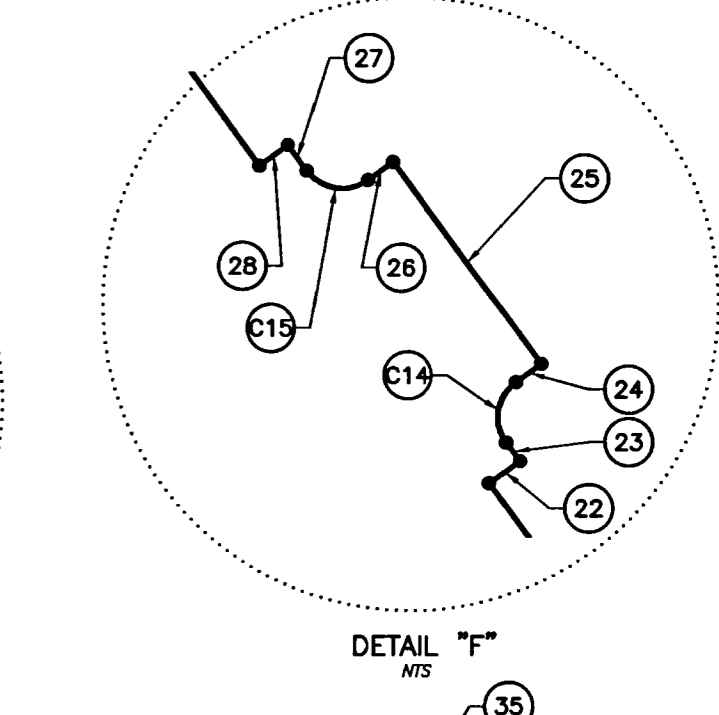
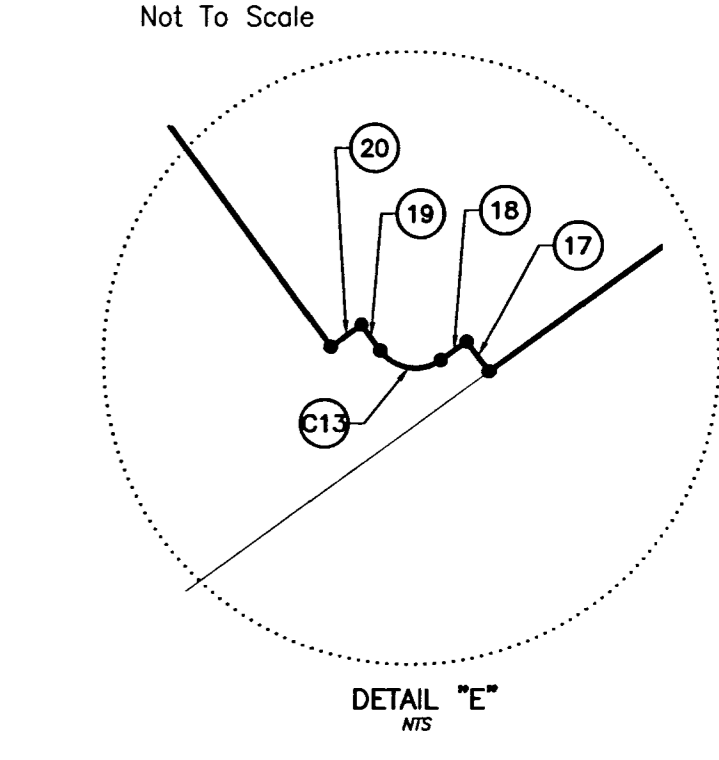
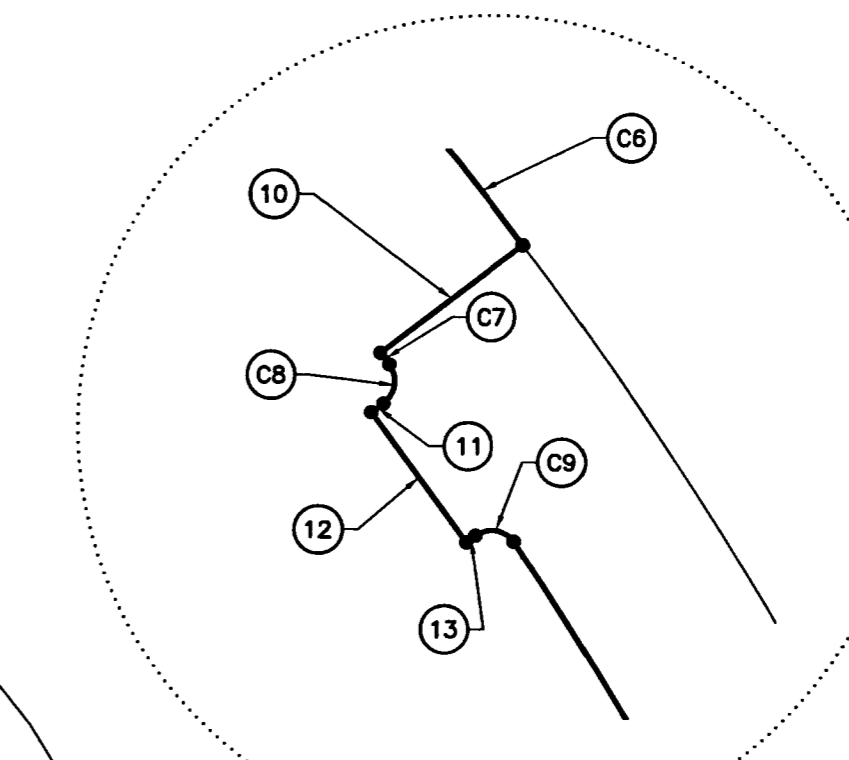
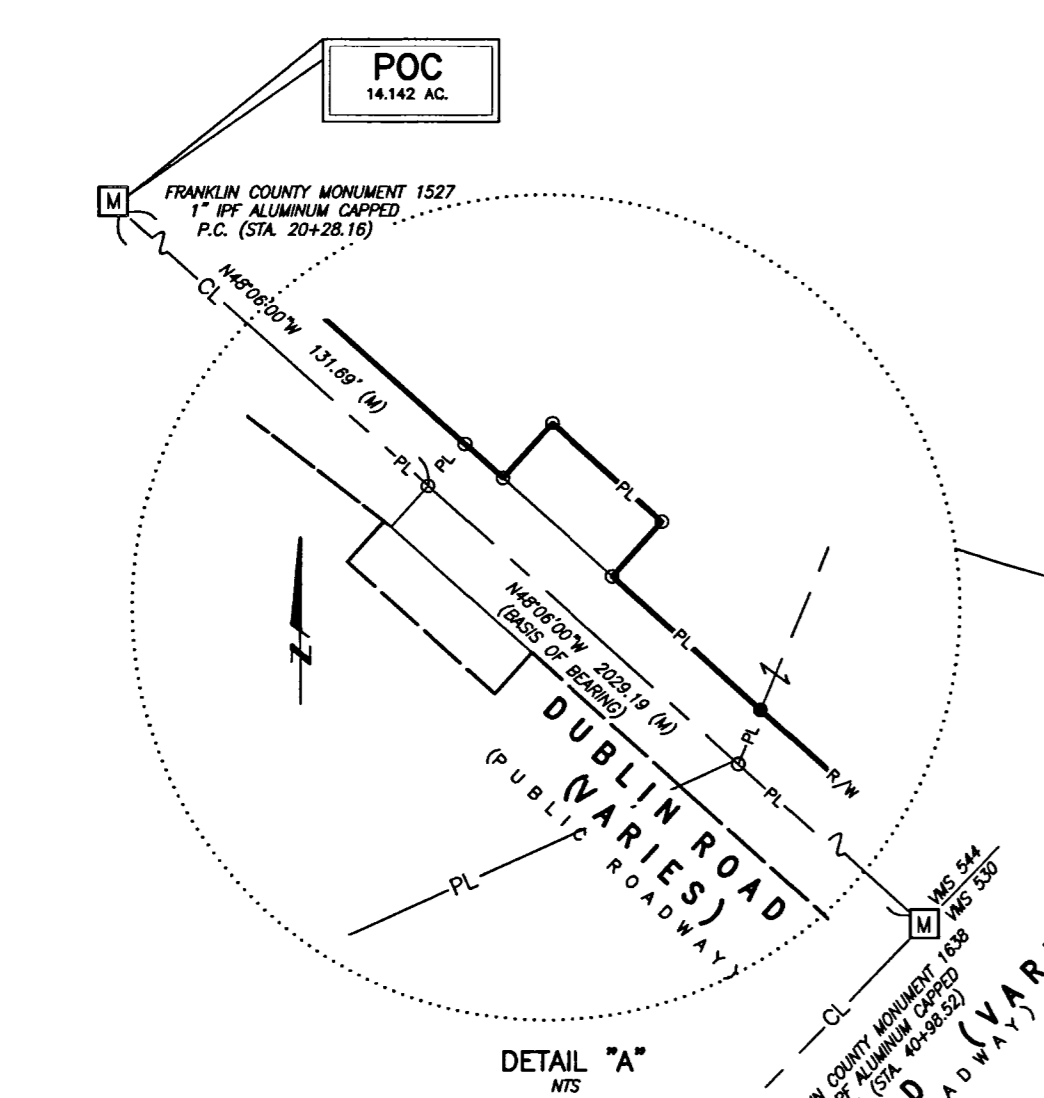
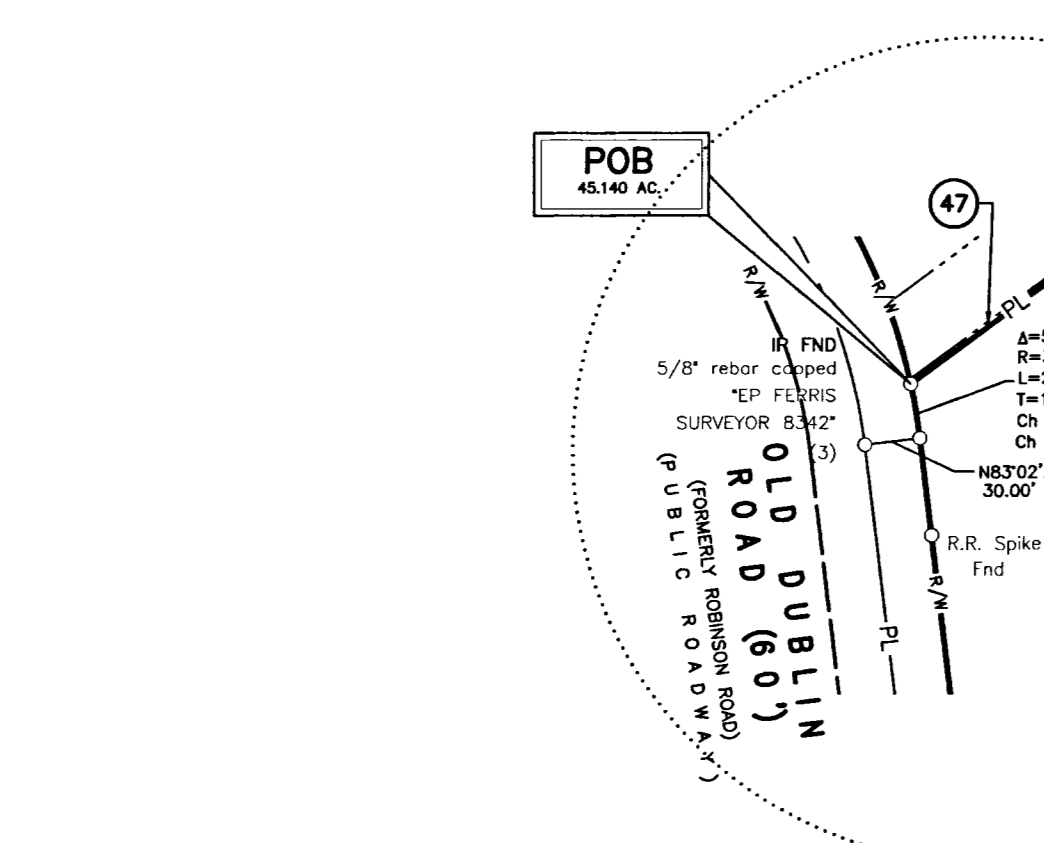
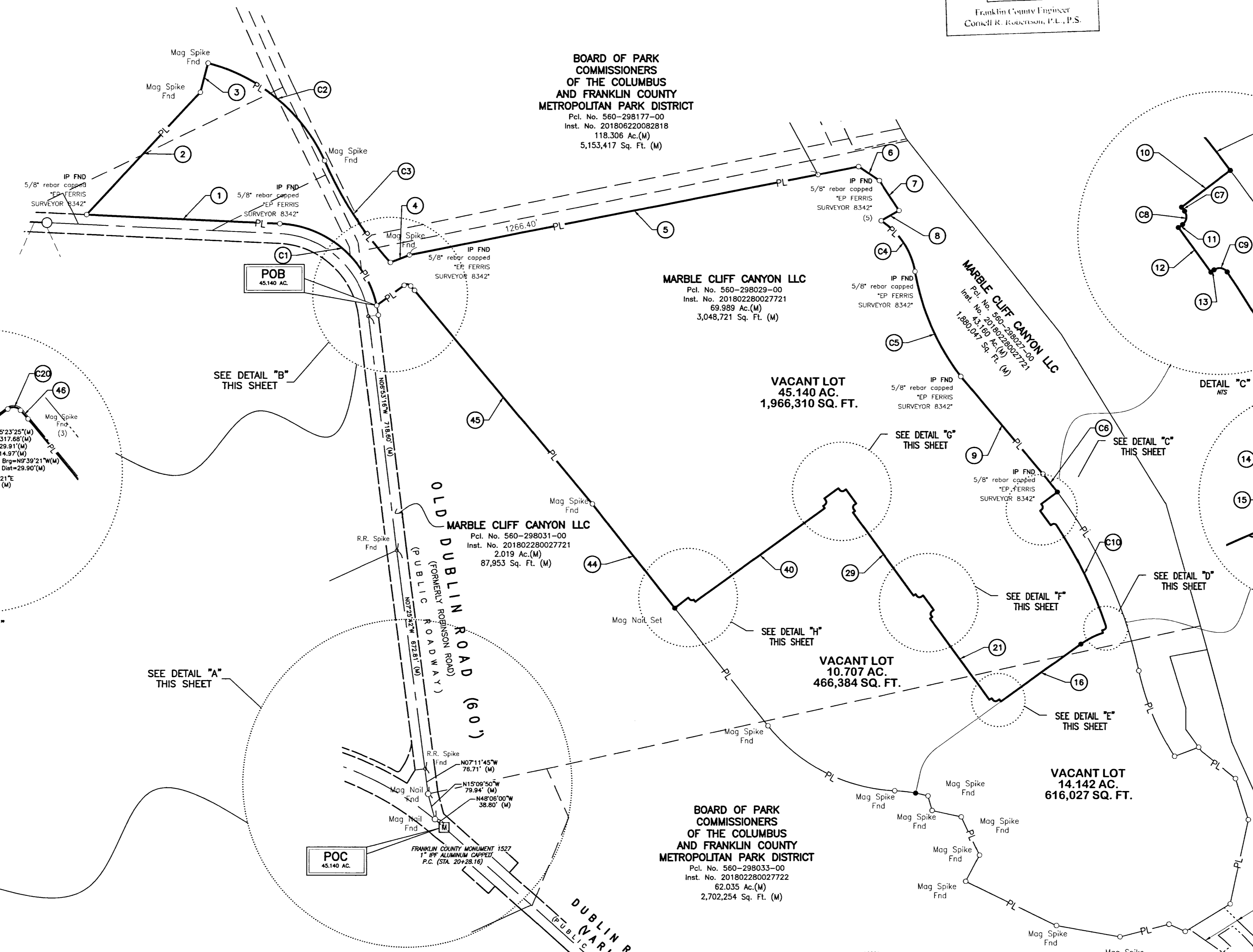


BOUNDARY SURVEY 45.140 AC. CITY OF COLUMBUS, COUNTY OF FRANKLIN, OHIO Virginia Military Survey No. 544

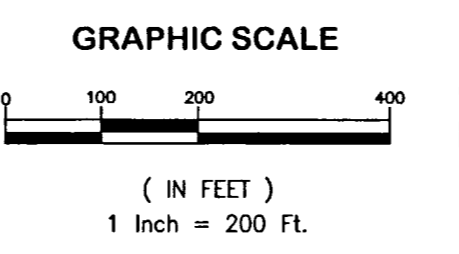


LINE	LENGTH	BEARING
1	589.52'	N87°18'38"W
2	509.34'	N42°56'22"E
3	92.08'	N14°46'05"E
4	62.95'	N68°39'31"E
5	1392.33'	N78°41'33"E
6	75.90'	S55°48'56"E
7	109.48'	S33°35'42"E
8	63.37'	S60°13'18"W
9	388.60'	S39°54'20"E
10	61.00'	S52°59'29"W
11	5.00'	S53°56'51"W
12	55.00'	S36°03'09"E
13	3.86'	N53°56'51"E
14	5.56'	S72°55'22"W
15	8.28'	S17°04'38"E
16	299.57'	S53°56'51"W
17	8.25'	N36°03'09"W
18	7.00'	S53°56'51"W
19	7.05'	N36°03'09"W
20	8.25'	S53°56'51"W
21	306.95'	N36°03'09"W
22	8.25'	N53°56'51"E
23	5.00'	N36°03'09"W
24	6.83'	N53°56'51"E
25	55.00'	N36°03'09"W
26	6.83'	S53°56'51"W
27	7.00'	N36°03'09"W
28	7.75'	S53°56'51"W
29	313.00'	N36°03'09"W
30	7.75'	N53°56'51"E
31	7.00'	N36°03'09"W
32	7.00'	N53°56'51"E
33	53.00'	N36°03'09"W
34	7.00'	S53°56'51"W
35	7.00'	N36°03'09"W
36	53.00'	S53°56'51"W
37	7.00'	S36°03'09"E
38	7.00'	S53°57'08"W
39	8.25'	S36°03'09"E
40	487.36'	S53°56'51"W
41	8.25'	N36°03'09"W
42	5.77'	N38°22'59"W
43	52.02'	S51°37'01"W
44	404.02'	N38°22'59"W
45	846.43'	N39°40'37"W
46	17.98'	N41°28'43"W
47	104.06'	S53°34'16"W

NO.	LENGTH	RADIUS	DELTA	CHORD	CHORD BEARING
C1	416.07'	317.67'	075°02'31"	386.96'	N49°48'45"W
C2	479.05'	540.61'	050°46'18"	463.53'	S50°03'27"E
C3	370.92'	1142.05'	018°36'32"	369.29'	S32°50'50"E
C4	192.06'	230.00'	047°50'36"	188.52'	S33°43'42"E
C5	352.24'	732.83'	027°32'24"	348.86'	S23°34'36"E
C6	69.81'	1380.00'	002°53'54"	69.80'	S38°28'25"E
C7	4.99'	1319.00'	000°13'00"	4.99'	S36°54'01"E
C8	15.05'	9.50'	090°44'21"	13.52'	S08°34'40"W
C9	14.86'	9.52'	089°26'07"	13.40'	S81°16'50"E
C10	342.50'	1319.00'	014°52'40"	341.54'	S28°08'07"E
C11	15.19'	9.50'	091°37'09"	13.62'	S27°06'48"W
C12	75.43'	239.25'	018°03'49"	75.12'	S62°58'45"W
C13	14.92'	9.50'	090°00'00"	13.44'	N81°03'09"W
C14	14.92'	9.50'	090°00'00"	13.44'	N08°56'51"E
C15	14.92'	9.50'	090°00'00"	13.44'	N81°03'09"W
C16	14.92'	9.50'	090°00'00"	13.44'	N08°56'51"E
C17	14.92'	9.50'	090°00'00"	13.44'	N81°03'09"W
C18	14.92'	9.50'	090°00'17"	13.44'	S08°56'59"W
C19	14.52'	9.50'	087°33'45"	13.15'	N82°09'51"W
C20	22.24'	15.00'	084°57'00"	20.26'	N83°57'13"W



- LEGEND**
- PL Property Line
 - R/W Right-of-Way
 - Mag Nail set (if denoted) or Iron Pin Set
 - Iron Pin Found (IPF) Mag Spike found (if denoted)
 - (D) Deed or Plat
 - (M) Measured Distance
 - POC Point of Commencement
 - POB Point of Beginning
 - M Franklin County Monument



BASIS OF BEARING

The bearings shown on this plot are based on the Ohio State Plane Coordinate System, South Zone, NAD83 (2011A). Control for bearings was from coordinates of monuments FCGS 1638 and FCGS 1527, as established by the Franklin County Engineering Department, using Global Positioning System procedures and equipment, with a bearing of **N48°06'00"W** for a portion of the centerline of Dublin Road and is designated the "Basis of Bearing" for this plot.

Iron pins set are 5/8" rebar, 30" in length with a yellow plastic cap with "EP FERRIS SURVEYOR 8342" inscribed on top.

Mag spikes set are set in solid rock and are 3" long, 3/8" shaft diameter magnetic spikes with a 1" diameter head with a 2" diameter brass washer with "EP FERRIS SURVEYOR 8342" inscribed on top.

Field survey was conducted from 11-01-16 to 11-14-17.

CERTIFICATION

We hereby certify that the foregoing Boundary Survey was prepared from actual field measurements in accordance with Chapter 4733-37 Ohio Administrative Code.

By: *Matthew Lee Sloat* 8/26/20
 Matthew Lee Sloat, P.E., P.S.
 Registered Surveyor No. 8342
 DRWN BY CRK CHK BY MLS DATE 08-19-2020

E. P. FERRIS
 AND ASSOCIATES
 INC.
 Consulting Civil Engineers and Surveyors

880 KING AVENUE
 COLUMBUS, OHIO 43212
 (614) 299-2999
 (614) 299-2992 (Fax)
 www.EPFERRIS.com