

I-2-B

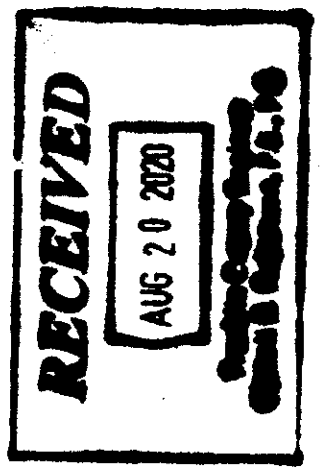
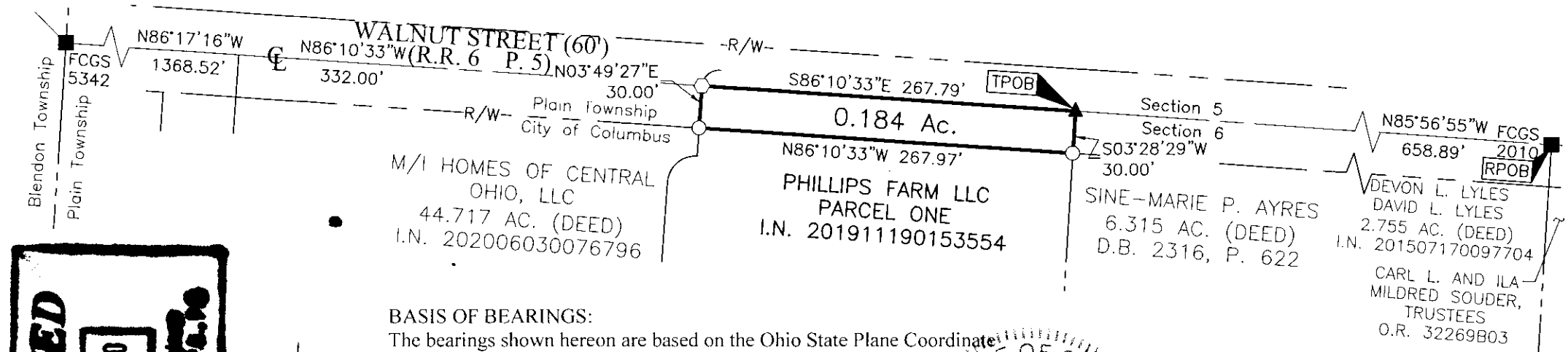


Evans, Mechwart, Hambleton & Tilton, Inc.
Engineers • Surveyors • Planners • Scientists
5500 New Albany Road, Columbus, OH 43054
Phone: 614.775.4500 Toll Free: 888.775.3648
emht.com

SURVEY OF ACREAGE PARCEL

SECTION 6, QUARTER TOWNSHIP 2, TOWNSHIP 2, RANGE 16 UNITED STATES MILITARY DISTRICT TOWNSHIP OF PLAIN, COUNTY OF FRANKLIN, STATE OF OHIO

Date:	August 11, 2020
Scale:	1" = 100'
Job No:	2019-1346

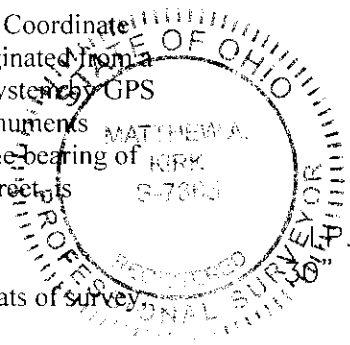


BASIS OF BEARINGS:

The bearings shown hereon are based on the Ohio State Plane Coordinate System, South Zone, NAD83 (NSRS2007). Said bearings originated from a field traverse which was tied (referenced) to said coordinate system by GPS observations of Franklin County Engineering Department monuments FCGS 8825 RESET, FCGS 5212 RESET, and D5 RESET. The bearing of South 86° 10'33" East, assigned to the centerline of Walnut Street, is designated the basis of bearing for this survey.

SURVEY NOTE:

This survey was prepared using documents of record, prior plats of survey, and observed evidence located by an actual field survey.



- = MON. FND.
 - = I.P. SET
 - ◊ = MAG. NAIL SET
 - ▲ = R.R. SPK. FND.
- Set are 13/16" I.D. iron pipes 36" long with cap stamped EMHT INC.



GRAPHIC SCALE (in feet)

By Matthew A. Kirk Date 11 Aug 20
Matthew A. Kirk
Professional Surveyor No. 7865