

T-2-B

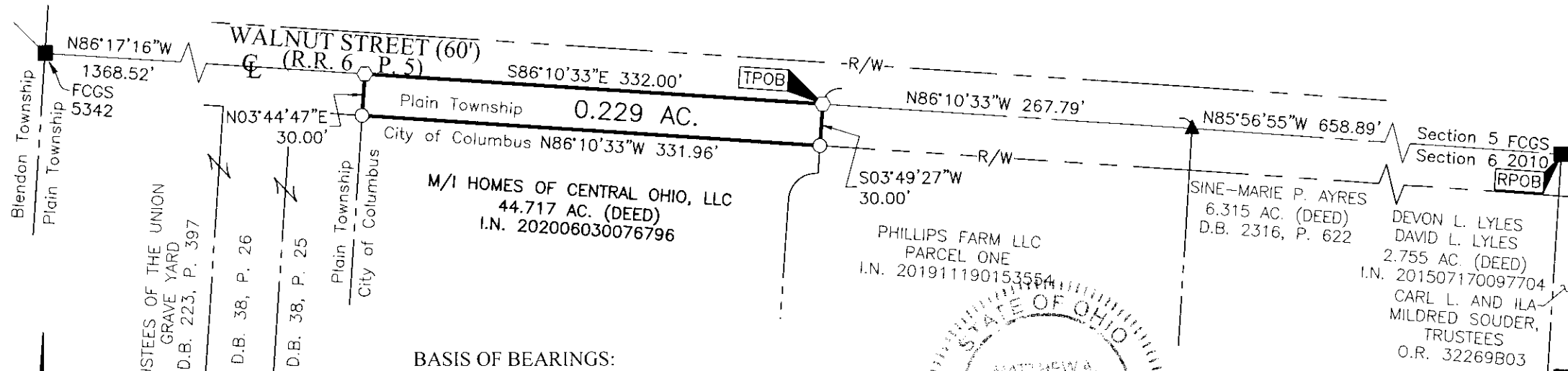


Evans, Mechwart, Hambleton & Tilton, Inc.  
Engineers • Surveyors • Planners • Scientists  
5500 New Albany Road, Columbus, OH 43054  
Phone: 614.775.4500 Toll Free: 888.775.3648  
emht.com

# SURVEY OF ACREAGE PARCEL

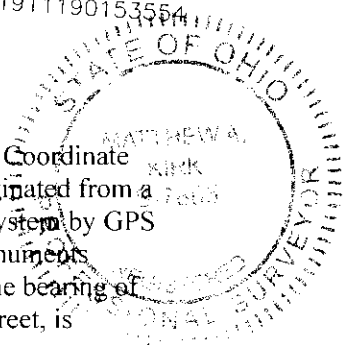
SECTION 6, QUARTER TOWNSHIP 2, TOWNSHIP 2, RANGE 16  
UNITED STATES MILITARY DISTRICT  
TOWNSHIP OF PLAIN, COUNTY OF FRANKLIN, STATE OF OHIO

Date:	August 11, 2020
Scale:	1" = 100'
Job No:	2019-1346



**BASIS OF BEARINGS:**  
The bearings shown hereon are based on the Ohio State Plane Coordinate System, South Zone, NAD83 (NSRS2007). Said bearings originated from a field traverse which was tied (referenced) to said coordinate system by GPS observations of Franklin County Engineering Department monuments FC GS 8825 RESET, FC GS 5212 RESET, and D5 RESET. The bearing of South 86° 10'33" East, assigned to the centerline of Walnut Street, is designated the basis of bearing for this survey.

**SURVEY NOTE:**  
This survey was prepared using documents of record, prior plats of survey, and observed evidence located by an actual field survey.



- = MON. FND.
- = I.P. SET
- ◊ = MAG. NAIL SET
- ▲ = R.R. SPK. FND.

I.P. Set are 13/16" I.D. iron pipes 30" long with cap stamped EMHT INC.



GRAPHIC SCALE (in feet)

By Matthew A. Kirk Date 11 AUG 20  
Matthew A. Kirk  
Professional Surveyor No. 7865

