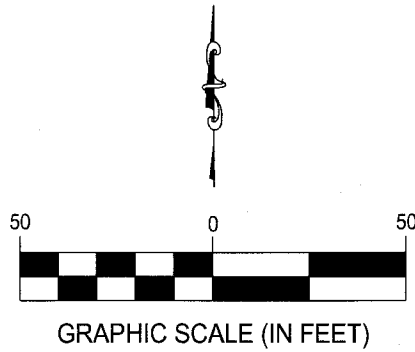
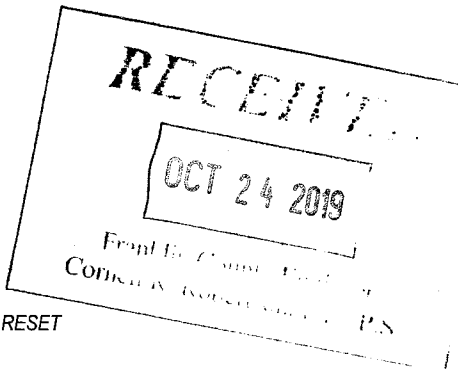
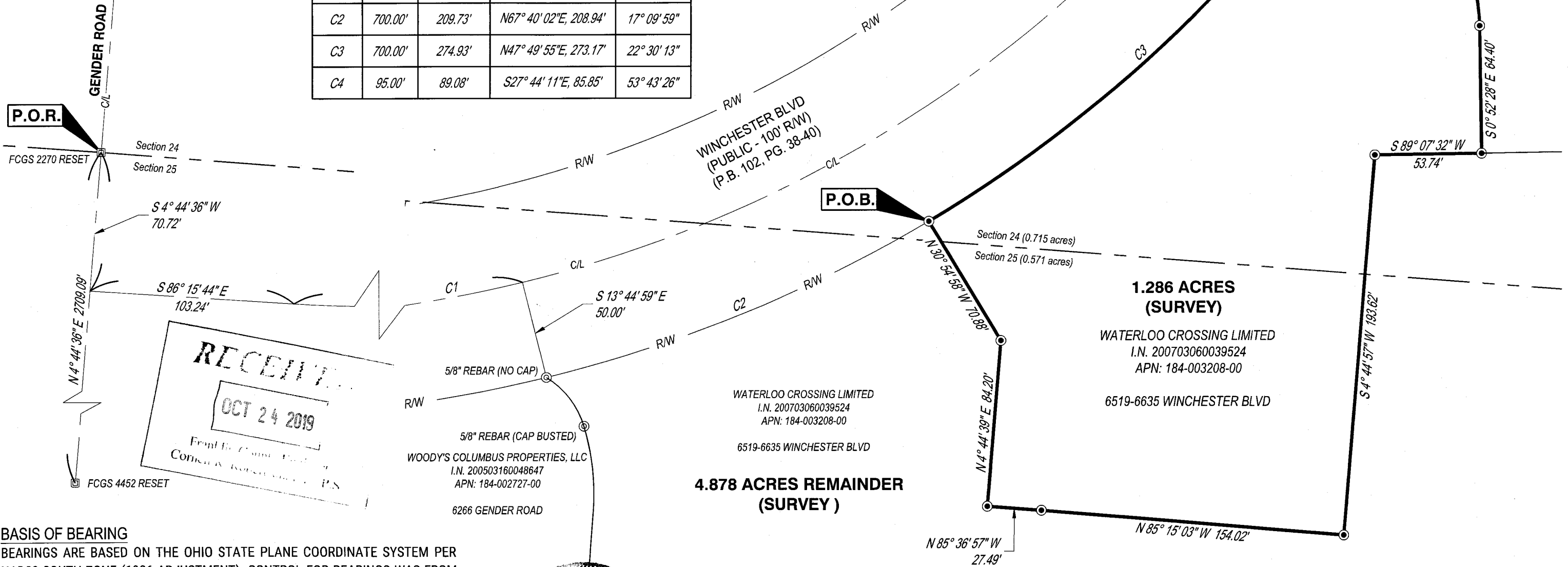


1.286 LOT SPLIT

STATE OF OHIO, COUNTY OF FRANKLIN, CITY OF CANAL WINCHESTER
SECTION 24 & 25, TOWNSHIP 11, RANGE 21, CONGRESS LANDS



Curve table				
Curve	Radius	Arc Length	Chord	Delta Angle
C1	650.00'	198.39'	N84° 59' 39"E, 197.62'	17° 29' 15"
C2	700.00'	209.73'	N67° 40' 02"E, 208.94'	17° 09' 59"
C3	700.00'	274.93'	N47° 49' 55"E, 273.17'	22° 30' 13"
C4	95.00'	89.08'	S27° 44' 11"E, 85.85'	53° 43' 26"



MONUMENT LEGEND

- 5/8"x30" REBAR W/ YELLOW CAP STAMPED "CESO" SET
- △ MAG NAIL SET
- ⊙ REBAR FOUND
- MONUMENT FOUND

BASIS OF BEARING
BEARINGS ARE BASED ON THE OHIO STATE PLANE COORDINATE SYSTEM PER NAD83 SOUTH ZONE (1986 ADJUSTMENT). CONTROL FOR BEARINGS WAS FROM COORDINATES OF MONUMENTS FCGS 2270 (RESET) & FCGS 4452, HAVING A BEARING OF NORTH 04° 44' 36" EAST, AS ESTABLISHED BY THE FRANKLIN COUNTY ENGINEERING DEPARTMENT.

Anthony Williams
ANTHONY WILLIAMS, OHIO PS NO 7726
tony.williams@cesoinc.com

10/22/2019
DATE

1.286 ACRE LOT SPLIT	
CITY OF CANAL WINCHESTER	FRANKLIN COUNTY, OHIO
SCALE: 1"=50'	DATE: 10/17/2019
DESIGN: N/A	JOB NO.: 756756
DRAWN: ALB	SHEET NO.:
CHECKED: JAM	CESO WWW.CESOINC.COM
	1 OF 1