

**SURVEY EXHIBIT OF PROPOSED
0.040 ACRE RIGHT OF WAY DROP
PART OF LAND OF OPRS COMMUNITIES
CITY OF COLUMBUS, COUNTY OF FRANKLIN, STATE OF OHIO
LOT 1 OF A RESUBDIVISION OF WESTMINSTER THURBER AND
VACATION OF PART OF THURBER DRIVE EAST**

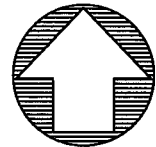
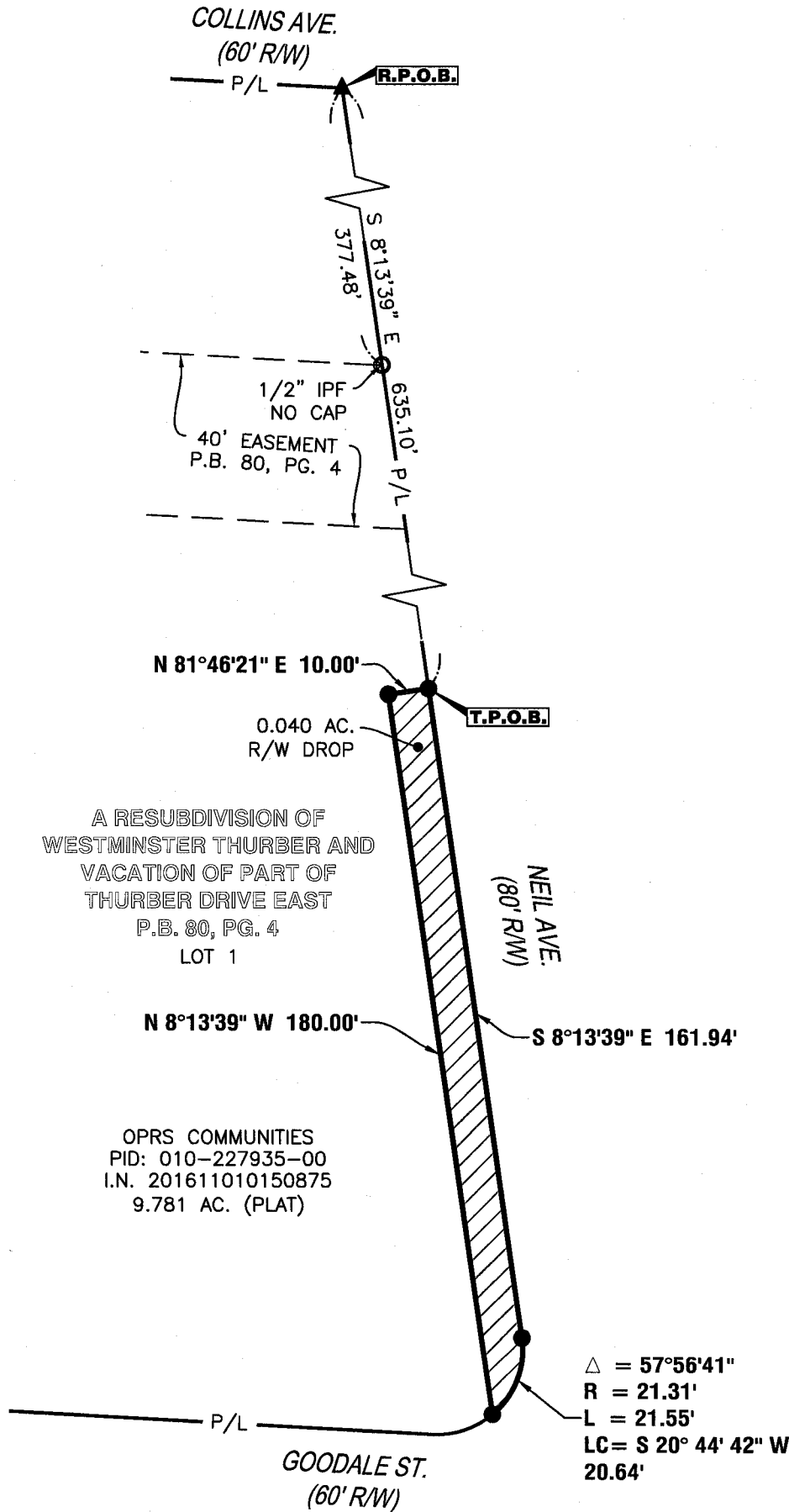


OFFICES

128 East Main Street
Logan, Ohio 43138
740-385-2140

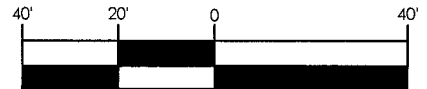
1495 Old Henderson Road
Columbus, Ohio 43220
614-459-6992

507 Main Street
Zanesville, Ohio 43701
740-450-1640



NORTH

GRAPHIC SCALE



1" = 40'

A RESUBDIVISION OF
WESTMINSTER THURBER AND
VACATION OF PART OF
THURBER DRIVE EAST
P.B. 80, PG. 4
LOT 1

OPRS COMMUNITIES
PID: 010-227935-00
I.N. 201611010150875
9.781 AC. (PLAT)

SURVEYOR'S NOTES

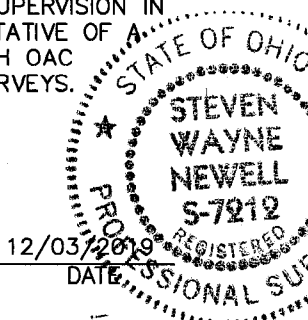
- 1) BASED ON RECORDS ON FILE AT THE FRANKLIN COUNTY RECORDER'S OFFICE AND THE FRANKLIN COUNTY ENGINEER'S OFFICE.
- 2) REFERENCES: DOCUMENTS NOTED HEREON.
- 3) BEARINGS ARE BASED ON THE OHIO STATE PLANE COORDINATE SYSTEM - OHIO SOUTH ZONE (NAD83) BY GPS OBSERVATION, REFERENCED TO THE ODOT VRS NETWORK.
- 4) ALL IRON PINS SET ARE 3/4" INSIDE DIAMETER IRON PIPES, 30" IN LENGTH WITH A 1" DIAMETER YELLOW CAP STAMPED "SANDS DECKER."

CERTIFICATION

THIS DRAWING IS REPRESENTATIVE OF AN ACTUAL FIELD SURVEY PERFORMED UNDER MY DIRECT SUPERVISION IN APRIL, 2019. THIS DRAWING IS REPRESENTATIVE OF A BOUNDARY SURVEY IN CONFORMANCE WITH OAC 4733-37 STANDARDS FOR BOUNDARY SURVEYS.

SANDS DECKER GPS

STEVEN W. NEWELL
OHIO PROFESSIONAL
SURVEYOR 7212



- IRON PIN FOUND
- IRON PIN SET
- ▲ MAG NAIL SET