

OWNERSHIP PER DEED

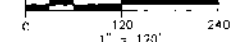
- 1 THE BOARD OF EDUCATION OF FRANKLIN TOWNSHIP
DB 250 PG 10
- 2 THE BOARD OF EDUCATION OF GRANDVIEW HEIGHTS CITY SCHOOL DISTRICT
DB 513 PG 196 DB 513 PG 197
DB 505 PG 105 DB 513 PG 623
DB 515 PG 579 DB 522 PG 139
DB 503 PG 374
- 3 BOARD OF EDUCATION OF GRANDVIEW HEIGHTS VILLAGE SCHOOL DISTRICT
DB 665 PG 272 DB 667 PG 600
DB 694 PG 234 DB 697 PG 535
DB 688 PG 65 DB 698 PG 203
DB 706 PG 255
- 4 THE BOARD OF EDUCATION OF THE GRANDVIEW HEIGHTS C-10 VILLAGE SCHOOL DISTRICT
DB 657 PG 133
- 5 THE BOARD OF EDUCATION OF GRANDVIEW HEIGHTS VILLAGE SCHOOL DISTRICT
DB 672 PG 354 DB 672 PG 355
DB 672 PG 356 DB 673 PG 149
DB 672 PG 350 DB 678 PG 566
DB 678 PG 570 DB 678 PG 574
DB 678 PG 575 DB 678 PG 576
DB 681 PG 365 DB 681 PG 366
DB 701 PG 81 DB 666 PG 609
DB 571 PG 170
- 6 THE BOARD OF EDUCATION OF THE GRANDVIEW HEIGHTS VILLAGE SCHOOL DISTRICT
DB 687 PG 435
- 7 THE BOARD OF EDUCATION OF THE GRANDVIEW HEIGHTS VILLAGE SCHOOL DISTRICT OF GRANDVIEW HEIGHTS, OHIO
DB 698 PG 457
- 8 THE BOARD OF EDUCATION OF GRANDVIEW HEIGHTS VILLAGE SCHOOL DISTRICT OF FRANKLIN COUNTY, OHIO
DB 715 PG 586
- 9 GRANDVIEW HEIGHTS BOARD OF EDUCATION
DB 910 PG 419
DB 2046 PG 165
DB 3545 PG 538
ORDINANCE 95-13
- 10 BOARD OF EDUCATION, CITY OF GRANDVIEW HEIGHTS, OHIO
DB 2054 PG 8
- 11 THE BOARD OF EDUCATION, CITY OF GRANDVIEW HEIGHTS
DB 2077 PG 477
- 12 THE GRANDVIEW HEIGHTS BOARD OF EDUCATION
DB 3530 PG 777
- 13 GRANDVIEW HEIGHTS CITY SCHOOL DISTRICT BOARD OF EDUCATION
OR 26360 E/E

LOT CONSOLIDATION PLAT

BOARD OF EDUCATION OF THE GRANDVIEW HEIGHTS CITY SCHOOL DISTRICT *
STATE OF OHIO, COUNTY OF FRANKLIN, CITY OF GRANDVIEW HEIGHTS
BEING PARTS OF FRACTIONAL SECTION NUMBERS 1 & 12,
TOWNSHIP 1 RANGE 23 OF THE CONGRESS LANDS

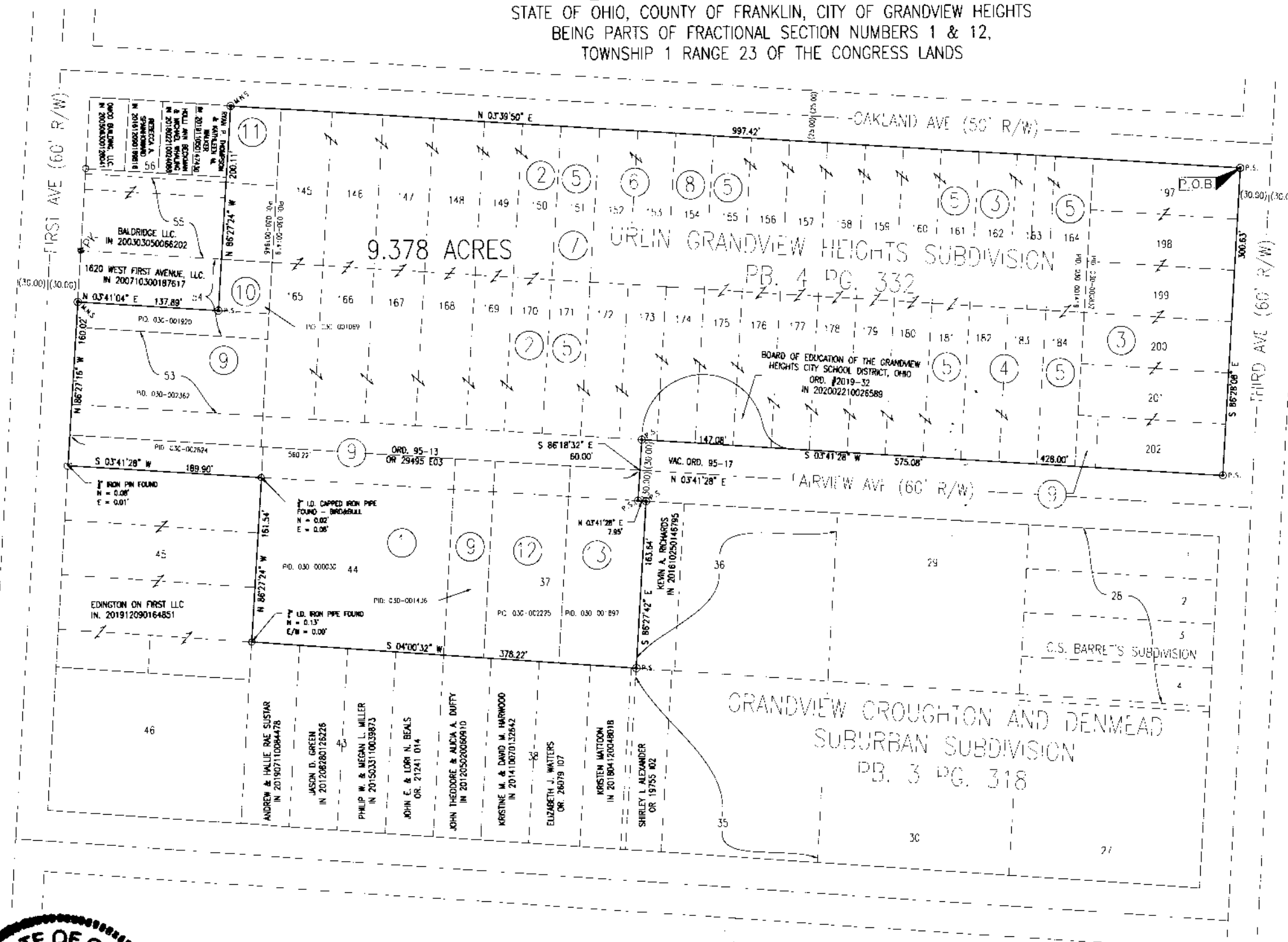


NORTH



GRAPHIC SCALE
(IN FEET)

BASIS OF BEARINGS:
THE BEARINGS SHOWN HEREIN ARE BASED ON THE OHIO STATE PLANE COORDINATE SYSTEM, SOUTH ZONE, NAD83, NSRS 2011, HOLDING A BEARING OF N 03°41'28" E FOR THE WESTERLY RIGHT OF WAY LINE FOR FARMVIEW AVENUE



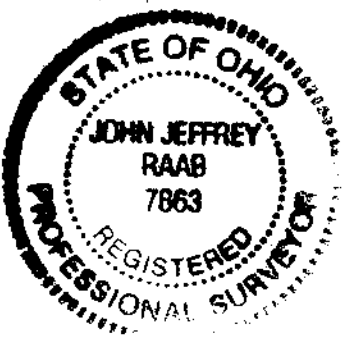
ACREAGE BREAKDOWN

PD: 030-003832	0.014 AC
PD: 030-0007419	5.776 AC
PD: 030-001946	0.772 AC
PD: 030-001069	0.057 AC
PD: 030-001920	0.138 AC
PD: 030-002362	0.453 AC
PD: 030-002824	0.131 AC
PD: 030-000230	0.832 AC
PD: 030-001436	0.774 AC
PD: 030-002225	0.328 AC
PD: 030-001897	0.331 AC

* ALL PREVIOUS OWNER NAMES AS SHOWN ABOVE HAVE BEEN CHANGED TO "BOARD OF EDUCATION OF THE GRANDVIEW HEIGHTS CITY SCHOOL DISTRICT" PER THE SUCCESSOR NAME AFFIDAVIT AS RECORDED IN IN 2020 IN 2020.

THIS PLAT WAS PREPARED FROM AN ACTUAL FIELD SURVEY PERFORMED BY OHM-ADVISORS ALONG WITH PUBLIC RECORDS ON FILE IN THE FRANKLIN COUNTY RECORDER'S OFFICE AND FRANKLIN COUNTY ENGINEER'S OFFICE, MARCH 10, 2020.

John J. Raab 3/11/2020
JOHN J. RAAB, PS 7863
DATE 1/8/2020



LEGEND

◆PK	MAG. NAIL FOUND
○	IRON PIPE FOUND
⊙	IRON PIN FOUND
⊙M.S.	MAG. NAIL SET
⊙P.S.	30" LONG 3/4" I.D. IRON PIPE SET WITH YELLOW CAP STAMPED "OHM"

RECEIVED

MAR 12 2020

Franklin County Engineer
Carol R. Robertson, P.E., P.S.

OHM

ARCHITECTS ENGINEERS PLANNERS
580 N. Fourth St.
Suite 630
Columbus, Ohio
43215
OHM-ADVISORS.COM