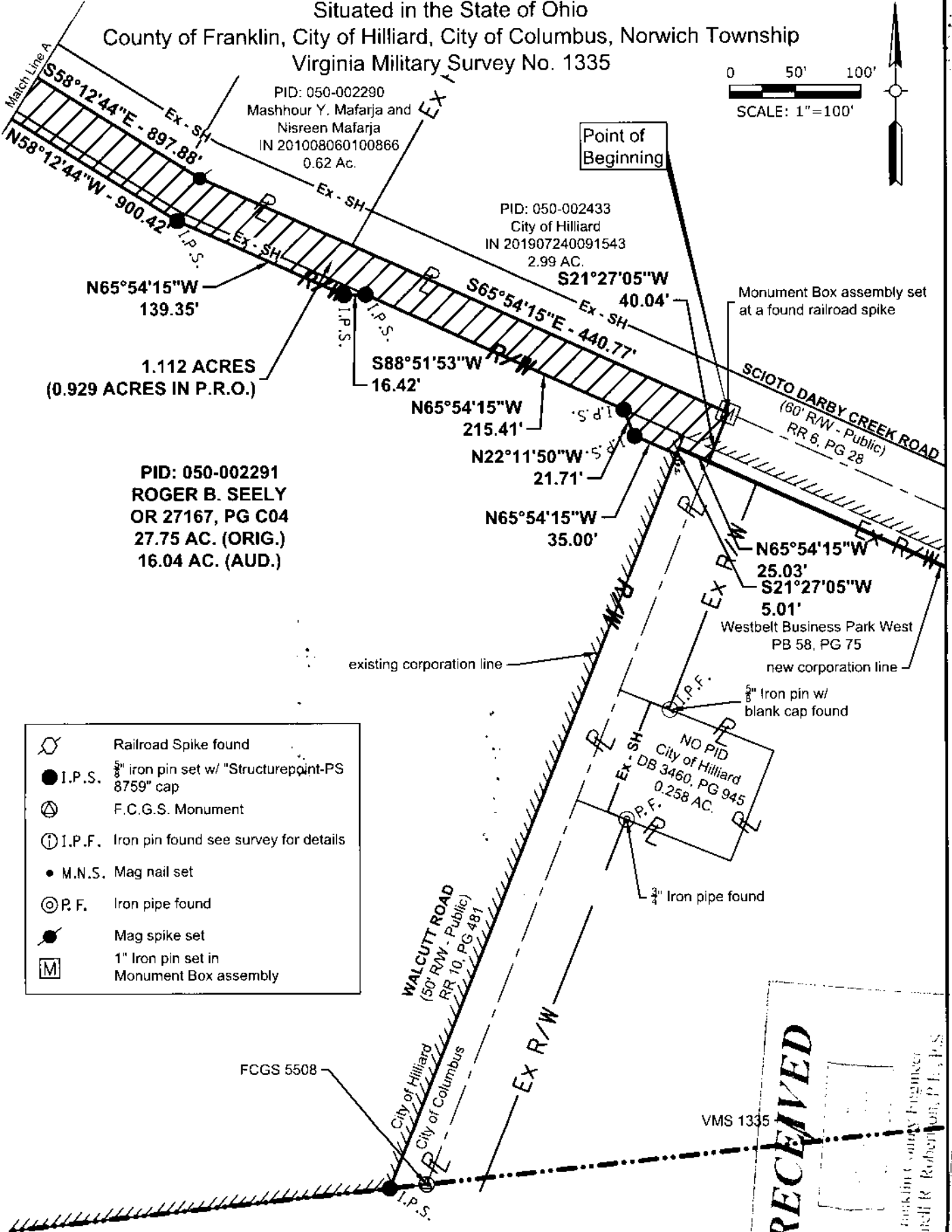


Situated in the State of Ohio
County of Franklin, City of Hilliard, City of Columbus, Norwich Township
Virginia Military Survey No. 1335

0 50' 100'
SCALE: 1"=100'



- Railroad Spike found
- I.P.S. 5/8" iron pin set w/ "Structurepoint-PS 8759" cap
- F.C.G.S. Monument
- I.P.F. Iron pin found see survey for details
- M.N.S. Mag nail set
- P.F. Iron pipe found
- Mag spike set
- 1" Iron pin set in Monument Box assembly

RECEIVED

Franklin County Engineer
Curtis R. Robertson, P.E., P.S.

Basis of bearing:
Bearings shown hereon are based North 58 degrees 12 minutes 44 seconds West for the centerline of right-of-way of Scioto Darby Creek Road, measured from Grid North, referenced to the Ohio State Plane Coordinate System (South Zone) and the North American Datum of 1983 (2011 Adjustment), as established utilizing a GPS survey and an NGS OPUS solution.

I hereby certify that:
This drawing represents the results of an actual field survey of the premises performed by American Structurepoint, Inc., in Oct. 2019 and is true and correct to the best of my knowledge and belief.

Andrew T. Jordan, P.S. No. 8759
American Structurepoint, Inc.
Date 7-9-2020



Scioto Darby Creek &
Walcutt Road
Roundabout
City of Hilliard, Ohio

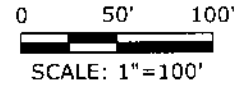


Scale:	1" = 20'
Drawn By:	ATJ
Checked By:	BPB
Date:	07/06/2020
Job No.:	2014.00314

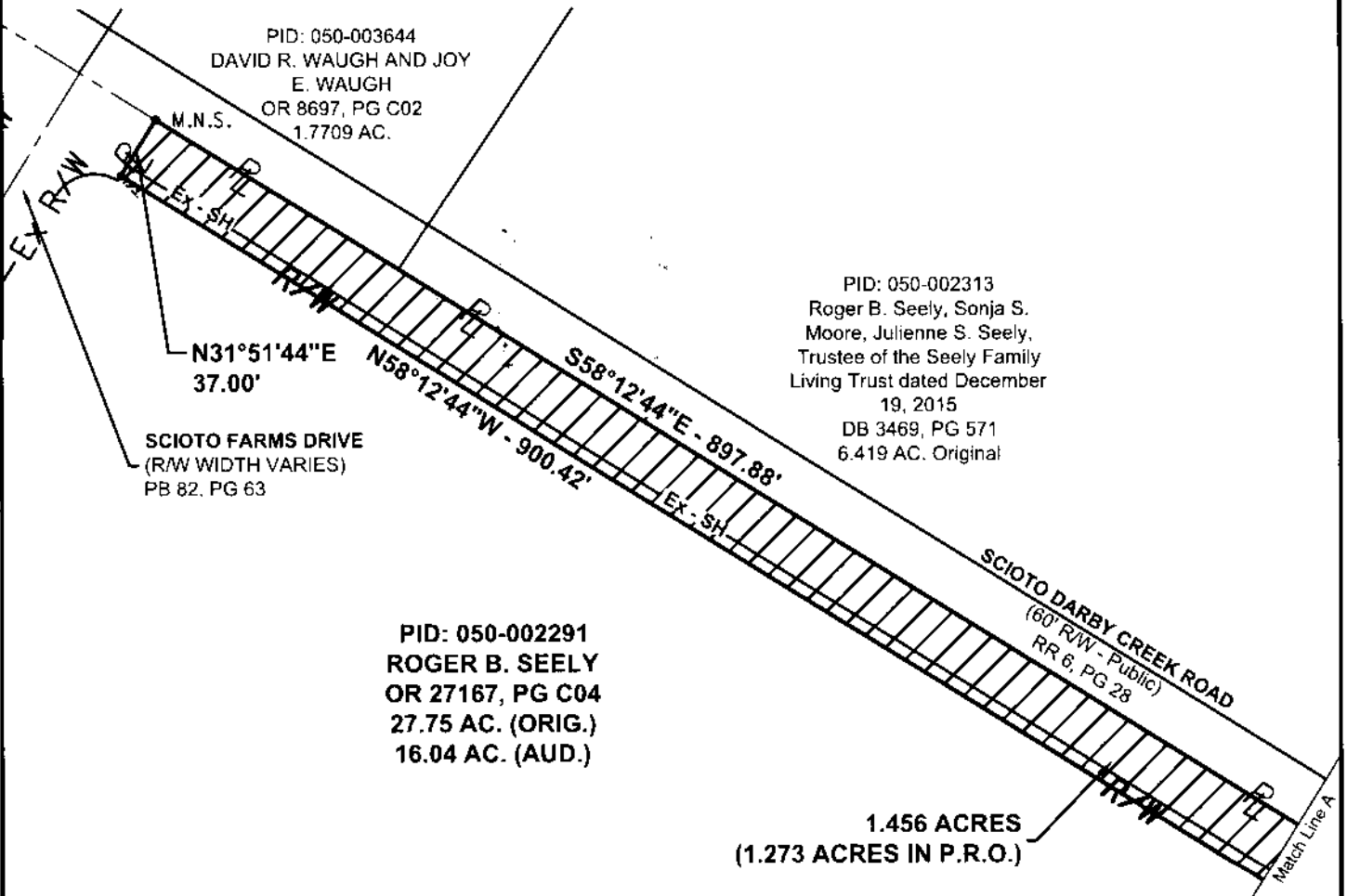
Sheet 2 of 2

Exhibit "B"
1.112 Ac. Fee R/W
Acquired from
Roger B. Seely

Situated in the State of Ohio
County of Franklin, City of Hilliard, City of Columbus, Norwich Township
Virginia Military Survey No. 1335



- Railroad Spike found
- I.P.S. 5/8" iron pin set w/ "Structurepoint-PS 8759" cap
- F.C.G.S. Monument
- I.P.F. Iron pin found see survey for details
- M.N.S. Mag nail set
- R.F. Iron pipe found
- Mag spike set
- 1" Iron pin set in Monument Box assembly



Basis of bearing:
Bearings shown hereon are based North 58 degrees 12 minutes 44 seconds West for the centerline of right-of-way of Scioto Darby Creek Road, measured from Grid North, referenced to the Ohio State Plane Coordinate System (South Zone) and the North American Datum of 1983 (2011 Adjustment), as established utilizing a GPS survey and an NGS OPUS solution.

RECEIVED

Franklin County Engineer
Curtis R. Robertson, P.E., P.S.