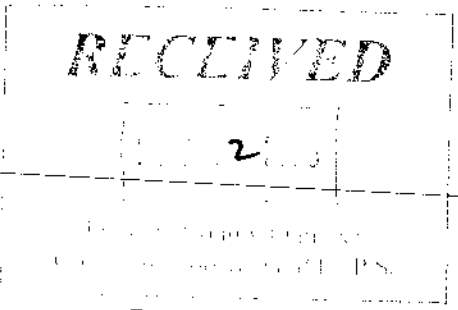
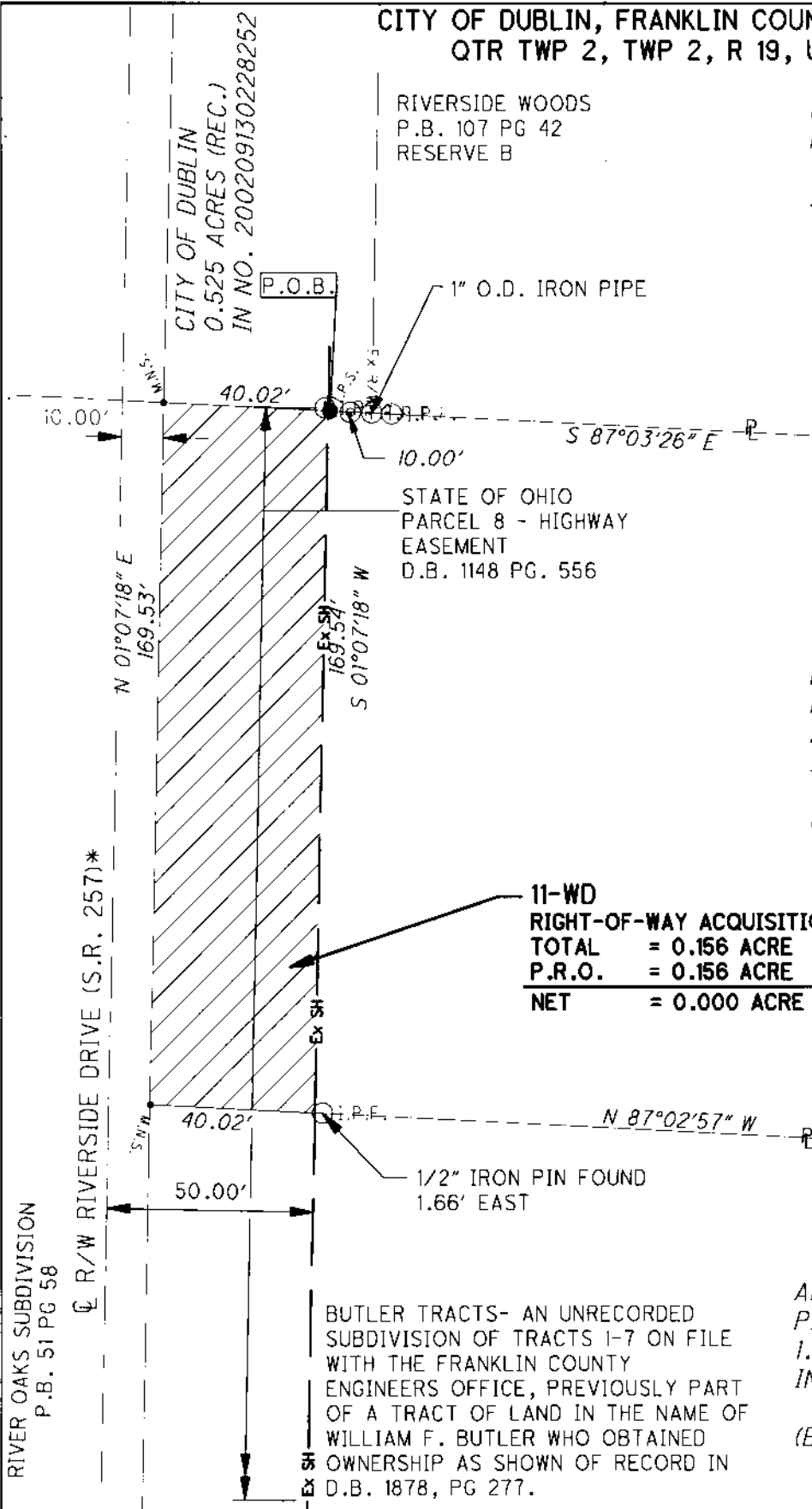
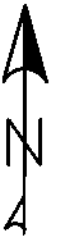


CITY OF DUBLIN, FRANKLIN COUNTY, OHIO
QTR TWP 2, TWP 2, R 19, USML

RIVERSIDE WOODS
P.B. 107 PG 42
RESERVE B

CITY OF DUBLIN
PID. 273-011544
18.754 ACRES (REC.)
IN NO. 200606050107767



11

BILLY GENE LANEY, TRUSTEE
PID. 273-008663
2.016 ACRES (REC.)
IN NO. 201107200090147

(BUTLER TRACT 1)

11-WD
RIGHT-OF-WAY ACQUISITION
TOTAL = 0.156 ACRE
P.R.O. = 0.156 ACRE
NET = 0.000 ACRE

12

AMBROZ INVESTMENTS LLC
PID. 273-008717
1.101 ACRES (REC.)
IN NO. 201911190154304

(BUTLER TRACT 2)

RIVER OAKS SUBDIVISION
P.B. 51 PG 58

BUTLER TRACTS- AN UNRECORDED
SUBDIVISION OF TRACTS 1-7 ON FILE
WITH THE FRANKLIN COUNTY
ENGINEERS OFFICE, PREVIOUSLY PART
OF A TRACT OF LAND IN THE NAME OF
WILLIAM F. BUTLER WHO OBTAINED
OWNERSHIP AS SHOWN OF RECORD IN
D.B. 1878, PG 277.

LEGEND

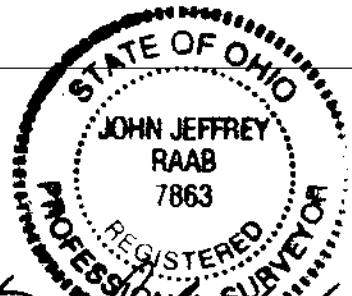
- I.P.S. 3/4" I.D. IRON PIPE SET WITH CAP STAMPED "OHM"
- M.N.S. MAG NAIL SET

▨ 11-WD 0.156 ACRE
RIGHT-OF-WAY ACQUISITION

* CENTERLINE PER STATE OF OHIO RIGHT OF WAY PLAN
OF DUBLIN-BELLPOINT ROAD S.H. 558 SEC. A (1940)

BASIS OF BEARING

BEARINGS ARE BASED ON THE OHIO STATE PLANE COORDINATE
SYSTEM, SOUTH ZONE (NSRS 2007), AS ESTABLISHED FROM A
GPS SURVEY UTILIZING ODOT CORS STATION "COLB"
PERFORMED BY OHM-ADVISORS IN 2019.



John J. Raab
JOHN J. RAAB, PS 7863
DATE



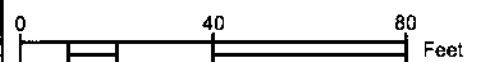
EXHIBIT B

PARCEL 11-WD

RIVERSIDE DRIVE EAST
SHARED-USE PATH
SECTION 1

PROJECT NO: 19-011-CIP

DATE: 4-30-2020



SHEET NO. 1 OF 1