

APR 2 2020

B-2-A



Evans, Mechwart, Hambleton & Tilton, Inc.
Engineers + Surveyors + Planners + Scientists
5500 New Albany Road, Columbus, OH 43054
Phone: 614.775.4500 Toll free: 888.775.3646
emht.com

SURVEY OF ACREAGE PARCEL

VIRGINIA MILITARY SURVEY DISTRICT NUMBER 7693
TOWNSHIP OF BROWN, COUNTY OF FRANKLIN, STATE OF OHIO

Date: April 24, 2020

Job No: 2020-0464

Scale: 1" = 200'

- = STONE FND.
- = MON. FND.
- = I.P. FND.
- = I.P. SET
- = MAG. NAIL FND.
- = MAG. NAIL SET
- ▲ = R.R. SPK. FND.
- ◆ = P.K. NAIL FND.

I.P. Set are 13/16" I.D. iron pipes
30" long with cap inscribed EMHT INC.



GRAPHIC SCALE (in feet)

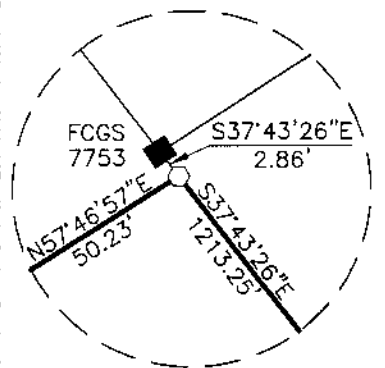
SURVEY NOTE:

This survey was prepared using documents of record, prior plats of survey, and observed evidence located by an actual field survey.

Ⓐ BARBARA BRAKE AND ROGER BUGG, CO-TRUSTEES
TRACT TWO
33 AC. (DEED)
I.N. 201611090155527

Ⓑ HILL DISTRIBUTING COMPANY
594.123 AC. (DEED)
O.R. 26507D06

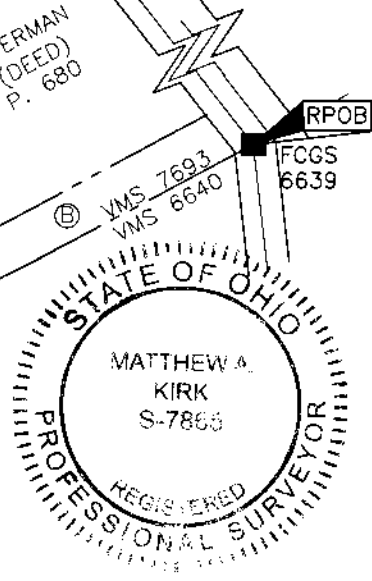
LINE TABLE		
LINE	BEARING	DISTANCE
L1	N37°43'26"W	451.04'
L2	S61°13'16"W	50.62'
L3	N57°46'57"E	50.23'



Detail (Not to Scale)

BASIS OF BEARINGS:

The bearings shown hereon are based on the Ohio State Plane Coordinate System South Zone, NAD83 (2011). Control for bearings was from coordinates of monuments 6639 and 7753, having a bearing of North 37° 43' 26" West between said monuments, established by the Franklin County Engineering Department using Global Positioning System procedures and equipment.



By Matthew A. Kirk

24 APR 20

Matthew A. Kirk
Professional Surveyor No. 7865
mkirk@emht.com

Date

I:\2020\0464\DWG\ASHEETS\BOUNDARY\20200464-YS-BNDY-01.DWG plotted by YOUSSEF, SHERRI on 4/24/2020 9:23:28 AM last saved by SYOUSSEF on 4/24/2020 9:11:03 AM
Xref: 20171164-YS-PLAT-SEC3-PRTI.DWG & 20171045-YS-ALTA-01.DWG & 20171045-VG-TOPG-ALTA-01.DWG