

APR 2 2020

Franklin County Engineer  
Council K. Robertson, P.E., P.S.

2-8-F



# SURVEY OF ACREAGE PARCEL

QUARTER TOWNSHIP 3, TOWNSHIP 2, RANGE 16  
UNITED STATES MILITARY DISTRICT  
CITY OF NEW ALBANY, COUNTY OF FRANKLIN, STATE OF OHIO

Date: April 15, 2020      Job No: 2020-0440      Scale: 1" = 60'

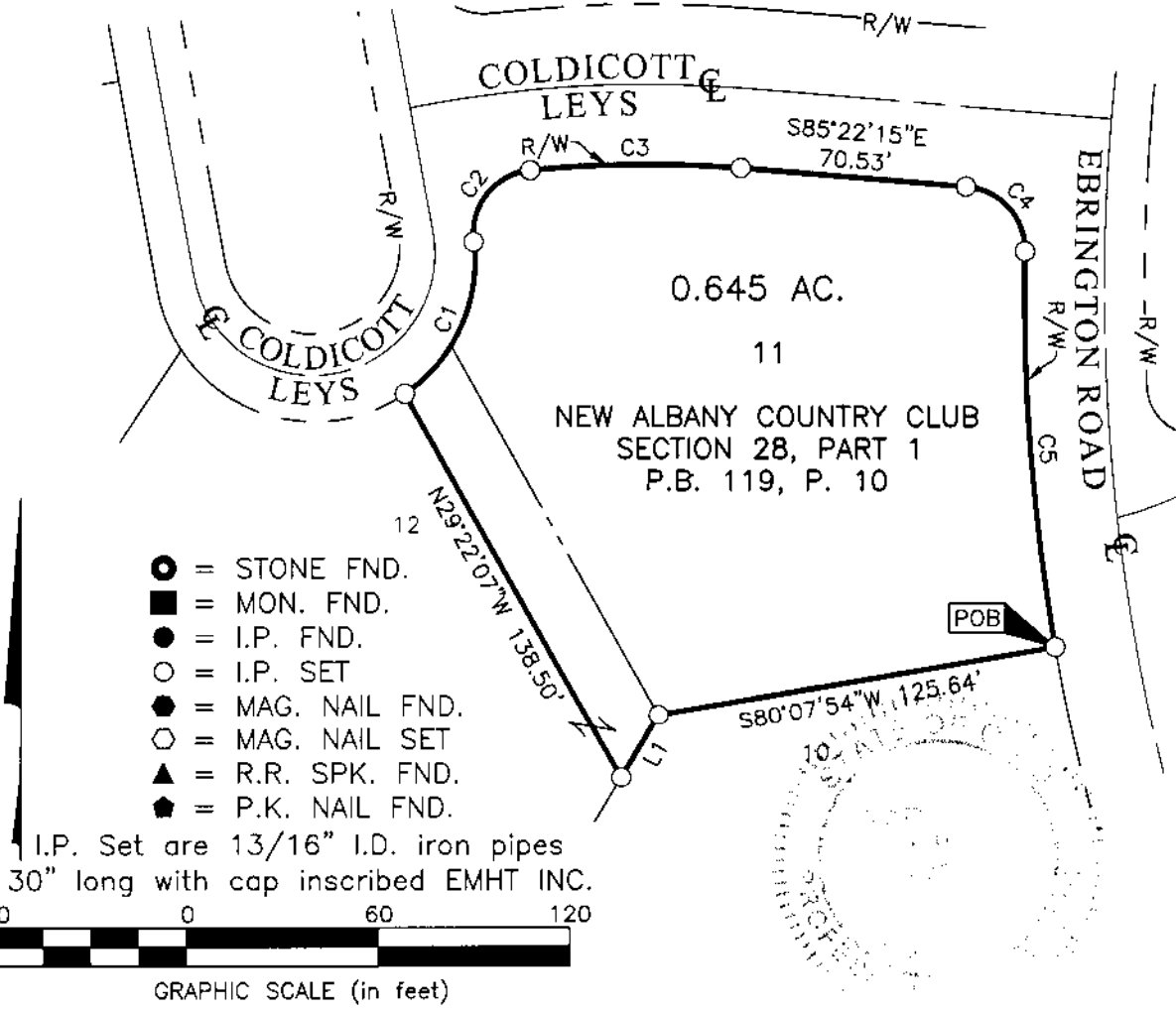
**BASIS OF BEARINGS:**  
The bearings shown hereon are based the same meridian as the bearings shown on the subdivision plat entitled "New Albany Country Club Section 20 Part 1", of record in Plat Book 103, Pages 84 and 85, Recorder's Office, Franklin County, Ohio. On said plat of record, a portion of the center line of Thompson Road is shown as having a bearing of North 86° 19' 35" West.

**SURVEY NOTE:**  
This survey was prepared using documents of record, prior plats of survey, and observed evidence located by an actual field survey.

LINE TABLE		
LINE	BEARING	DISTANCE
L1	S30°32'26"W	23.12'

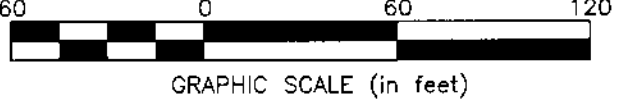
CURVE TABLE					
CURVE	DELTA	RADIUS	ARC	CH. BEARING	CH. DIST.
C1	62°45'03"	50.00'	54.76'	N24°14'26"E	52.06'
C2	91°05'51"	20.00'	31.80'	N38°24'49"E	28.55'
C3	10°38'57"	355.00'	65.98'	N89°18'16"E	65.89'
C4	86°14'00"	20.00'	30.10'	S42°15'15"E	27.34'
C5	10°43'51"	665.00'	124.55'	S04°30'10"E	124.36'

U:\2020\0440\DWG\CASHETS\BOUNDARY\20200440-VS-BNDY-02.DWG plotted by YOUSSEF, SHERRI on 4/15/2020 2:09:02 PM last saved by SYOUSSEF on 4/15/2020 2:08:47 PM  
 Xrefs: 20200440-VS-BNDY-01.DWG & 20131824-VS-PLAT-SEC28-PH51-REV2.DWG & 20131824-VS-SEC28-PH52.DWG



- = STONE FND.
- = MON. FND.
- = I.P. FND.
- = I.P. SET
- = MAG. NAIL FND.
- = MAG. NAIL SET
- ▲ = R.R. SPK. FND.
- ◆ = P.K. NAIL FND.

I.P. Set are 13/16" I.D. iron pipes 30" long with cap inscribed EMHT INC.



By Matthew A. Kirk      Date 15 APRIL 20  
 Matthew A. Kirk      Professional Surveyor No. 7865  
 mkirk@emht.com

