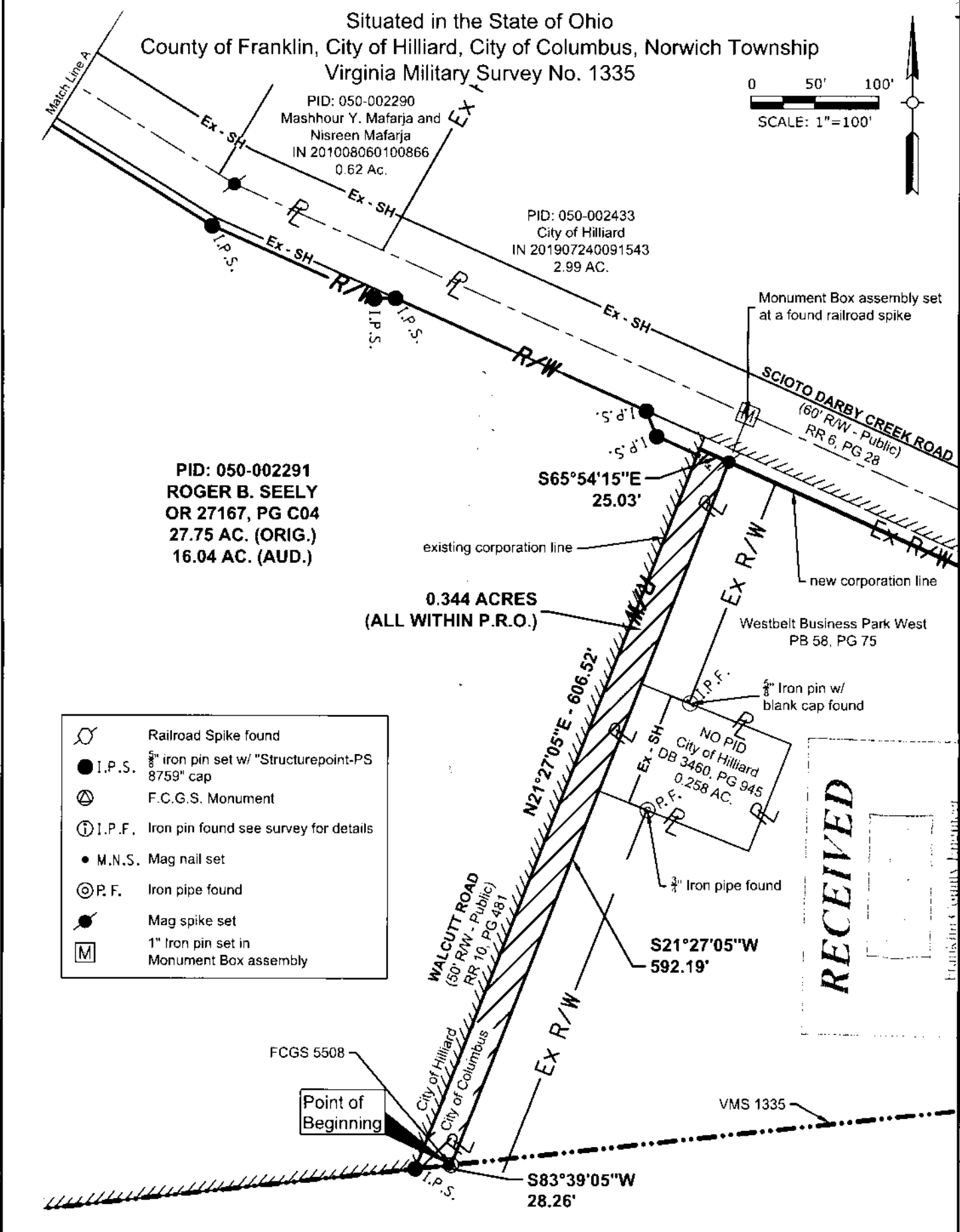


B-6-B

<b>Scioto Darby Creek &amp; Walcutt Road Roundabout</b> City of Hilliard, Ohio	 AMERICAN STRUCTUREPOINT INC. 2259 Corporate Exchange Drive   Suite 300 Columbus, Ohio 43231 TEL 614 901 2235 FAX 614 901 2236 www.structurepoint.com	Scale: 1" = 100'	Sheet 1 of 1	<b>Exhibit "B"</b> 0.344 Ac. Fee R/W Acquired from Roger B. Seely
		Drawn By: ATJ		
		Checked By: BPB		
		Date: 07/06/2020		
		Job No.: 2014.00314		

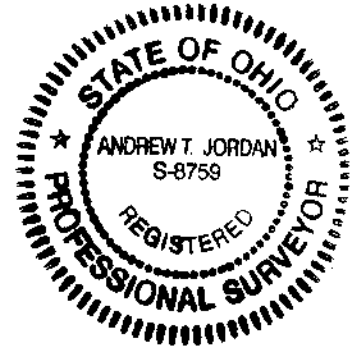


Basis of bearing:  
 Bearings shown hereon are based North 58 degrees 12 minutes 44 seconds West for the centerline of right-of-way of Scioto Darby Creek Road, measured from Grid North, referenced to the Ohio State Plane Coordinate System (South Zone) and the North American Datum of 1983 (2011 Adjustment), as established utilizing a GPS survey and an NGS OPUS solution.

I hereby certify that:  
 This drawing represents the results of an actual field survey of the premises performed by American Structurepoint, Inc., in Oct. 2019 and is true and correct to the best of my knowledge and belief.

*Andrew T. Jordan*  
 Andrew T. Jordan, P.S. No. 8759  
 American Structurepoint, Inc.

7-9-2020  
 Date



Franklin County Engineer  
 Grace E. Robertson, P.L.P.S.