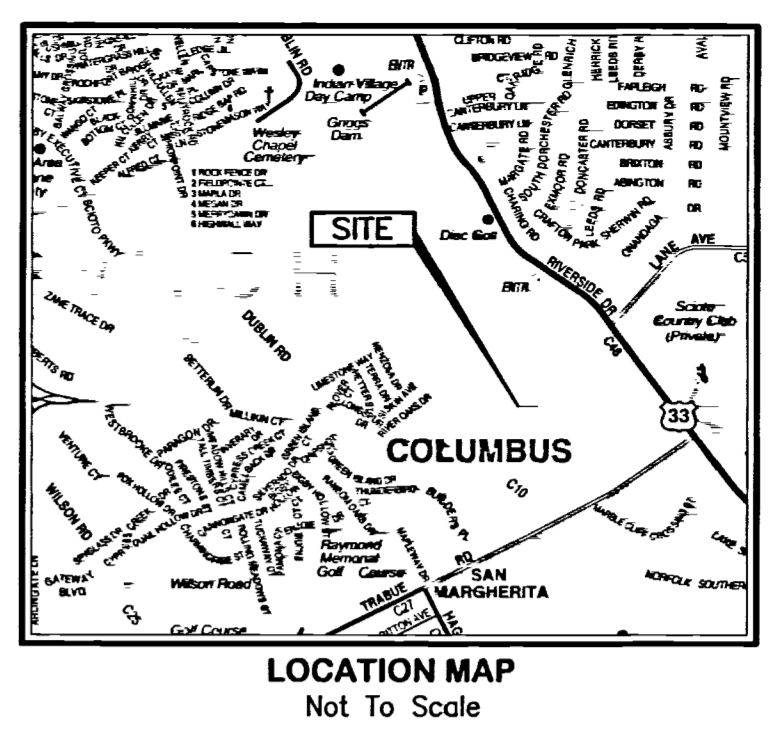


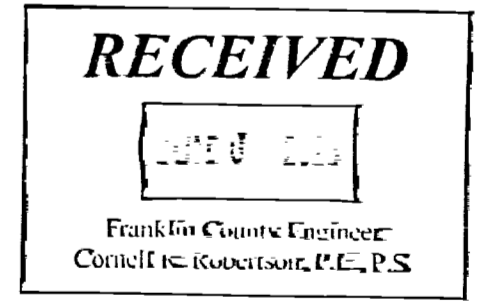
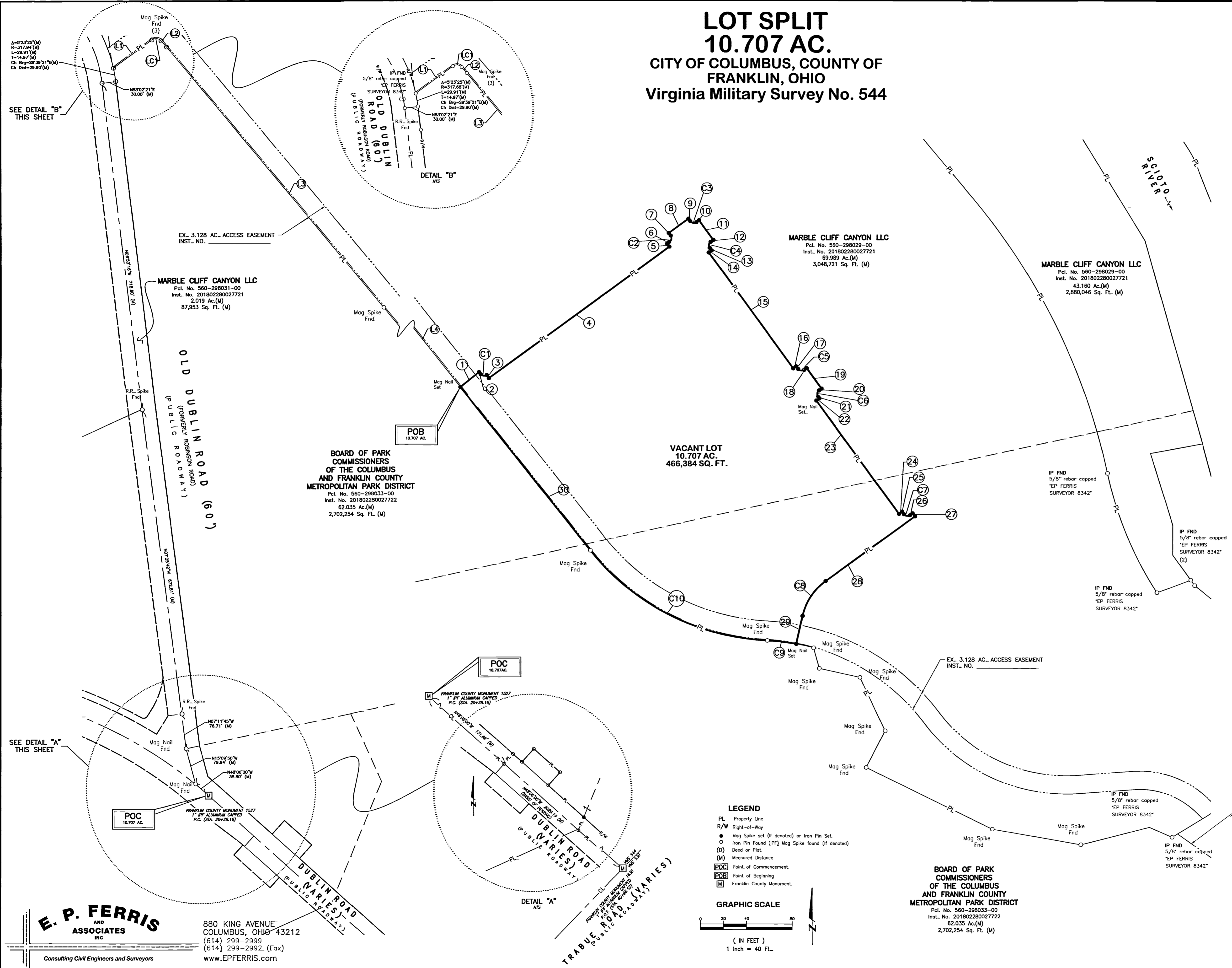
LOT SPLIT 10.707 AC. CITY OF COLUMBUS, COUNTY OF FRANKLIN, OHIO Virginia Military Survey No. 544



LINE TABLE		CURVE TABLE					
LINE NO.	LENGTH BEARING	NO.	LENGTH	RADIUS	DELTA	CHORD	CHORD BEARING
1	52.02' N51°37'01"E	C1	14.52'	9.50'	087°33'45"	13.15'	S82°09'51"E
2	5.77' S38°22'59"E	C2	14.92'	9.50'	097°00'17"	13.44'	N08°56'59"E
3	8.25' S36°03'09"E	C3	14.92'	9.50'	097°00'00"	13.44'	S81°03'09"E
4	487.35' N53°56'51"E	C4	14.92'	9.50'	097°00'00"	13.44'	S08°56'51"W
5	8.25' N36°03'09"W	C5	14.92'	9.50'	097°00'00"	13.44'	S81°03'09"E
6	7.00' N53°57'08"E	C6	14.92'	9.50'	097°00'00"	13.44'	S08°56'51"W
7	7.00' N36°03'09"W	C7	14.92'	9.50'	097°00'00"	13.44'	S81°03'09"E
8	53.00' N53°56'51"E	C8	93.31'	129.25'	041°21'45"	91.29'	S33°15'58"W
9	7.00' S36°03'09"E	C9	63.96'	477.50'	007°40'30"	63.92'	N83°33'47"W
10	7.00' N53°56'51"E	C10	447.01'	522.50'	049°01'03"	433.50'	N62°53'30"W
11	53.00' S36°03'09"E						
12	7.00' S53°56'51"W						
13	7.00' S36°03'09"E						
14	7.75' S53°56'51"W						
15	513.00' S36°03'09"E						
16	7.75' N53°56'51"E						
17	7.00' S36°03'09"E						
18	6.83' N53°56'51"E						
19	55.00' S36°03'09"E						
20	6.83' S53°56'51"W						
21	5.00' S36°03'09"E						
22	8.25' S53°56'51"W						
23	306.95' S36°03'09"E						
24	8.25' N53°56'51"E						
25	7.05' S36°03'09"E						
26	7.00' N53°56'51"E						
27	8.25' S36°03'09"E						
28	241.19' S53°56'51"W						
29	62.63' S12°35'06"W						
30	457.05' N38°22'59"W						

LEAD IN LINE TABLE	
LINE	BEARING
L1	104.06' N53°34'16"E
L2	17.98' S41°28'43"E
L3	846.43' S39°40'37"E
L4	404.02' S38°22'59"E

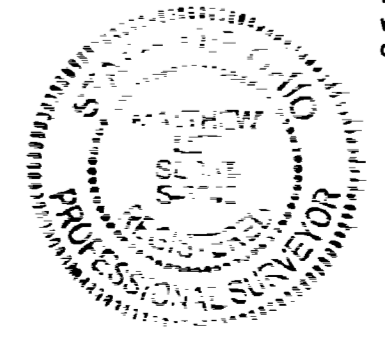
LEAD IN CURVE TABLE				
NO.	LENGTH	RADIUS	DELTA	CHORD
LC1	22.24'	15.00'	084°57'00"	20.26'



BASIS OF BEARING
The bearings shown on this plat are based on the Ohio State Plane Coordinate System, South Zone, NAD83 (2012A). Control for bearings was from coordinates of monuments F005 1638 and F005 1522, as established by the Franklin County Engineering Department, using Global Positioning System procedures and equipment, with a bearing of N45°00'00"W for a portion of the centerline of Dublin Road and is designated the "Basis of Bearing" for this plat.

Iron pins set are 5/8" rebar, 30" in length with a yellow plastic cap with "EP FERRIS SURVEYOR 8342" inscribed on top.
Mag spikes set are set in solid rock and are 3" long, 3/8" shaft diameter magnetic spikes with a 1" diameter head with a 2" diameter brass washer with "EP FERRIS SURVEYOR 8342" inscribed on top.
Field survey was conducted from 11-01-16 to 11-14-17.

CERTIFICATION
We hereby certify that the foregoing Boundary Survey was prepared from actual field measurements in accordance with Chapter 4733-37 Ohio Administrative Code.



By: *Matthew Lee Sloot* 6/8/20
Matthew Lee Sloot, P.E., P.S.
Registered Surveyor No. 8342
DRWN BY CRK CHK BY MLS DATE 06-04-2020

E. P. FERRIS AND ASSOCIATES INC.
880 KING AVENUE
COLUMBUS, OHIO 43212
(614) 299-2999
(614) 299-2992 (Fax)
www.EPFERRIS.com
Consulting Civil Engineers and Surveyors

BOARD OF PARK COMMISSIONERS OF THE COLUMBUS AND FRANKLIN COUNTY METROPOLITAN PARK DISTRICT
Pct. No. 560-298033-00
Inst. No. 201802280027722
62.035 Ac.(M)
2,702,254 Sq. Ft. (M)

M:\1005013_TribuneRoad\DWG\Basemap\A\1005013_10.707_Acra_Tribune.dwg ~89,989 Ac LAST EDITED: Bricely on 6/8/20