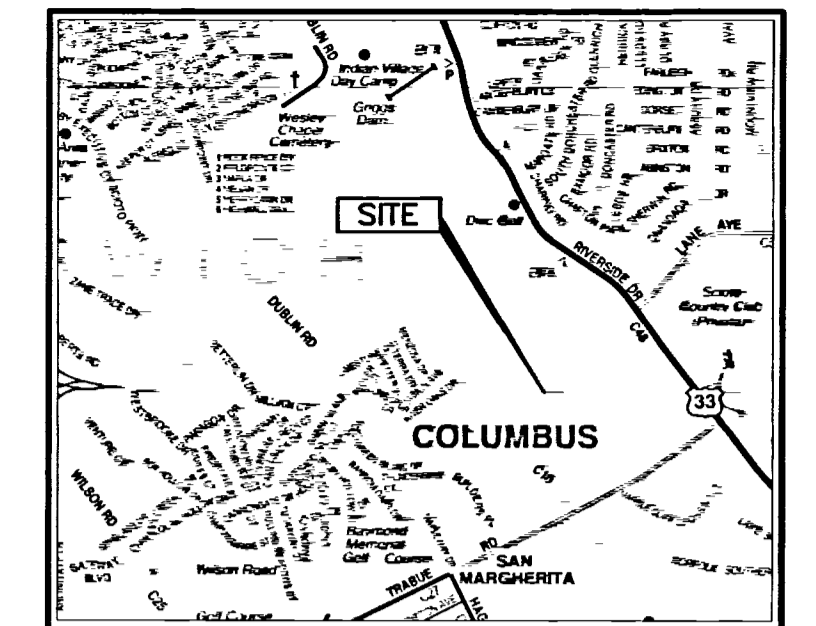
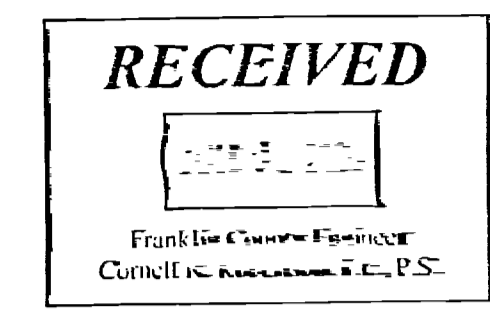


LOT SPLIT 14.142 AC. CITY OF COLUMBUS, COUNTY OF FRANKLIN, OHIO Virginia Military Survey No. 544



LOCATION MAP
Not To Scale

NO.	LENGTH	RADIUS	DELTA	CHORD	CHORD BEARING
C1	93.31'	129.25'	041°21'45"	91.29'	N33°15'58"E
C2	75.43'	239.25'	018°03'49"	75.12'	N62°58'45"E
C3	15.19'	9.50'	091°37'09"	13.62'	N27°06'48"E
C4	342.50'	1319.00'	014°52'40"	341.54'	N26°08'07"W
C5	14.86'	9.52'	089°26'07"	13.40'	N81°16'50"W
C6	15.05'	9.50'	090°44'21"	13.52'	N08°34'40"E
C7	4.99'	1319.00'	000°13'00"	4.99'	N36°54'01"W
C8	603.41'	1380.00'	025°03'09"	598.61'	S24°28'56"E
C9	284.64'	773.78'	021°04'35"	283.03'	S22°29'39"E
C10	38.62'	477.50'	004°38'02"	38.61'	N77°24'31"W

NO.	LENGTH	RADIUS	DELTA	CHORD	CHORD BEARING
LC1	22.24'	15.00'	084°57'00"	20.26'	S83°57'13"E
LC2	447.01'	522.50'	049°01'03"	433.50'	S62°53'30"E
LC3	63.96'	477.50'	007°40'30"	63.92'	S83°33'47"E

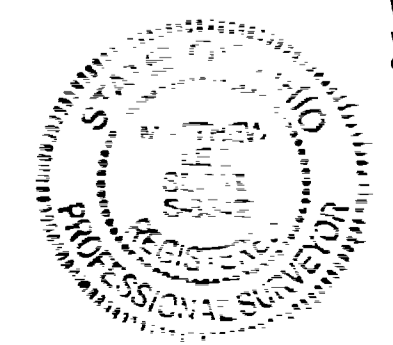
LINE	LENGTH	BEARING
L1	104.06'	N53°34'16"E
L2	17.98'	S41°28'43"E
L3	846.43'	S39°40'37"E
L4	861.06'	S38°22'59"E

LINE	LENGTH	BEARING
1	62.63'	N12°35'06"E
2	540.75'	N53°56'51"E
3	8.28'	N17°04'38"W
4	5.56'	N72°55'22"E
5	3.86'	S53°56'51"W
6	55.00'	N38°03'09"W
7	5.00'	N53°56'51"E
8	61.00'	N52°59'29"E
9	78.71'	N69°21'37"E
10	14.68'	S33°44'52"E
11	133.83'	S51°15'44"E
12	131.24'	S17°20'07"E
13	263.36'	S12°01'06"W
14	161.16'	S58°37'36"W
15	53.97'	N66°17'48"W
16	154.01'	S75°31'21"W
17	195.89'	N80°00'25"W
18	306.12'	N63°54'23"W
19	90.16'	N27°16'06"E
20	129.28'	N25°12'38"W
21	90.98'	N77°41'44"W
22	46.57'	N13°31'14"W

BASIS OF BEARING
The bearings shown on this plot are based on the Ohio State Plane Coordinate System, South Zone, NAD83 (2011A). Control for bearings was from coordinates of monuments FCCS 1638 and FCCS 1527, as established by the Franklin County Engineering Department, using Global Positioning System procedures and equipment, with a bearing of N48°06'00"W for a portion of the centerline of Dublin Road and is designated the "Basis of Bearing" for this plot.
Iron pins set are 5/8" rebar, 30" in length with a yellow plastic cap with "EP FERRIS SURVEYOR 8342" inscribed on top.
Mag spikes set are set in solid rock and are 3" long, 3/8" short diameter magnetic spikes with a 1" diameter head with a 2" diameter brass washer with "EP FERRIS SURVEYOR 8342" inscribed on top.
Field survey was conducted from 11-01-18 to 11-14-17.

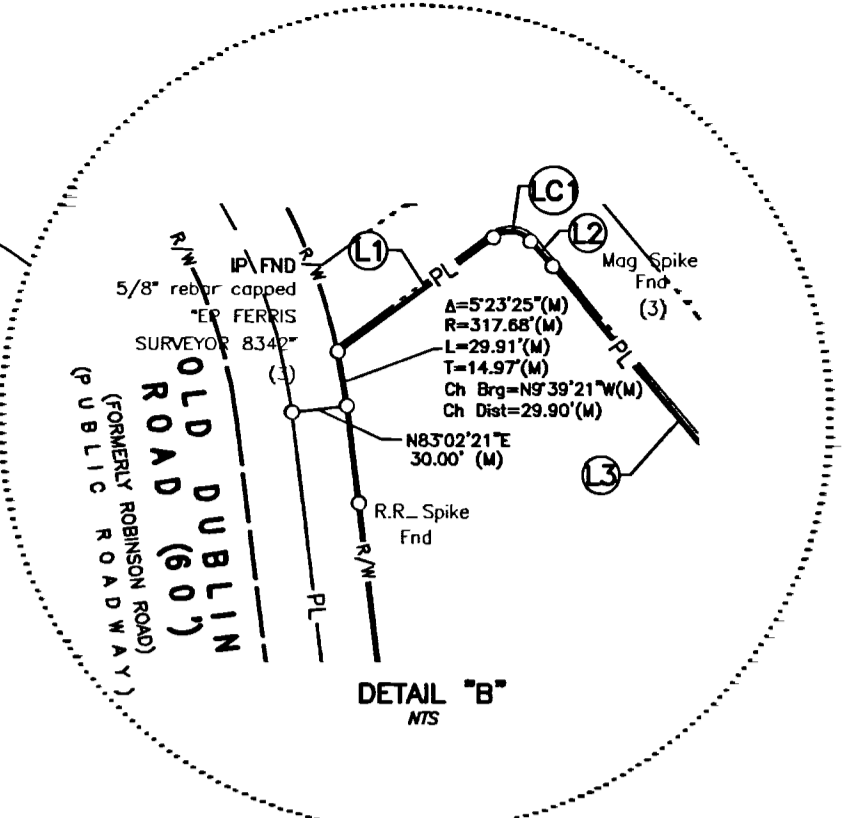
CERTIFICATION
We hereby certify that the foregoing Boundary Survey was prepared from actual field measurements in accordance with Chapter 4733-37 Ohio Administrative Code.

By: *Matthew Lee Sloat* 6/18/20
Matthew Lee Sloat, P.E., P.S.
Registered Surveyor No. 8342
DRWN BY: CRK CHK BY: MLS DATE: 06-04-2020



A=523'25"(M)
R=317.68'(M)
L=29.91'(M)
T=14.97'(M)
Ch. Str=102°32'21"E(M)
Ch. Dist=29.90'(M)

SEE DETAIL "B"
THIS SHEET



DETAIL "B"
N/S

SEE DETAIL "A"
THIS SHEET

DETAIL "A"
N/S

E. P. FERRIS AND ASSOCIATES INC.
880 KING AVENUE
COLUMBUS, OHIO 43212
(614) 299-2999
(614) 299-2992 (Fax)
www.EPFERRIS.com

MARBLE CLIFF CANYON LLC
Pcl. No. 560-298031-00
Inst. No. 201802280027721
2.019 Ac.(M)
87,953 Sq. Ft. (M)

BOARD OF PARK COMMISSIONERS OF THE COLUMBUS AND FRANKLIN COUNTY METROPOLITAN PARK DISTRICT
Pcl. No. 560-298033-00
Inst. No. 201802280027722
62.035 Ac.(M)
2,702,254 Sq. Ft. (M)

MARBLE CLIFF CANYON LLC
Pcl. No. 560-298029-00
Inst. No. 201802280027721
69.989 Ac.(M)
3,048,721 Sq. Ft. (M)

MARBLE CLIFF CANYON LLC
Pcl. No. 560-298028-00
Inst. No. 201802280027721
43.160 Ac.(M)
2,880,046 Sq. Ft. (M)

VACANT LOT
14.142 AC.
616,027 SQ. FT.

POB
14.142 AC.

POC
14.142 AC.

POC
14.142 AC.

BOARD OF PARK COMMISSIONERS OF THE COLUMBUS AND FRANKLIN COUNTY METROPOLITAN PARK DISTRICT
Pcl. No. 560-298033-00
Inst. No. 201802280027722
62.035 Ac.(M)
2,702,254 Sq. Ft. (M)

- LEGEND**
- PL Property Line
 - R/W Right-of-Way
 - Mag Spike set (if denoted) or Iron Pin Set
 - Iron Pin Found (IP) Mag Spike found (if denoted)
 - (D) Deed or Plat.
 - (M) Measured Distance
 - POC Point of Commencement
 - POB Point of Beginning
 - M Franklin County Monument

