

# 1.036 ACRE & 0.983 ACRE LOT SPLIT

STATE OF OHIO, COUNTY OF FRANKLIN, CITY OF CANAL WINCHESTER  
SECTION 24 & 25, TOWNSHIP 11, RANGE 21, CONGRESS LANDS

**RECEIVED**

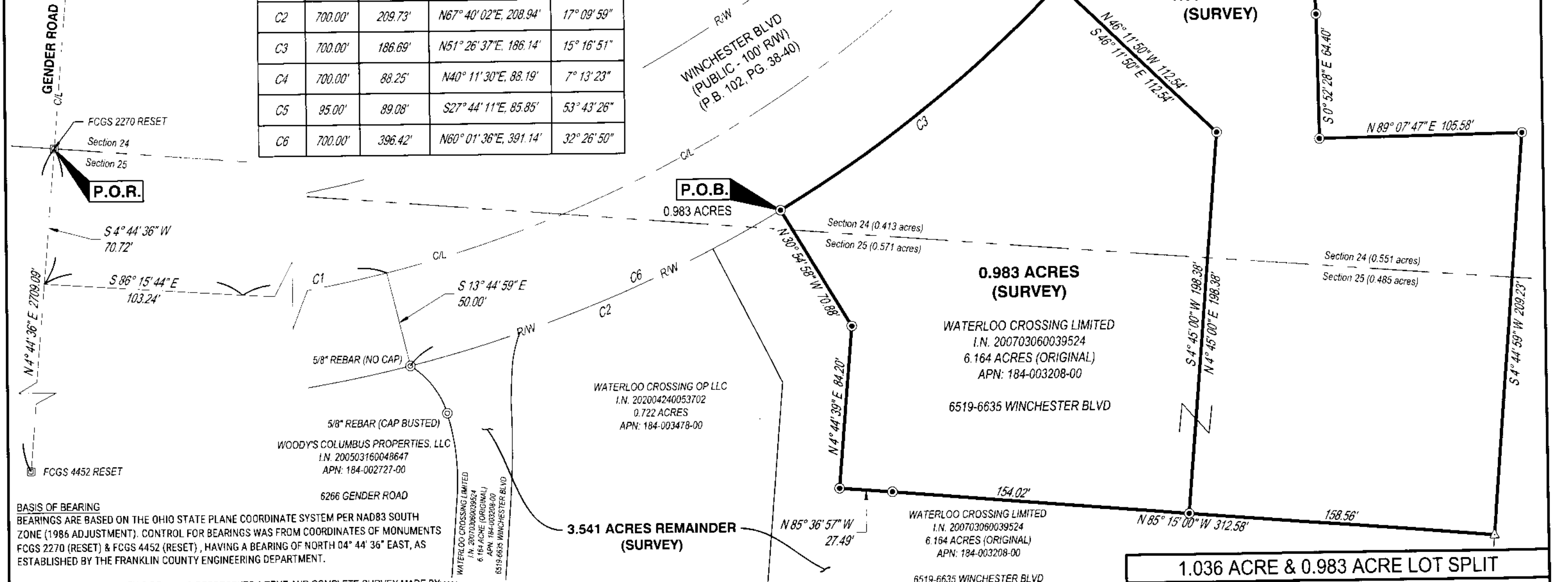
MAY 18 2020

Franklin County Engineer  
Cornell R. Robertson, P.E., P.S.



GRAPHIC SCALE (IN FEET)

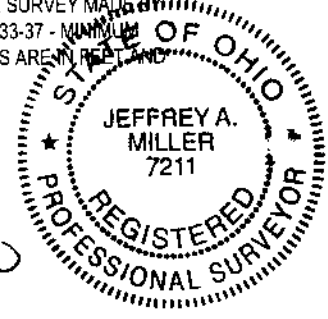
Curve table				
Curve	Radius	Arc Length	Chord	Delta Angle
C1	650.00'	198.39'	N84° 59' 39"E, 197.62'	17° 29' 15"
C2	700.00'	209.73'	N67° 40' 02"E, 208.94'	17° 09' 59"
C3	700.00'	186.69'	N51° 26' 37"E, 186.14'	15° 16' 51"
C4	700.00'	88.25'	N40° 11' 30"E, 88.19'	7° 13' 23"
C5	95.00'	89.08'	S27° 44' 11"E, 85.85'	53° 43' 26"
C6	700.00'	396.42'	N60° 01' 36"E, 391.14'	32° 26' 50"



**BASIS OF BEARING**  
BEARINGS ARE BASED ON THE OHIO STATE PLANE COORDINATE SYSTEM PER NAD83 SOUTH ZONE (1986 ADJUSTMENT). CONTROL FOR BEARINGS WAS FROM COORDINATES OF MONUMENTS FCGS 2270 (RESET) & FCGS 4452 (RESET), HAVING A BEARING OF NORTH 04° 44' 36" EAST, AS ESTABLISHED BY THE FRANKLIN COUNTY ENGINEERING DEPARTMENT.

I HEREBY CERTIFY THAT THIS DRAWING REPRESENTS A TRUE AND COMPLETE SURVEY MADE BY ME OR UNDER MY SUPERVISION OF OHIO ADMINISTRATIVE CODE CHAPTER 4733-37 - MINIMUM STANDARDS FOR BOUNDARY SURVEY IN THE STATE OF OHIO. ALL DIMENSIONS ARE IN FEET AND DECIMAL PARTS THEREOF.

THE FIELDWORK WAS COMPLETED IN MAY OF 2019.



**MONUMENT LEGEND**

- 5/8"x30" REBAR W/ YELLOW CAP STAMPED "CESO" SET
- △ MAG NAIL SET
- ⊙ REBAR FOUND
- MONUMENT FOUND

<b>1.036 ACRE &amp; 0.983 ACRE LOT SPLIT</b>	
CITY OF CANAL WINCHESTER	FRANKLIN COUNTY, OHIO
SCALE: 1"=50'	DATE: 5/15/2020
DESIGN: N/A	JOB NO.: 756756
DRAWN: ALB	SHEET NO.:
CHECKED: JAM	<b>CESO</b> WWW.CESOINC.COM
	1 OF 1

JEFFREY MILLER CHIN P.S. NO 7211  
jeff.miller@cesoinc.com  
DATE: 5-18-20