



Evans, Mechwart, Hambleton & Tilton, Inc.
 Engineers • Surveyors • Planners • Scientists
 5500 New Albany Road, Columbus, OH 43054
 Phone: 614.775.4500 Toll Free: 888.775.3648

emht.com

SURVEY OF ACREAGE PARCEL

SURVEY NUMBER 1393

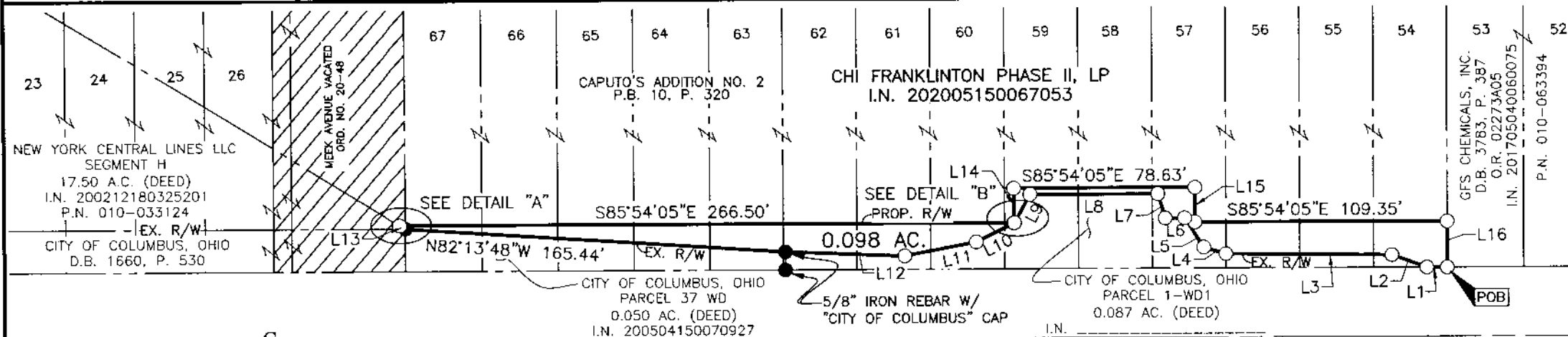
VIRGINIA MILITARY DISTRICT

CITY OF COLUMBUS, COUNTY OF FRANKLIN, STATE OF OHIO

Date: May 15, 2020

Scale: 1" = 60'

Job No: 2018-0199



McKINLEY AVENUE (60')

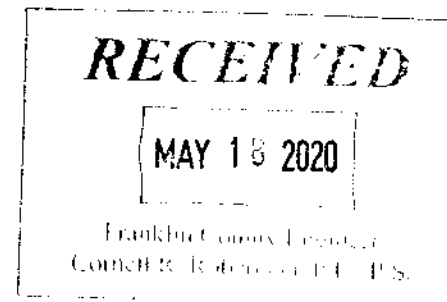
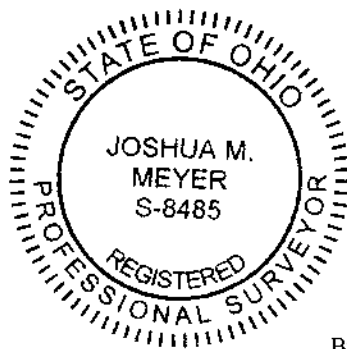
- = STONE FND.
- = MON. FND.
- = I.P. FND.
- = I.P. SET
- = MAG. NAIL FND.
- = MAG. NAIL SET
- ▲ = R.R. SPK. FND.
- ◆ = P.K. NAIL FND.

I.P. Set are 13/16" I.D. iron pipes 30" long with cap inscribed EMHT INC.



GRAPHIC SCALE (in feet)

See Sheet 2 of 2 for:
 Basis of Bearings
 Survey Note
 Line Table
 Details A and B



By Joshua M. Meyer Date 5-18-2020
 Professional Surveyor No. 8485



Evans, Mechwart, Hambleton & Tilton, Inc.
 Engineers • Surveyors • Planners • Scientists
 5500 New Albany Road, Columbus, OH 43054
 Phone: 614.775.4500 Toll Free: 888.775.3648
 emht.com

SURVEY OF ACREAGE PARCEL

SURVEY NUMBER 1393

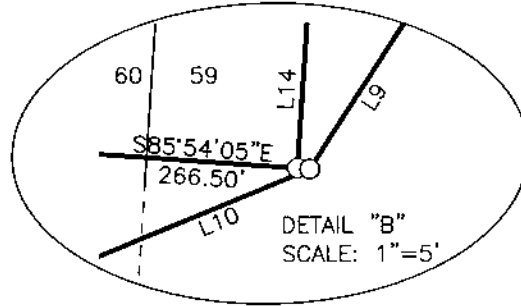
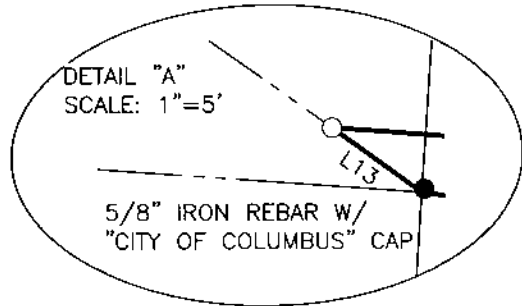
VIRGINIA MILITARY DISTRICT

CITY OF COLUMBUS, COUNTY OF FRANKLIN, STATE OF OHIO

Date: May 15, 2020

Scale: 1" = 5'

Job No: 2018-0199

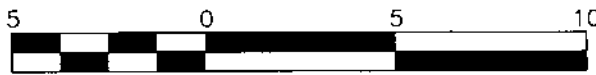


LINE TABLE		
LINE	BEARING	DISTANCE
L1	N85°54'05"W	8.89'
L2	N66°06'28"W	16.08'
L3	N85°18'24"W	72.22'
L4	N68°55'49"W	9.82'
L5	N28°55'30"W	15.19'
L6	N85°58'19"W	8.46'
L7	N12°48'48"W	11.01'
L8	N85°58'19"W	55.39'

LINE TABLE		
LINE	BEARING	DISTANCE
L9	S32°55'55"W	13.98'
L10	S67°40'26"W	18.43'
L11	S83°14'30"W	31.42'
L12	N83°39'56"W	51.93'
L13	N54°41'50"W	2.89'
L14	N04°05'55"E	15.00'
L15	S04°05'55"W	15.00'
L16	S04°00'57"W	20.00'

- = STONE FND.
- = MON. FND.
- = I.P. FND.
- = I.P. SET
- = MAG. NAIL FND.
- = MAG. NAIL SET
- ▲ = R.R. SPK. FND.
- = P.K. NAIL FND.

I.P. Set are 13/16" I.D. iron pipes
 30" long with cap inscribed EMHT INC.



GRAPHIC SCALE (in feet)

BASIS OF BEARINGS:

The bearings shown hereon are based on the Ohio State Plane Coordinate System, South Zone, NAD83 (2007). Control for bearings was from coordinates of monuments "COC 13-83" and "COC 1-83", having a bearing of North 72° 45' 54" East, as established by the Franklin County Engineering Department using Global Positioning System procedures and equipment.

SURVEY NOTE:

This survey was prepared using documents of record, prior plats of survey, and observed evidence located by an actual field survey performed by or under the direct supervision of Joshua M. Meyer, Registered Surveyor Number 8485 in September 2018.

