



# SURVEY OF A 2.233 ACRE TRACT

SITUATE IN THE STATE OF OHIO, COUNTY OF FRANKLIN, TOWNSHIP OF PLEASANT,  
BEING A PART OF VIRGINIA MILITARY SURVEY NO. 1448

## RECEIVED

JUN 15 2020

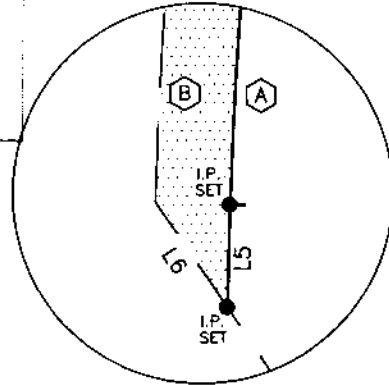
Franklin County Engineer  
Cornell R. Robertson, P.E., P.S.

GALLE B, LLC  
40.679 AC. TRACT  
I.N. 201803290041295



GRID NORTH

0 100 200  
SCALE IN FEET



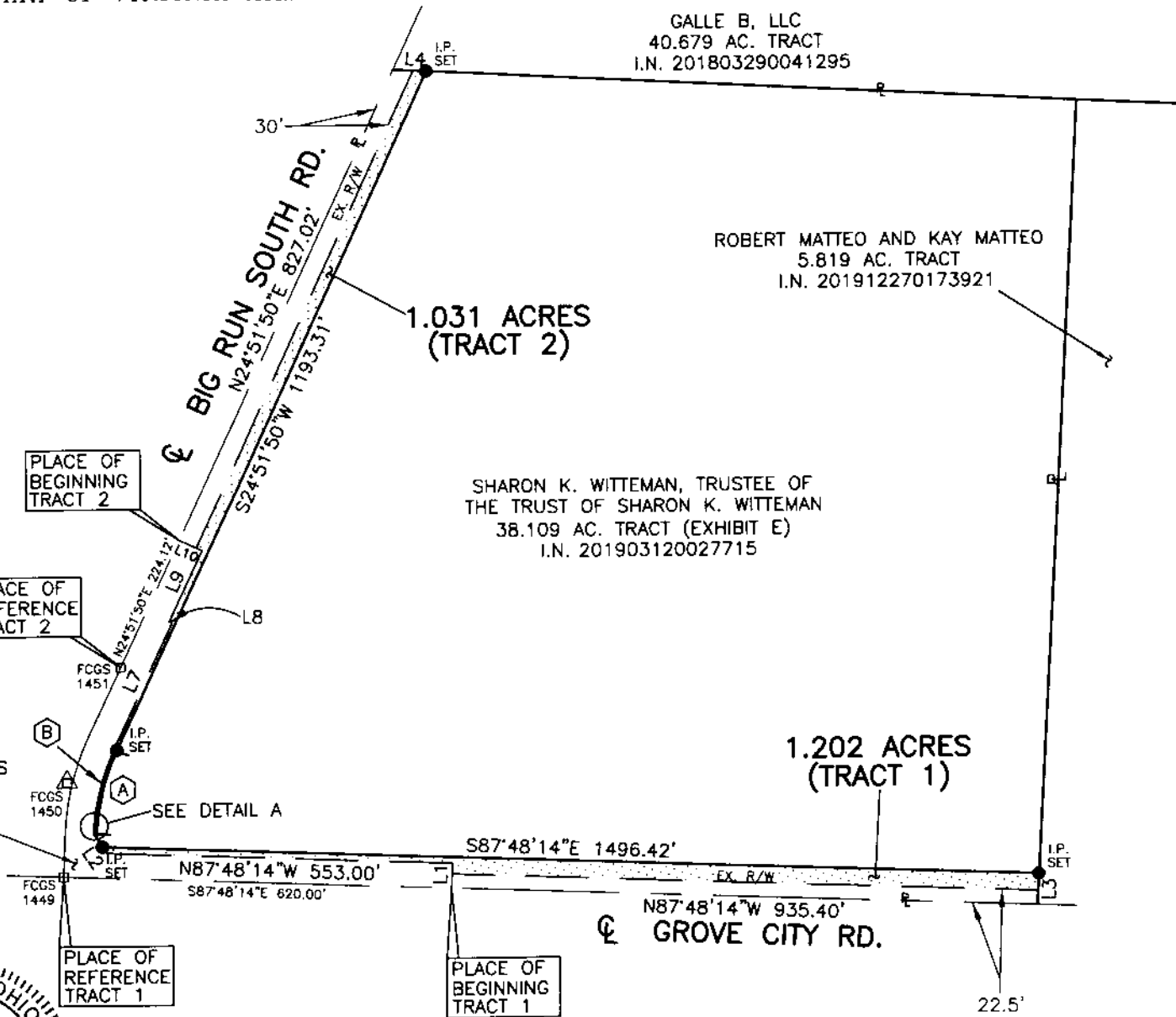
DETAIL A

0 5 10  
DETAIL SCALE IN FEET

### BEARING TABLE

Course	Bearing	Distance
L1	N02°11'46"E	40.00'
L2	N33°40'52"W	12.34'
L3	S03°05'53"W	50.01'
L4	S86°55'18"E	53.85'
L5	S02°11'32"W	6.91'
L6	N33°40'52"W	8.53'
L7	N24°51'50"E	221.30'
L8	N65°08'10"W	5.00'
L9	N24°51'50"E	125.00'
L10	N65°08'10"W	40.00'

CURVE A	CURVE B
$\Delta=22'40'18''$	$\Delta=22'40'18''$
R=350.01'	R=355.01'
L=138.50'	L=140.48'
T=70.17'	T=71.17'
CHD.BR.=S13°31'41"W	CHD.BR.=N13°31'41"E
CHD.=137.60'	CHD.=139.56'



ROBERT MATTEO AND KAY MATTEO  
5.819 AC. TRACT  
I.N. 201912270173921

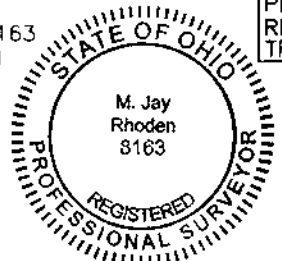
SHARON K. WITTEMAN, TRUSTEE OF  
THE TRUST OF SHARON K. WITTEMAN  
38.109 AC. TRACT (EXHIBIT E)  
I.N. 201903120027715

FRANKLIN COUNTY COMMISSIONERS  
1.891 AC. TRACT  
I.N. 200105150106528

### BASIS OF BEARINGS:

THE BEARINGS SHOWN HEREIN ARE BASED ON THE BEARING (N24°51'50"E),  
ALONG THE CENTERLINE OF BIG RUN SOUTH RD., AS SHOWN IN THE CENTERLINE  
SURVEY PLAT OF BIG RUN SOUTH RD., CO. RD. #258, ON RECORD IN THE  
FRANKLIN COUNTY ENGINEER'S OFFICE, FRANKLIN COUNTY, OHIO.

THIS PLAT WAS PREPARED IN THE OFFICE OF THE FRANKLIN COUNTY  
ENGINEER BY M. JAY RHODEN, P.S. OHIO REGISTERED SURVEYOR NO. 8163  
FROM AN ACTUAL FIELD SURVEY PERFORMED IN JUNE, 2020, AND FROM  
DEEDS AND PLATS OF RECORD IN THE RECORDER'S OFFICE, FRANKLIN  
COUNTY, OHIO.



M. Jay Rhoden  
OHIO REGISTERED SURVEYOR NO. 8163

06-17-2020  
DATE

### LEGEND

- 2.233 ACRES TO BE ACQUIRED

NOTE  
IRON PINS SET ARE 5/8" REBAR WITH PLASTIC  
CAPS STAMPED "FRANKLIN COUNTY ENGINEER".

DATE: 06-15-2020	DRAWING: 0261 BIG RUN SOUTH	
	DRAWN BY: MBR	
REVISIONS		
DATE	DESCRIPTION	BY