

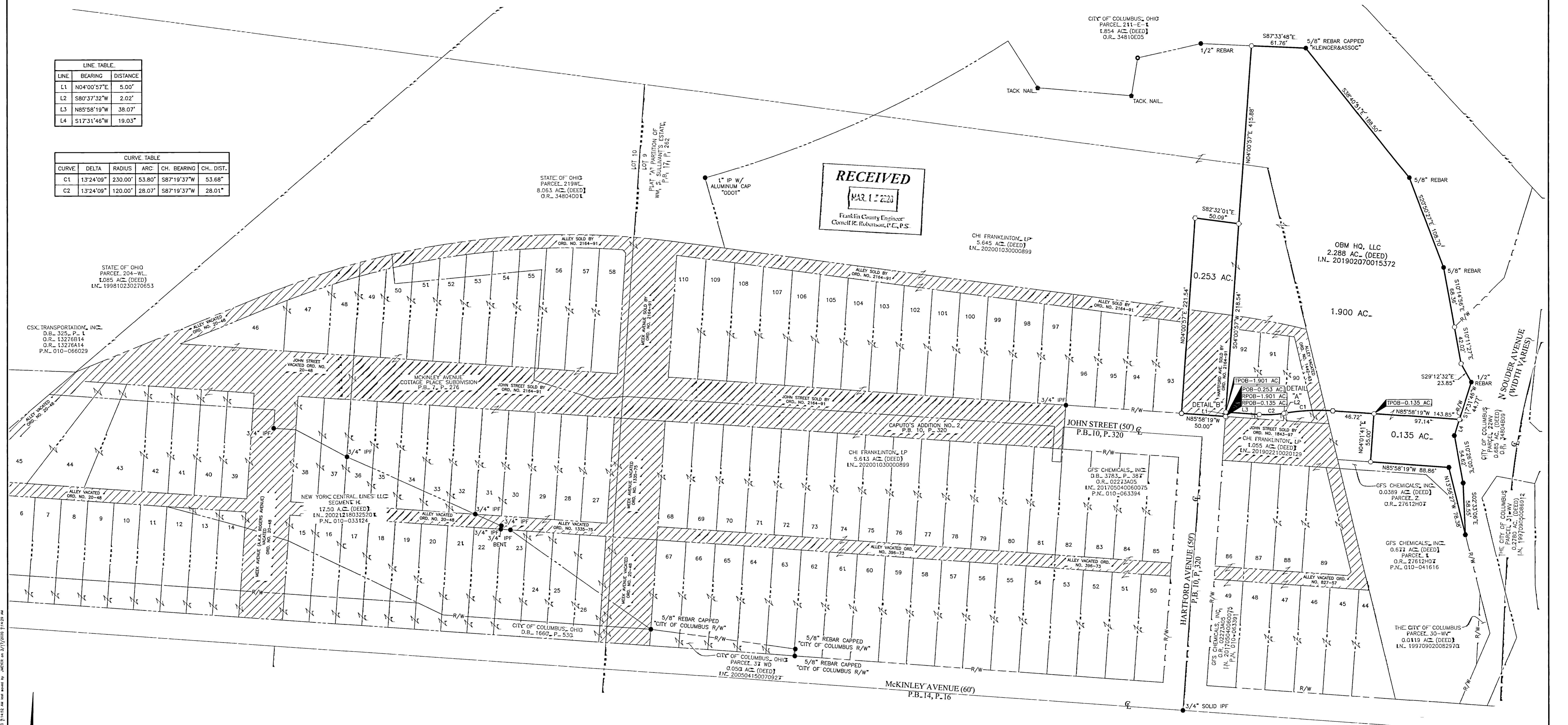
SURVEY OF ACREAGE PARCEL

VIRGINIA MILITARY DISTRICT SURVEY NUMBER 1393

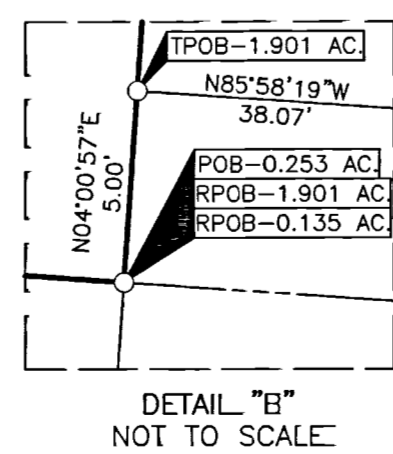
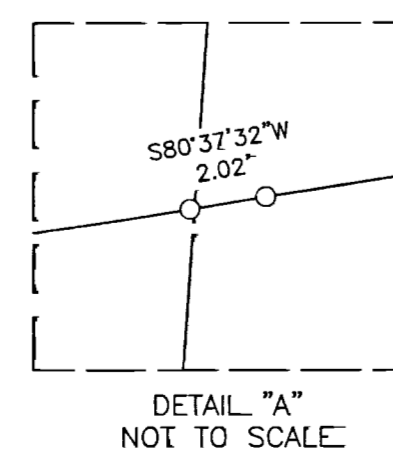
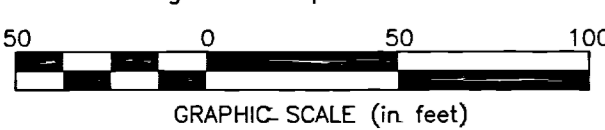
CITY OF COLUMBUS, COUNTY OF FRANKLIN, STATE OF OHIO

LINE	BEARING	DISTANCE
L1	N04°00'57"E	5.00'
L2	S80°37'32"W	2.02'
L3	N85°58'19"W	38.07'
L4	S17°31'46"W	19.03'

CURVE	DELTA	RADIUS	ARC	CH. BEARING	CH. DIST.
C1	13°24'09"	230.00'	53.80'	S87°19'37"W	53.68"
C2	13°24'09"	120.00'	28.07'	S87°19'37"W	28.01"



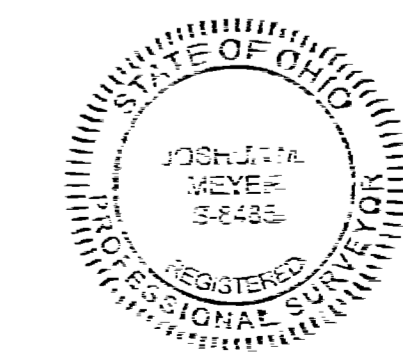
- = DRILL HOLE FND.
 - = MON. FND.
 - = I.P. FND.
 - = I.P. SET
 - = MAG. NAIL FND.
 - = MAG. NAIL SET
 - △ = R.R. SPK. FND.
 - △ = R.R. SPK. SET
 - = P.K. NAIL FND.
- I.P. Set are 13/16" I.D. iron pipes 30" long with cap inscribed EMHT INC.



SURVEY NOTE:
This survey was prepared using documents of record, prior plats of survey, and observed evidence located by an actual field survey in September 2018.

▨ = Vacated Roadway

BASIS OF BEARINGS:
The bearings shown hereon are based on the Ohio State Plane Coordinate System, South Zone, NAD83 (2007). Control for bearings was from coordinates of monuments "COC1-83" and "COC1-83", having a bearing of North 72° 45' 54" East, as established by the Franklin County Engineering Department using Global Positioning System procedures and equipment.



By *JM Meyer* 3-10-2020
Joshua M. Meyer
Professional Surveyor No. 8485

EMHT		Date: March 10, 2019
Evans, Mechwart, Hamilton & Tilton, Inc. Engineers • Surveyors • Planners • Scientists 5500 New Albany Road, Columbus, OH 43054 Phone: 614.775.4500 Toll Free: 888.775.3648 emht.com		Scale: 1" = 50'
		Job No: 2018-1181
		Sheet: 1 of 1
REVISIONS		
MARK	DATE	DESCRIPTION