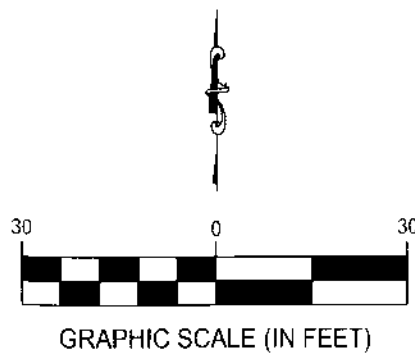


K-1-B

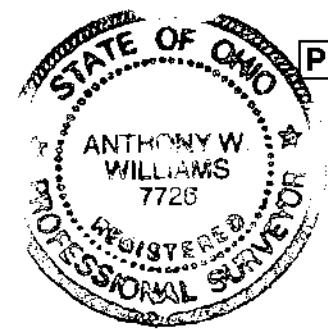
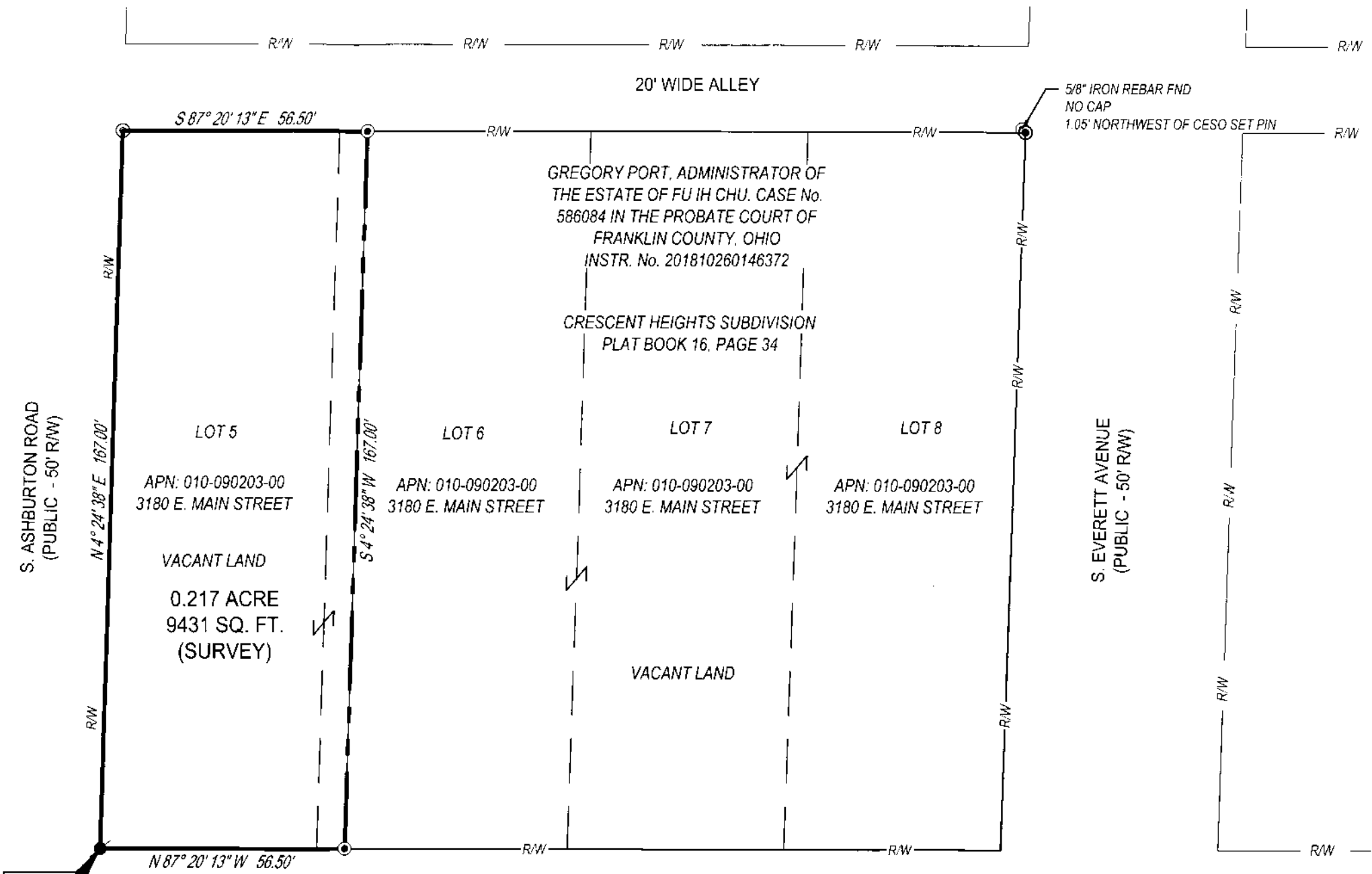
LOT SPLIT

STATE OF OHIO, COUNTY OF FRANKLIN, CITY OF COLUMBUS
PART OF LOTS 6 THRU 8 OF THE CRESCENT HEIGHTS SUBDIVISION



MONUMENT LEGEND

- 5/8"x30" REBAR W/ YELLOW CAP STAMPED "CESO" SET
- ⊙ IRON PIN FOUND
- MAG NAIL SET WITH "CESO" WASHER



P.O.B.

BASIS OF BEARING

THE BASIS OF BEARING IS BASED ON A BEARING OF NORTH 87°20'13" WEST FOR A PORTION OF THE NORTH RIGHT OF WAY LINE OF E. MAIN STREET AS DETERMINED BY GPS OBSERVATION USING ODOT VRS NETWORK, BASED ON NAD 83 (2011), OHIO STATE PLANE SOUTH ZONE.

12/30/2019
DATE

Anthony Williams
 ANTHONY WILLIAMS, OHIO PS NO 7726
 tony.williams@cesoinc.com

0.217 ACRE LOT SPLIT	
CITY OF COLUMBUS	FRANKLIN COUNTY, OHIO
SCALE: 1"=30'	DATE: 12/11/2019
DESIGN: N/A	JOB NO.: 756376
DRAWN: ALB	SHEET NO.: 1 OF 1
CHECKED: JAM	
 WWW.CESOINC.COM	