

SURVEYOR'S NOTES

- 1) BASED ON RECORDS ON FILE AT THE FRANKLIN & PICKAWAY COUNTY RECORDER'S OFFICE & COUNTY ENGINEER'S OFFICE.
- 2) REFERENCES: DOCUMENTS NOTED HEREON.
- 3) BEARINGS ARE BASED ON THE OHIO STATE PLANE COORDINATE SYSTEM - OHIO SOUTH ZONE (NAD83) BY GPS OBSERVATION, REFERENCED TO THE ODOT VRS NETWORK, WITH THE BEARING BETWEEN FCGS 0039 & FCGS 2259 BEING N 85°54'15" W
- 4) ALL IRON PINS SET ARE 3/4" INSIDE DIAMETER IRON PIPES, 30" IN LENGTH WITH A 1" DIAMETER YELLOW CAP STAMPED "NEWELL 7212"
- 5) BY NEW SURVEY, THE 56.147 ACRE TRACT AND THE 5.040 ACRE TRACT IS ALL THAT REMAINS OF PICKAWAY COUNTY PARCEL NUMBER F16-0-001-00-047-00 AND FRANKLIN COUNTY PARCEL NUMBER 182-000001-00.

- IRON PIN FOUND
- △ P.K. NAIL FOUND
- ▽ RAILROAD SPIKE FOUND
- △ FRANKLIN COUNTY MON.
- FENCE POST
- IRON PIN SET
- ▲ MAG NAIL SET

ACREAGE BREAKDOWN

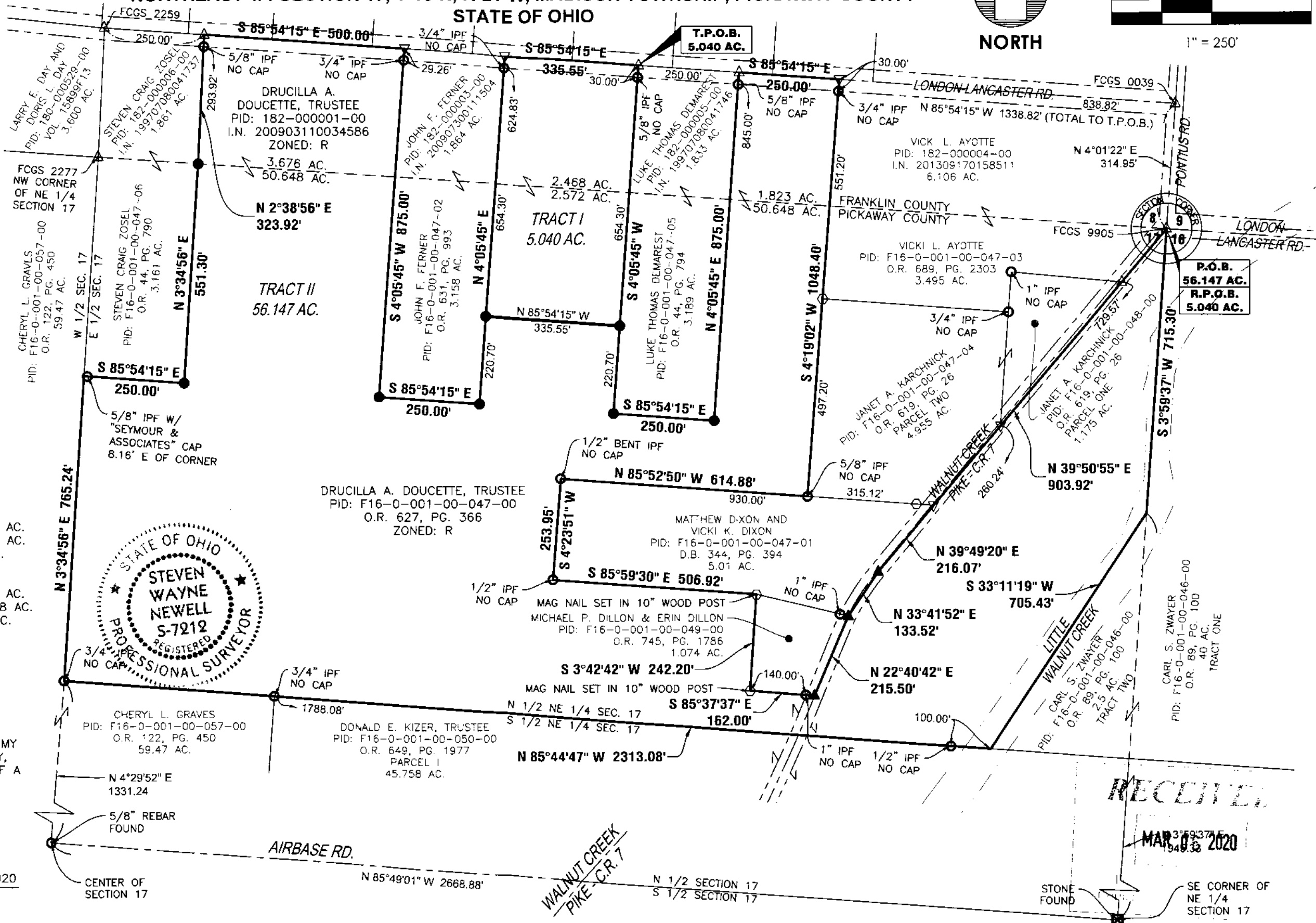
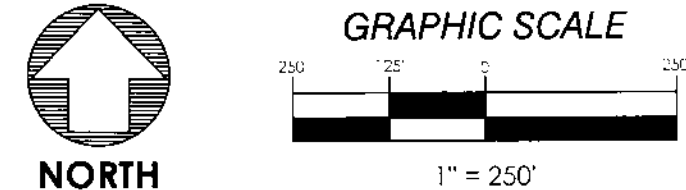
FRANKLIN COUNTY	TRACT I
TRACT I: 2.468 AC.	FRANKLIN: 2.468 AC.
TRACT II: 5.499 AC.	PICKAWAY: 2.572 AC.
TOTAL: 7.967 AC.	TOTAL: 5.040 AC.
PICKAWAY COUNTY	TRACT II
TRACT I: 2.572 AC.	FRANKLIN: 5.499 AC.
TRACT II: 50.648 AC.	PICKAWAY: 50.648 AC.
TOTAL: 53.220 AC.	TOTAL: 56.147 AC.
TOTAL ACREAGE: 61.187 AC.	

CERTIFICATION

THIS DRAWING IS REPRESENTATIVE OF AN ACTUAL FIELD SURVEY PERFORMED UNDER MY DIRECT SUPERVISION IN JANUARY-FEBRUARY, 2020. THIS DRAWING IS REPRESENTATIVE OF A BOUNDARY SURVEY IN CONFORMANCE WITH OAC 4733-37 STANDARDS FOR BOUNDARY SURVEYS.

Steven W. Newell
 STEVEN W. NEWELL
 OHIO PROFESSIONAL SURVEYOR 7212
 DATE 03/05/2020

SURVEY EXHIBIT OF DRUCILLA A. DOUCETTE TRACT
 SOUTHEAST 1/4 SECTION 8, T-10-N, R-21-W, MADISON TOWNSHIP, FRANKLIN COUNTY
 NORTHEAST 1/4 SECTION 17, T-10-N, R-21-W, MADISON TOWNSHIP, PICKAWAY COUNTY
 STATE OF OHIO



RECEIVED
 MAR 05 2020

SE CORNER OF NE 1/4 SECTION 17