

Z:\18-0167-128\DWG\PRODUCTION\DRAWINGS\SURVEY\updated 0167-128 Splits_0.384 Ac_1.102 Ac_2.005 Ac_9.091 Ac.dwg RW DROP Dec 11, 2019 - 9:20:40am jphelps

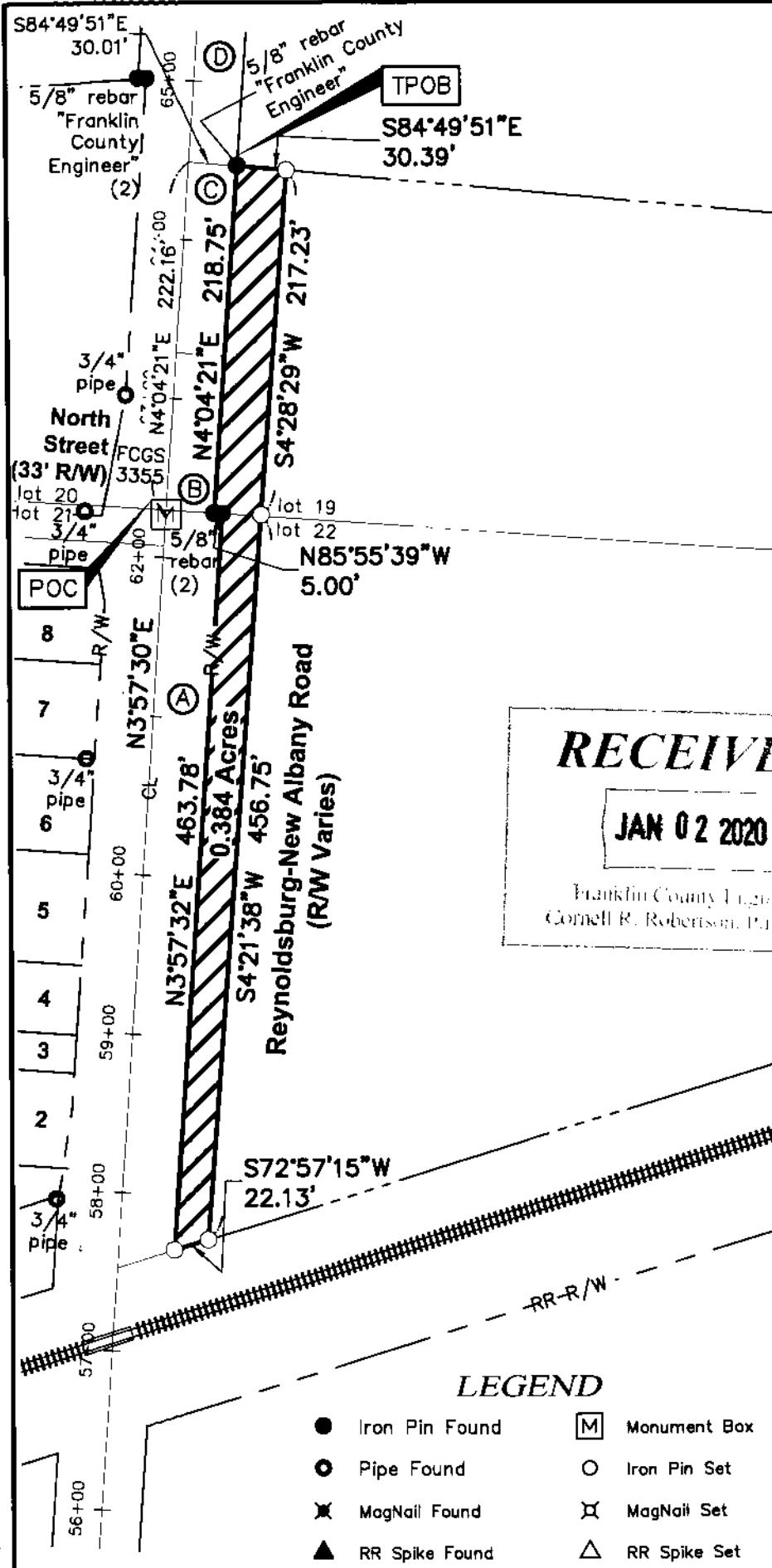
0.384 Acre Exhibit

Lots 19 & 22, Quarter Township 4,
Township 1, Range 16
United States Military District
Jefferson Township, Franklin County, Ohio

Kathleen M. Weber
P.N. 170-00092
I.N. 201510090143435
8.813 Acre (remainder)

The Jefferson Water
and Sewer District
P.N. 170-000531
O.R. 13814, Pg. D04
24.707 Acre

Gray's Point at Blacklick
Station LLC
P.N. 170-000208
I.N. 201909260126193
12.582 Acre

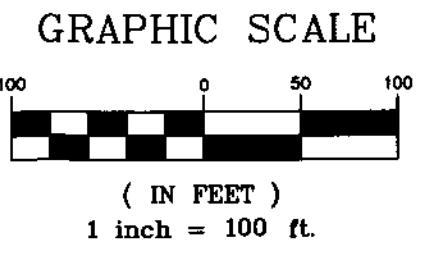


RECEIVED
JAN 02 2020
Franklin County Engineer
Cornell R. Robertson, P.L.L.P.S.

LEGEND

- Iron Pin Found
- Pipe Found
- ✕ MagNail Found
- ▲ RR Spike Found
- ◻ Monument Box
- Iron Pin Set
- ✕ MagNail Set
- △ RR Spike Set

Bearings are based on the Ohio State Plane Coordinate System, South Zone, NAD83 (NSRS2007). Said bearings were derived from GPS observation and determine a portion of the centerline of Reynoldsburg-New Albany Road having a bearing of N03°57'32"E.



OWNERSHIP INFORMATION

- Ⓐ County of Franklin
D.V. 3323, Pg. 614
0.378 Acres (28-WD)
- Ⓑ County of Franklin
D.V. 3325, Pg. 225
0.064 Acres (29-WD)
- Ⓒ County of Franklin
D.V. 3325, Pg. 219
0.107 Acres (30-WD)
- Ⓓ County of Franklin
D.V. 3323, Pg. 620
0.223 Acres (31-WD)

All iron pins set are 3/4" diameter, 30" long iron pipe with plastic cap inscribed "Advanced 7661".

This Survey is based on existing records from Franklin County, and from actual field survey work.

ADVANCED CIVIL DESIGN, INC.
Jonathan E. Phelps 12/11/19
Jonathan E. Phelps Date
Reg. No. 8241

DRAWN BY: JEP JOB NO.: 18-0167-128
DATE: 12/11/2019 CHECKED BY: JEP

ADVANCED CIVIL DESIGN ENGINEERS

422 Beecher Road
Gahanna, Ohio 43230
ph 614.428.7750
fax 614.428.7755