

I-6E  
I-9-B.



Evans, Mechwart, Hambleton & Tilton, Inc.  
Engineers • Surveyors • Planners • Scientists  
5500 New Albany Road, Columbus, OH 43054  
Phone: 614.775.4500 Toll Free: 888.775.3648  
emht.com

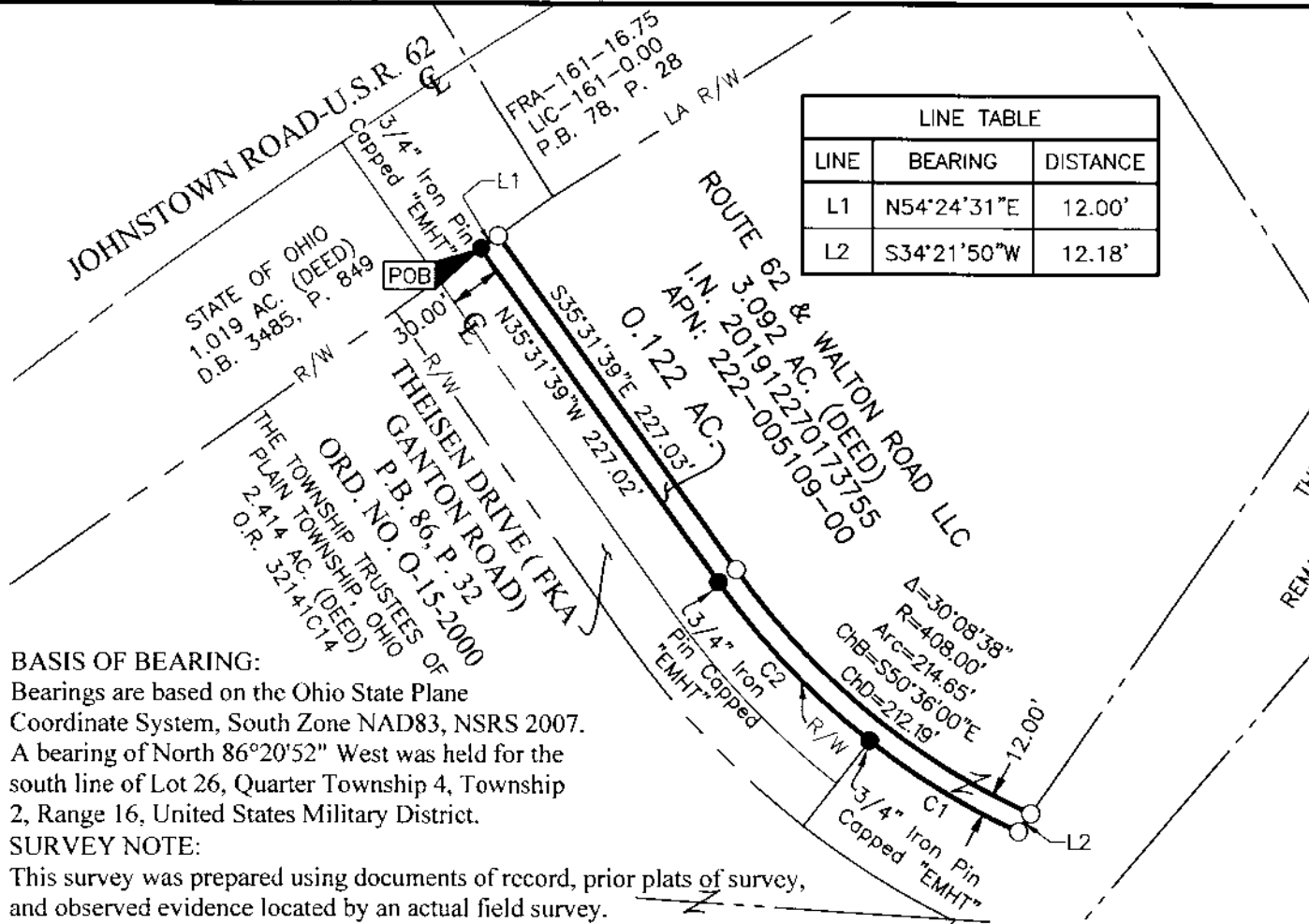
# SURVEY OF ACREAGE PARCEL

LOT 25, QUARTER TOWNSHIP 4, TOWNSHIP 2, RANGE 16  
UNITED STATES MILITARY DISTRICT  
CITY OF NEW ALBANY, COUNTY OF FRANKLIN, STATE OF OHIO

Date: February 10, 2020

Scale: 1" = 100'

Job No: 2019-0174



LINE TABLE		
LINE	BEARING	DISTANCE
L1	N54°24'31"E	12.00'
L2	S34°21'50"W	12.18'

CURVE TABLE					
CURVE	DELTA	RADIUS	ARC	CH. BEARING	CH. DIST.
C1	13°14'40"	420.00'	97.09'	N58°45'36"W	96.87'
C2	16°36'35"	420.00'	121.76'	N43°49'58"W	121.33'

- = STONE FND.
- = MON. FND.
- = I.P. FND.
- = I.P. SET
- = MAG. NAIL FND.
- = MAG. NAIL SET
- ▲ = R.R. SPK. FND.
- = P.K. NAIL FND.

I.P. Set are 13/16" I.D. iron pipes  
30" long with cap inscribed EMHT INC.



**BASIS OF BEARING:**  
Bearings are based on the Ohio State Plane  
Coordinate System, South Zone NAD83, NSRS 2007.  
A bearing of North 86°20'52" West was held for the  
south line of Lot 26, Quarter Township 4, Township  
2, Range 16, United States Military District.

**SURVEY NOTE:**  
This survey was prepared using documents of record, prior plats of survey,  
and observed evidence located by an actual field survey.

By John C. Dodgion 02/14/2020  
Professional Surveyor No. 8069 Date

J:\20190174\DWG\04SHEETS\BOUNDARY\20190174-VS-BNDY-01.DWG plotted by YOUSSEF, SHERRI on 2/10/2020 12:57:55 PM last saved by SYOUSSEF on 2/10/2020 12:57:33 PM  
Xrefs: 20190153-VS-BNDY-04.DWG & RW.DWG