

G-5-A



Evans, Machwar, Hambleton & Tilton, Inc.  
 Engineers • Surveyors • Planners • Scientists  
 5500 New Albany Road, Columbus, OH 43054  
 Phone: 614.775.4500 Toll Free: 888.775.3648  
 emht.com

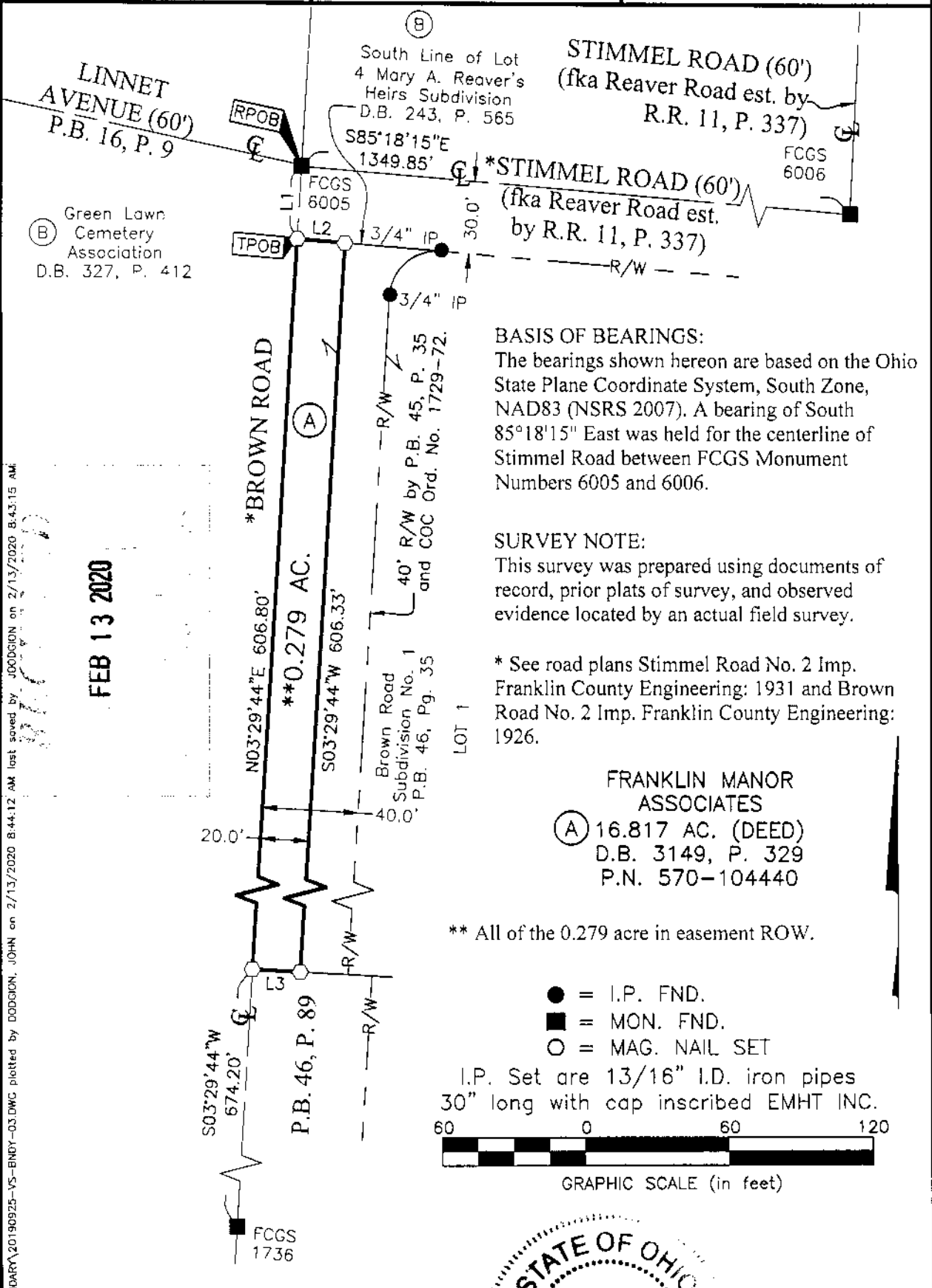
# SURVEY OF ACREAGE PARCEL

SURVEY NUMBER 717, VIRGINIA MILITARY DISTRICT  
 CITY OF COLUMBUS, COUNTY OF FRANKLIN, STATE OF OHIO

Date: February 11, 2020

Job No: 2019-0925

Scale: 1" = 60'



**BASIS OF BEARINGS:**  
 The bearings shown hereon are based on the Ohio State Plane Coordinate System, South Zone, NAD83 (NSRS 2007). A bearing of South 85°18'15" East was held for the centerline of Stimmel Road between FCGS Monument Numbers 6005 and 6006.

**SURVEY NOTE:**  
 This survey was prepared using documents of record, prior plats of survey, and observed evidence located by an actual field survey.

\* See road plans Stimmel Road No. 2 Imp. Franklin County Engineering: 1931 and Brown Road No. 2 Imp. Franklin County Engineering: 1926.

**FRANKLIN MANOR ASSOCIATES**  
 (A) 16.817 AC. (DEED)  
 D.B. 3149, P. 329  
 P.N. 570-104440

\*\* All of the 0.279 acre in easement ROW.

- = I.P. FND.
- = MON. FND.
- = MAG. NAIL SET

I.P. Set are 13/16" I.D. iron pipes 30" long with cap inscribed EMHT INC.



GRAPHIC SCALE (in feet)

FEB 13 2020

J:\20190925\DWG\04SHEETS\BOUNDARY\20190925-VS-BNDY-03.DWG plotted by DODGION, JOHN on 2/13/2020 8:44:12 AM last saved by DODGION, JOHN on 2/13/2020 8:43:15 AM

LINE TABLE		
LINE	BEARING	DISTANCE
L1	S03°29'44"W	30.01'
L2	S85°18'15"E	20.01'
L3	N86°38'37"W	20.00'

By John C. Dodgion Date 02/13/2020  
 Professional Surveyor No. 8069