

G-5-A-B



Evans, Mechwart, Hambleton & Tilton, Inc.
 Engineers • Surveyors • Planners • Scientists
 5500 New Albany Road, Columbus, OH 43054
 Phone: 614.775.4500 Toll Free: 888.775.3648

emht.com

SURVEY OF ACREAGE PARCEL

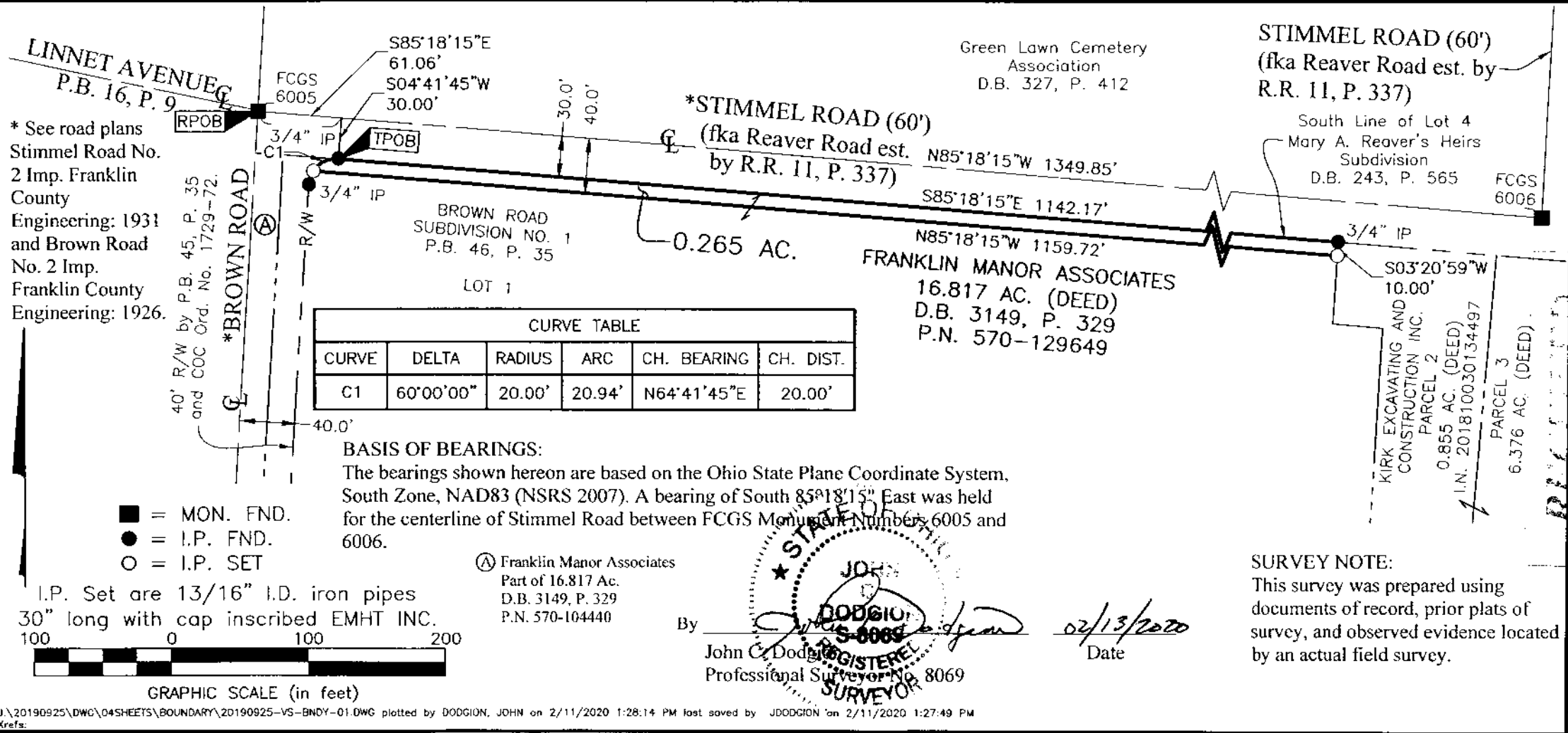
SURVEY NUMBER 717, VIRGINIA MILITARY DISTRICT

CITY OF COLUMBUS, COUNTY OF FRANKLIN, STATE OF OHIO

Date: February 7, 2020

Scale: 1" = 100'

Job No: 2019-0925



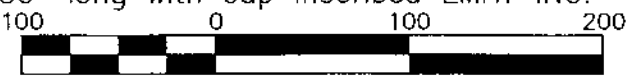
* See road plans
 Stimmel Road No.
 2 Imp. Franklin
 County
 Engineering: 1931
 and Brown Road
 No. 2 Imp.
 Franklin County
 Engineering: 1926.

CURVE TABLE					
CURVE	DELTA	RADIUS	ARC	CH. BEARING	CH. DIST.
C1	60°00'00"	20.00'	20.94'	N64°41'45"E	20.00'

BASIS OF BEARINGS:
 The bearings shown hereon are based on the Ohio State Plane Coordinate System, South Zone, NAD83 (NSRS 2007). A bearing of South 85°18'15" East was held for the centerline of Stimmel Road between FCGS Monument Numbers 6005 and 6006.

- = MON. FND.
- = I.P. FND.
- = I.P. SET

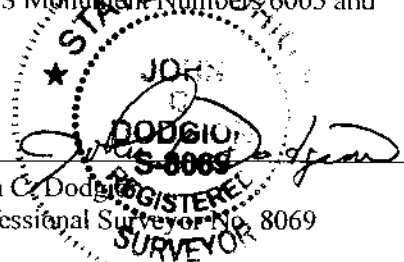
I.P. Set are 13/16" I.D. iron pipes
 30" long with cap inscribed EMHT INC.



GRAPHIC SCALE (in feet)

Ⓐ Franklin Manor Associates
 Part of 16.817 Ac.
 D.B. 3149, P. 329
 P.N. 570-104440

By John C. Dodgion
 Professional Surveyor No. 8069



02/13/2020
 Date

SURVEY NOTE:
 This survey was prepared using documents of record, prior plats of survey, and observed evidence located by an actual field survey.

FEB 13 2020