

FEB 21 2020

F-2-0



Evans, Mechwart, Hombleton & Tilton, Inc.
Engineers • Surveyors • Planners • Scientists
5500 New Albany Road, Columbus, OH 43054
Phone: 614.775.4500 Toll Free: 800.775.3648
emht.com

TOWNSHIP 1, QUARTER TOWNSHIP 3, RANGE 18
UNITED STATES MILITARY DISTRICT
CITY OF COLUMBUS, COUNTY OF FRANKLIN, STATE OF OHIO

Date: January 22, 2020

Job No: 2019-1099

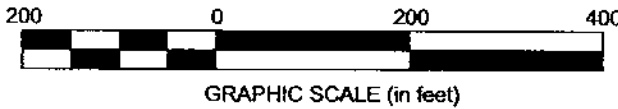
Scale: 1" = 200'

SURVEY NOTE:

This survey was prepared using documents of record, prior plats of survey, and observed evidence located by an actual field survey.

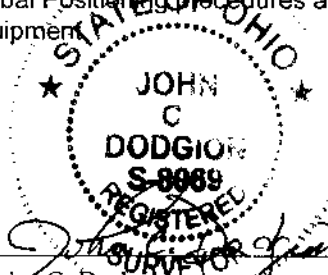
- = MON. FND.
- = I.P. FND.
- = I.P. SET
- = MAG. NAIL FND.

I.P. Set are 13/16" I.D. iron pipes 30" long with cap inscribed EMHT INC.



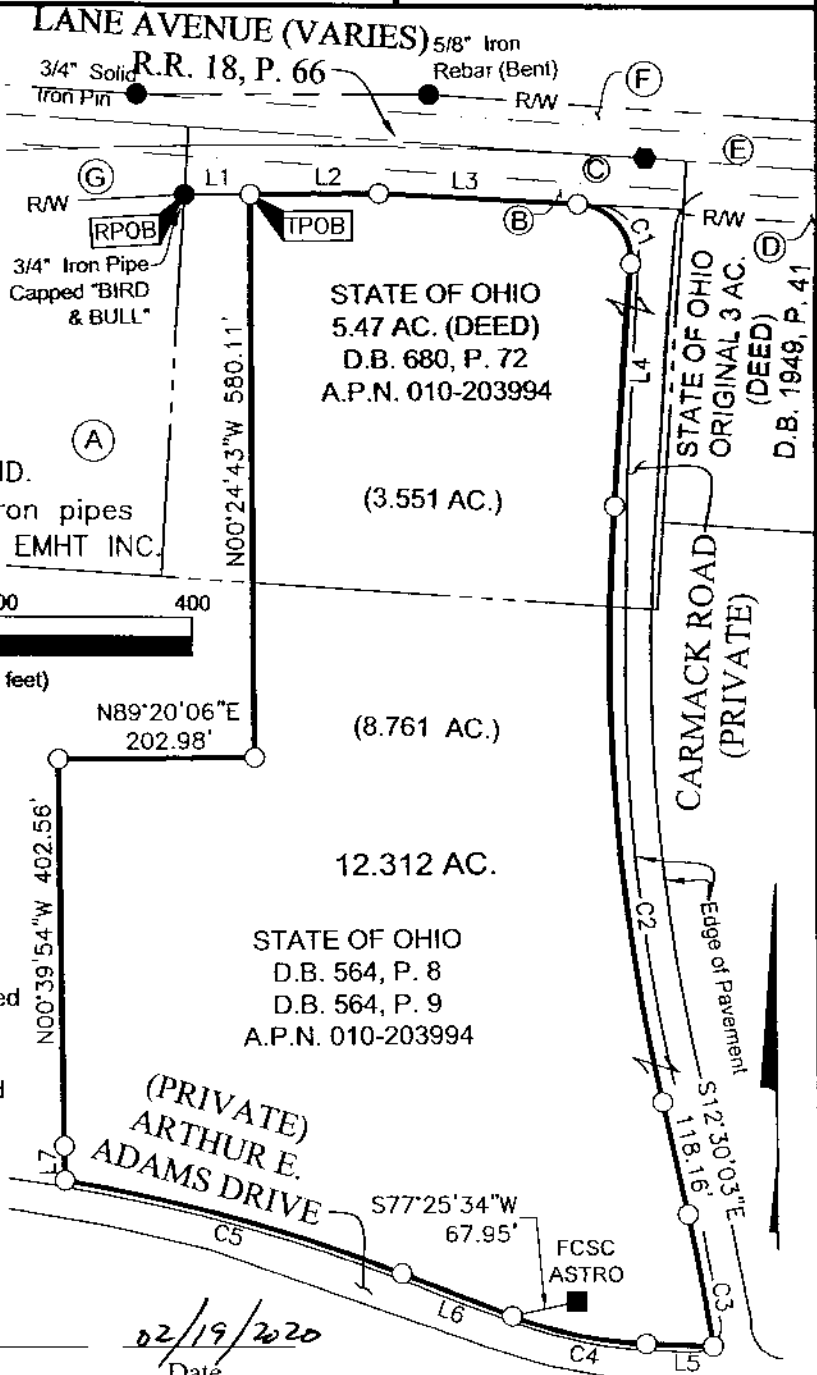
BASIS OF BEARINGS:

The bearings shown hereon are based on the Ohio State Plane Coordinate System South Zone per NAD83 (NSRS2007). Control for bearings was from coordinates of monuments RINGLE and COC 4-83 having a bearing of South 34° 13' 31" West, established by the Franklin County Engineering Department, using Global Positioning Procedures and equipment.



By *John C. Dodgion*
John C. Dodgion
Professional Surveyor No. 8069

02/19/2020
Date



I:\2019\1099\DWG\04\SHRETS\BOUNDARY\20191099-VS-BNDY-02A.DWG plotted by YOUSSEF, SHERRI on 2/14/2020 9:10:15 AM last saved by YOUSSEF on 2/13/2020 12:05:37 PM

FEB 21 2020

F-7-D

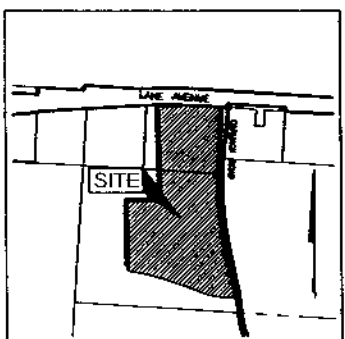


TOWNSHIP 1, QUARTER TOWNSHIP 3, RANGE 18
 UNITED STATES MILITARY DISTRICT
 CITY OF COLUMBUS, COUNTY OF FRANKLIN, STATE OF OHIO

Date: January 22, 2020 Job No: 2019-1099 Scale: 1" = 200'

- (A) STATE OF OHIO
3.90 ACRES (DEED)
D.B. 680, P. 73
- (B) EASEMENT FOR HIGHWAY PURPOSES
BOARD OF COUNTY COMMISSIONERS OF
FRANKLIN COUNTY, OHIO
ENGNRS. PARCEL NO. 9
D.B. 1895, P. 254
- (C) EASEMENT FOR HIGHWAY PURPOSES
FRANKLIN COUNTY, OHIO
PARCEL 5 0.353 AC. (DEED)
D.B. 1086, P. 614
- (D) EASEMENT FOR HIGHWAY PURPOSES
BOARD OF COUNTY COMMISSIONERS OF
FRANKLIN COUNTY, OHIO
ENGNRS. PARCEL NO. 10
D.B. 1847, P. 537
- (E) EASEMENT FOR HIGHWAY PURPOSES
FRANKLIN COUNTY, OHIO
PARCEL 1
D.B. 1086, P. 614
- (F) EASEMENT FOR HIGHWAY PURPOSES
BOARD OF COUNTY COMMISSIONERS OF
FRANKLIN COUNTY, OHIO
ENGNRS. PARCEL NO. 14
D.B. 1845, P. 254
- (G) EASEMENT FOR HIGHWAY PURPOSES
BOARD OF COUNTY COMMISSIONERS OF
FRANKLIN COUNTY, OHIO
ENGNRS. PARCEL NO. 8
D.B. 1895, P. 254

LINE TABLE		
LINE	BEARING	DISTANCE
L1	N89°23'20"E	67.57'
L2	N89°23'20"E	132.76'
L3	S87°13'58"E	204.36'
L4	S03°48'53"W	250.72'
L5	N87°52'23"W	68.76'
L6	N68°57'41"W	121.14'
L7	N00°39'54"W	35.20'



LOCATION MAP AND BACKGROUND DRAWING
NOT TO SCALE

CURVE TABLE					
CURVE	DELTA	RADIUS	ARC	CH. BEARING	CH. DIST.
C1	91°04'44"	57.42'	91.28'	S41°42'33"E	81.96'
C2	16°18'59"	2187.82'	623.03'	S04°20'35"E	620.93'
C3	3°45'16"	2091.10'	137.02'	S10°43'27"E	137.00'
C4	18°54'42"	425.84'	140.56'	N78°25'02"W	139.92'
C5	11°35'20"	1784.50'	360.94'	N74°46'51"W	360.32'

J:\2018\1099\DWG\945\SHEETS\BOUNDARY\20181099-VS-SNDY-D2A.DWG plotted by PHILPOTT, ANDREW on 1/22/2020 9:13:48 AM last saved by AP-ILPOTT on 1/22/2020 8:12:41 AM