

FEB 21 2020

F-3-D

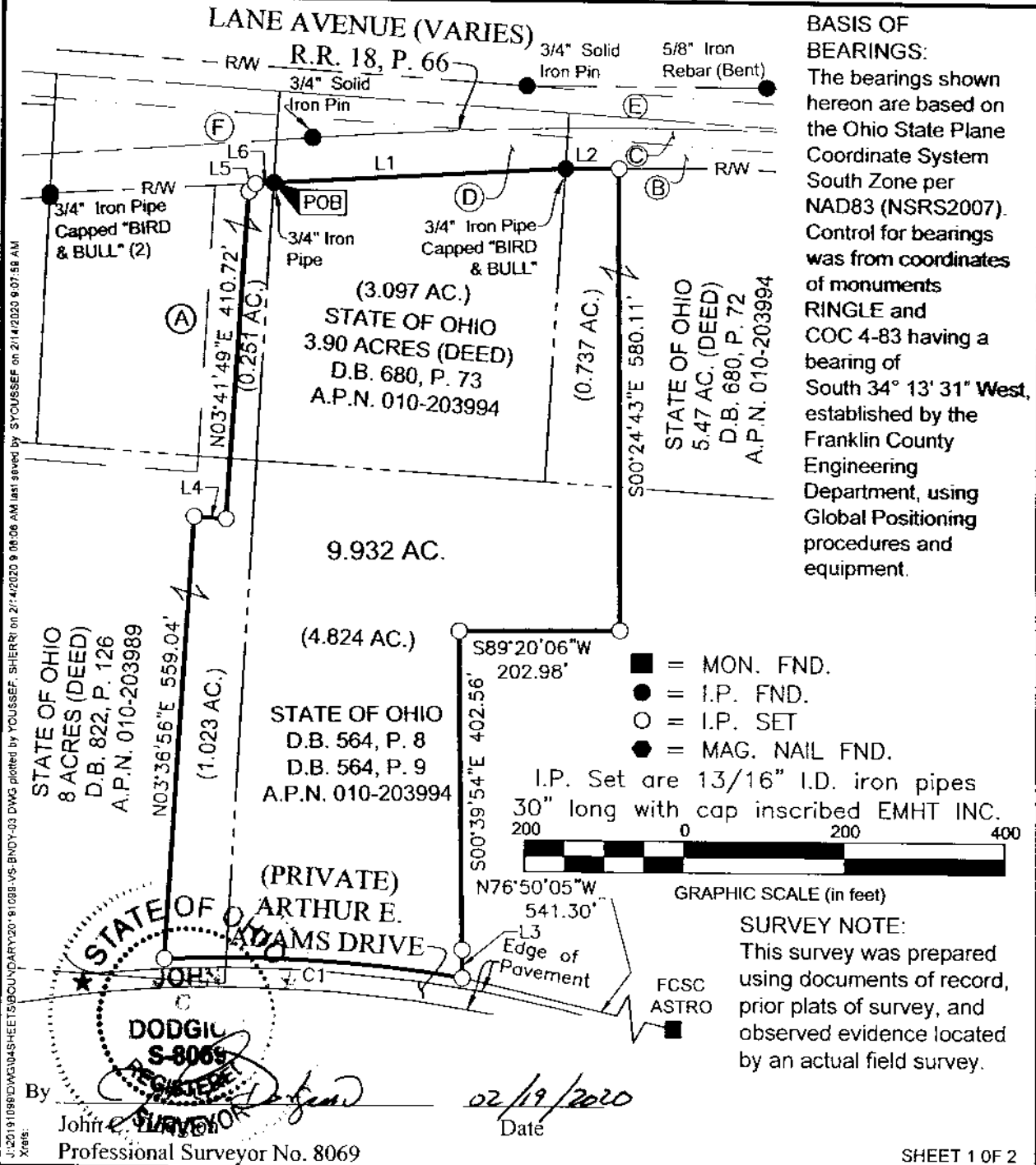


TOWNSHIP 1, QUARTER TOWNSHIP 3, RANGE 18
UNITED STATES MILITARY DISTRICT
CITY OF COLUMBUS, COUNTY OF FRANKLIN, STATE OF OHIO

Date: February 03, 2020

Job No: 2019-1099

Scale: 1" = 200'



J:\2019\1099\DWG\304SHEETS\BOUNDARY\2019\1099-VS-BNDY-03.DWG plotted by YOUSSEF, SHERRI on 2/14/2020 9:08:06 AM last saved by SYOUSSEF on 2/14/2020 9:07:58 AM

FEB 21 2020

EFF-D



TOWNSHIP 1, QUARTER TOWNSHIP 3, RANGE 18
 UNITED STATES MILITARY DISTRICT
 CITY OF COLUMBUS, COUNTY OF FRANKLIN, STATE OF OHIO

Date: February 03, 2020 Job No: 2019-1099 Scale: 1" = 200'

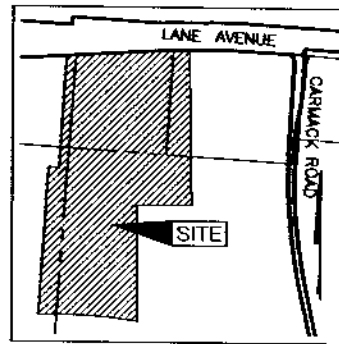
- (A) STATE OF OHIO
3 ACRES (DEED)
D.B. 822, P. 126
A.P.N. 010-203994
- (E) EASEMENT FOR HIGHWAY PURPOSES
FRANKLIN COUNTY, OHIO
PARCEL 1
D.B. 1086, P. 614

- (B) EASEMENT FOR HIGHWAY PURPOSES
BOARD OF COUNTY COMMISSIONERS OF
FRANKLIN COUNTY, OHIO
ENGNRS. PARCEL NO. 9
D.B. 1895, P. 254

- (C) EASEMENT FOR HIGHWAY PURPOSES
FRANKLIN COUNTY, OHIO
PARCEL 5 0.353 AC. (DEED)
D.B. 1086, P. 614

- (D) EASEMENT FOR HIGHWAY PURPOSES
BOARD OF COUNTY COMMISSIONERS OF
FRANKLIN COUNTY, OHIO
ENGNRS. PARCEL NO. 8
D.B. 1895, P. 254

- (F) EASEMENT FOR HIGHWAY PURPOSES
BOARD OF COUNTY COMMISSIONERS OF
FRANKLIN COUNTY, OHIO
ENGNRS. PARCEL NO. 7
D.B. 1895, P. 254



LOCATION MAP AND BACKGROUND DRAWING
NOT TO SCALE

LINE TABLE		
LINE	BEARING	DISTANCE
L1	N86°39'07"E	366.88'
L2	N89°23'20"E	67.57'
L3	S00°39'54"E	35.20'
L4	S86°19'38"E	40.27'
L5	N39°19'26"E	13.22'
L6	N86°35'57"E	22.91'

CURVE TABLE					
CURVE	DELTA	RADIUS	ARC	CH. BEARING	CH. DIST.
C1	12°07'46"	1769.41'	374.58'	N86°44'36"W	373.88'

J:\2019\1099\BOUNDARY\2019-1099-VS-BNDY-03.DWG plotted by PHILIPOTT, ANDREW on 2/3/2020 12:54:39 PM last saved by PHILIPOTT on 2/3/2020 12:54:11 PM