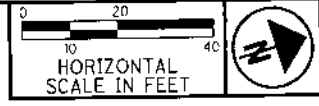


6-5-2



LEGEND

- ⊙ EXISTING CONCRETE HIGHWAY MONUMENT FOUND
- A.F. IRON PIN FOUND (AS NOTED)
- I.A.S. IRON PIN SET, 5/8" REBAR, 30" LONG WITH AN ORANGE PLASTIC CAP STAMPED "IBI GROUP, S-6872/S-7740"

BEARING REFERENCE

BEARINGS HEREIN ARE BASED ON THE OHIO STATE PLANE COORDINATE SYSTEM, SOUTH ZONE, NAD 83 (2011) AND GPS OBSERVATIONS OF THE FRANKLIN COUNTY GEODETIC CONTROL MONUMENTATION ESTABLISHING A BEARING OF S 87° 00' 32" E ON THE SOUTHERLY PROPERTY LINE OF SAID LOT 13 OF PLESENTON PLACE ADDITION NO. 2.

PAUL J. FILING III
O.R.V. 25413, PG. G16
1.224 ACRE
P.N. 250-000828
PARCEL 2

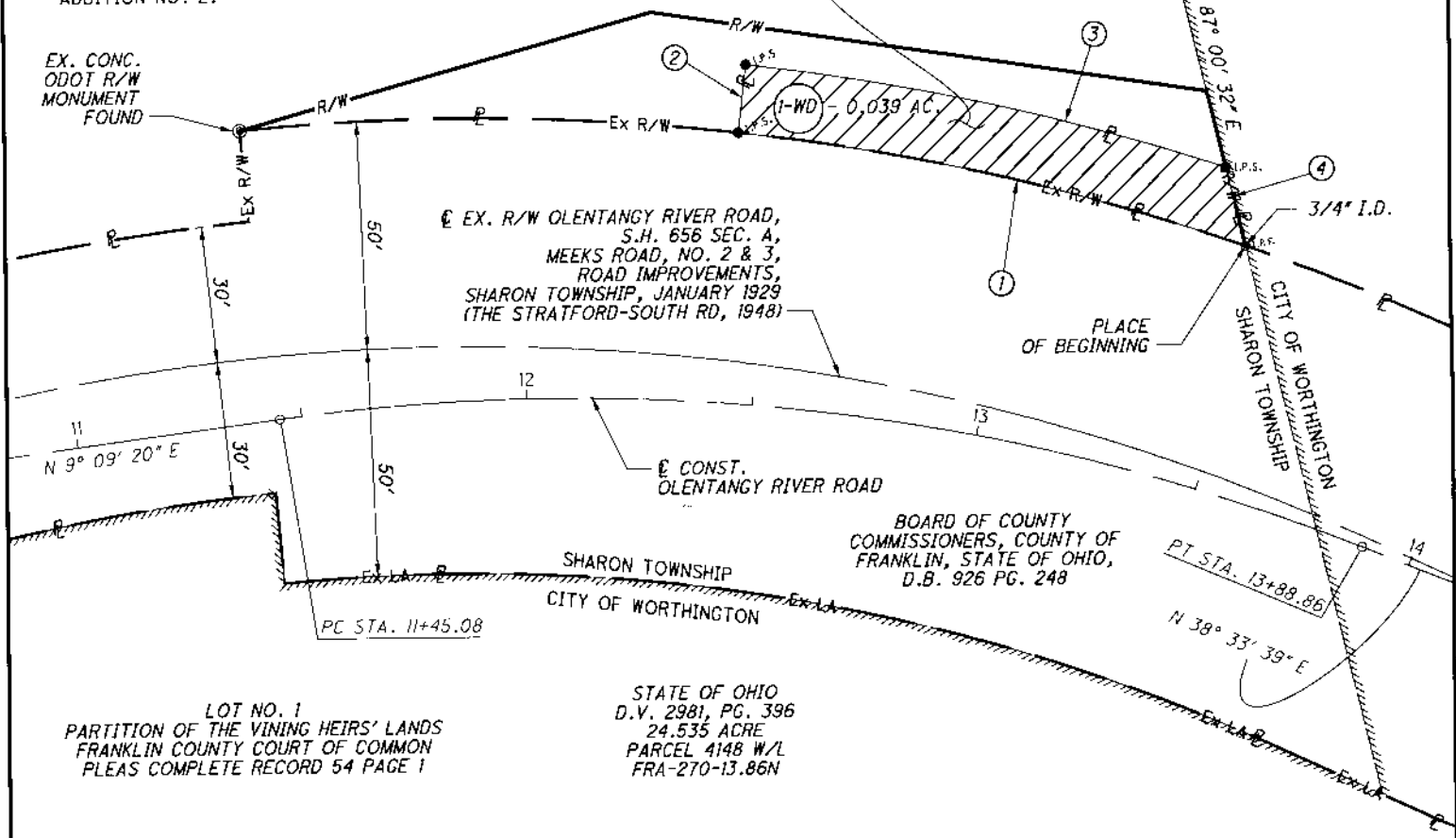
PLESENTON PLACE
ADDITION No. 2
P.B. 30, PG. 41

ALEXANDER BOBROV &
LAURA MILLER
I.N. 201504240053013
P.N. 100-005318
(PART OF LOT 13)

CHAD CRAMER
I.N. 201703030030086
(SEE I.N. 201802230025316)
0.419 ACRE
P.N. 100-006761
(PART OF LOT 13)

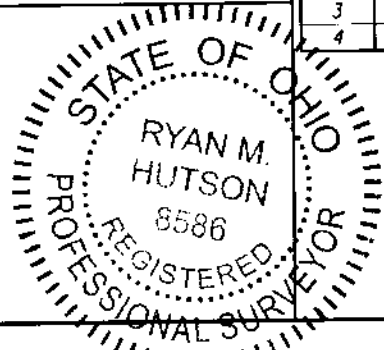
HERMAN P. JEFFERS (DEC'D)
D.B. 1018, PGS. 439, 441, AND 443
0.039 ACRE
(119.89 ACRES)

EX. CONC.
ODOT R/W
MONUMENT
FOUND



REF. NO.	BEARING	DISTANCE	REF. NO.	CHORD BEARING	CHORD DISTANCE	ARC DELTA	ARC RADIUS	ARC DISTANCE
1	ON CURVE	-	1	S 29° 39' 24" W	114.87'	12° 31' 35"	526.47'	115.10'
2	N 66° 36' 24" W	15.00'	2	-	-	-	-	-
3	ON CURVE	-	3	N 29° 08' 44" E	108.54'	11° 30' 16"	541.47'	108.72'
4	S 87° 00' 32" E	17.77'	4	-	-	-	-	-

SURVEYORS SEAL



Ryan M. Hutson
Ryan M. Hutson,
Professional Land Surveyor 8586

1-30-20
Date:

IBI GROUP
8101 North High Street, Suite 100
Columbus, OH 43235 USA
tel 614 818 4900 fax 614 818 4901
ibigroup.com

**EXHIBIT B
PARCEL 1-WD**
UNITED STATES MILITARY DISTRICT
QUARTER TOWNSHIP 3, TOWNSHIP 2 NORTH, RANGE 18 WEST
SHARON TOWNSHIP, COUNTY OF FRANKLIN, STATE OF OHIO

DATE: 1/30/2020
SCALE: 1" = 40'
1
1