

RECEIVED

FEB 19 2020

RIGHT-OF-WAY OF 0.152 ACRES  
SITUATED IN STATE OHIO, COUNTY OF FRANKLIN, CITY OF COLUMBUS,  
AND BEING IN QUARTER TOWNSHIP 4, TOWNSHIP 1, RANGE 18,  
UNITED STATES MILITARY LANDS

LEGEND

MAG NAIL SET - ● MNS  
IRON PIN SET - ○ IPS

NOTE:

IRON PINS SET, AS SHOWN ON PLAN AND IN THE ABOVE DESCRIPTION ARE 5/8 INCH STEEL ROD, THIRTY (30) INCHES LONG WITH A PLASTIC CAP STAMPED "RII".

MAG NAIL SET, WHERE INDICATED ARE MAGNETICALLY ENHANCED NAILS (ZINC PLATED) TWO AND ONE HALF (2-1/2") IN LENGTH BY ONE QUARTER INCH (1/4") HEAD.

BASIS OF BEARING:  
THE BEARINGS SHOWN HEREON ARE BASED ON THE OHIO STATE PLANE COORDINATE SYSTEM, SOUTH ZONE AS PER NAD 83 WITH AN ESTABLISHED BEARING OF S 80°10'17" E ON THE CENTERLINE OF HUDSON STREET.

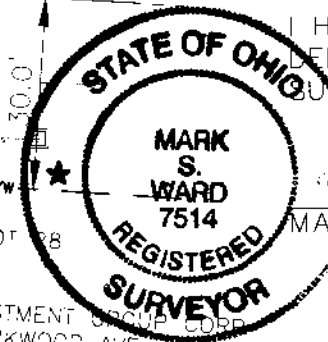
SURVEYED AND PLATTED BY:



RESOURCE INTERNATIONAL, INC.

SURVEYOR'S CERTIFICATE:

I HEREBY CERTIFY THAT THIS DRAWING IS A TRUE DELINEATION OF A SURVEY MADE UNDER MY DIRECT SUPERVISION IN SEPTEMBER 2018.



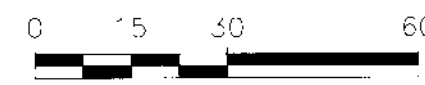
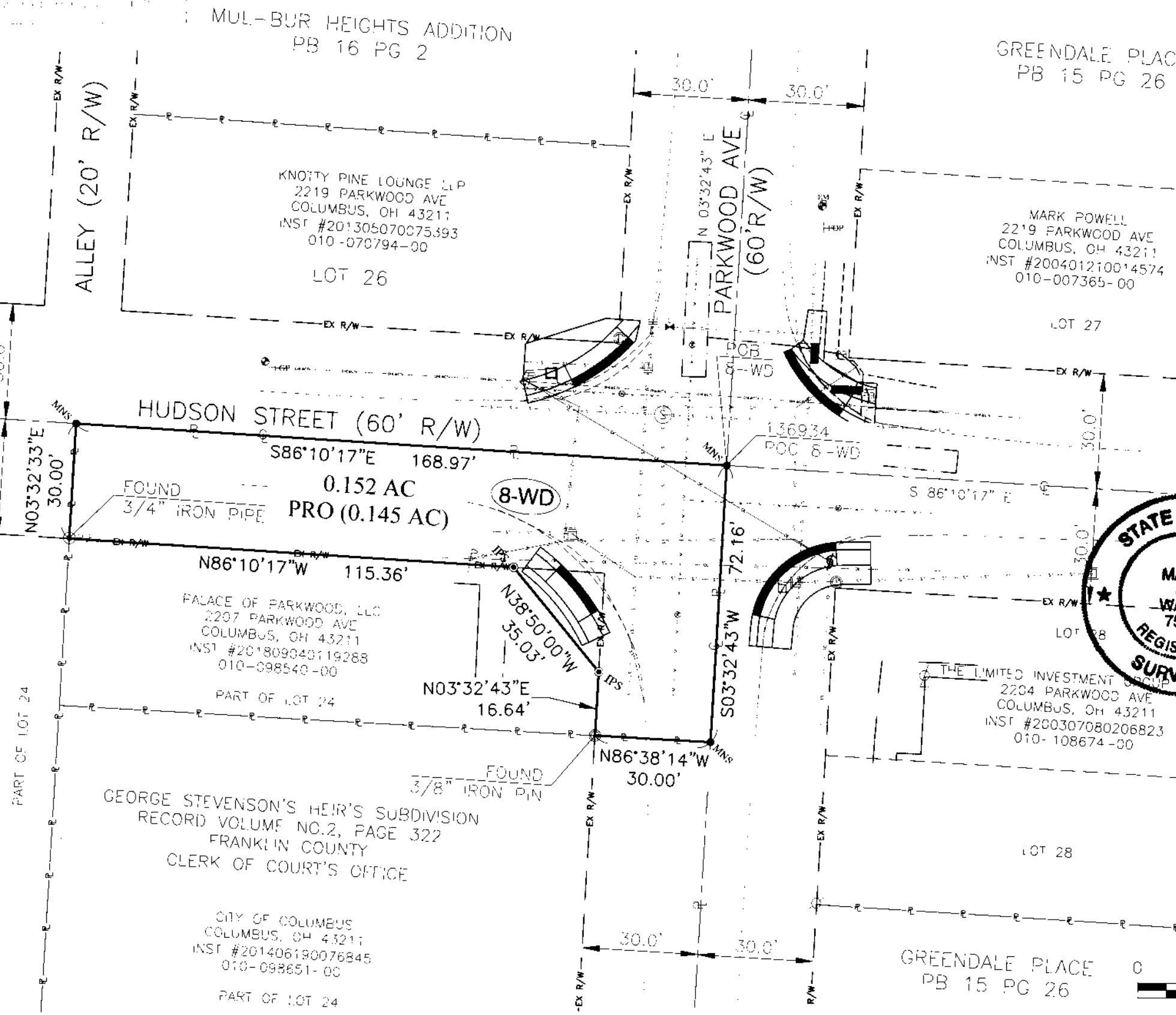
*Mark S. Ward* 2-19-2020  
MARK S. WARD P.S., S-7514 DATE

136934 8-WD

DESCRIPTION	<b>RIGHT-OF-WAY OF 0.152 ACRES</b>
LOCATION	<b>E HUDSON ST &amp; PARKWOOD AVE 2207 PARKWOOD AVE COLUMBUS, OH</b>
CLIENT	<b>E. L. ROBINSON ENGINEERING 1801 WATERMARK DR, SUITE 310 COLUMBUS, OH</b>
	<b>RESOURCE INTERNATIONAL, INC. 6350 PRESIDENTIAL GATEWAY COLUMBUS, OH 43231</b>

DRAWN BY <b>EJG</b>	CHECKED BY <b>MSW</b>	CREW CHIEF <b>KRJ</b>	PROJECT NO. <b>W18-114</b>	SHEET <b>1 OF 1</b>
SCALE <b>1" = 30'</b>	DATE <b>02-11-2020</b>			

COLUMBUS ELDERLY II LLC  
COLUMBUS, OH 43211  
INST #200908270125808  
010-098458-00



DATE: 02/11/2020 11:43:00 AM BY: MSW