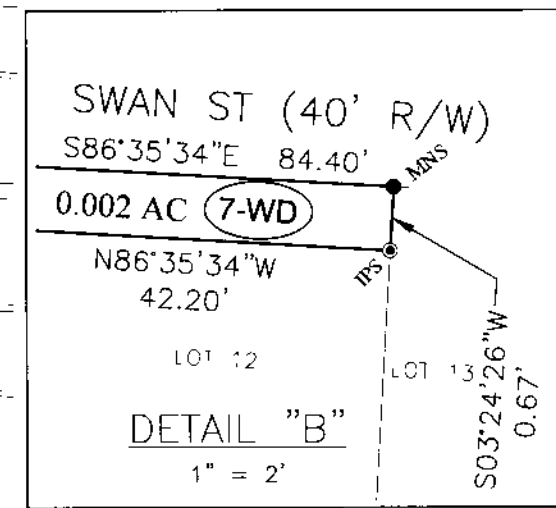
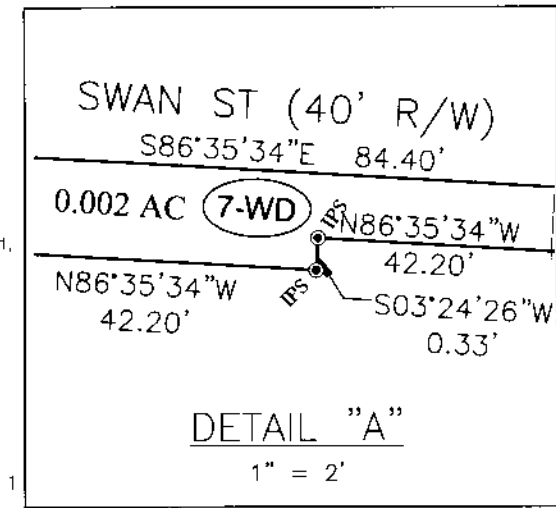
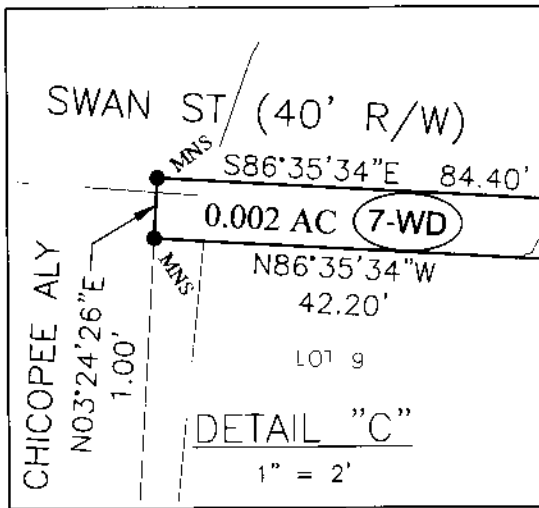



P:\DWG\DEPT9\Projects\018\W18-114.COC ADA Ramas-RW-ARCAS\cwg\Swan St-Chicopee A.y.dwg Saved on: 2/20/2020 1:5:38 AM Plot Date: 2020/02/20

RIGHT-OF-WAY OF 0.002 ACRES  
 SITUATED IN STATE OHIO, COUNTY OF FRANKLIN, CITY OF COLUMBUS AND  
 BEING PART OF A SUBDIVISION KNOWN AS, "ENGLISH AND MONYPENY'S  
 SUBDIVISION", PLAT BOOK 3, PAGE 18 LOCATED, IN HALF SECTION 10,  
 TOWNSHIP 5, RANGE 22, REFUGEE LANDS



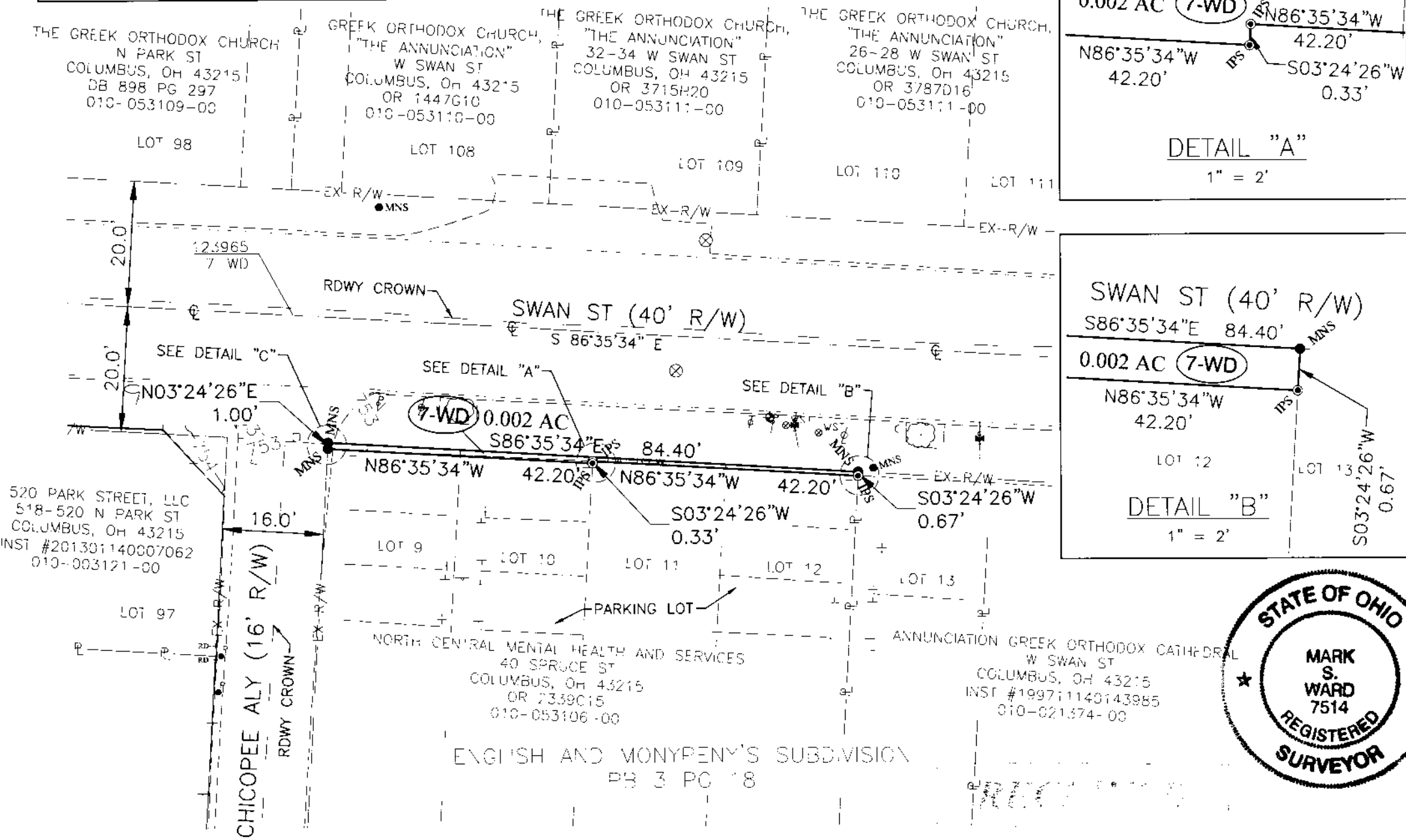
LEGEND  
 MAG NAIL SET ● MNS  
 IRON PIN SET ○ IPS  
 NOTE:  
 IRON PINS SET, AS SHOWN ON PLAN AND IN THE ABOVE DESCRIPTION ARE 5/8 INCH STEEL ROD, THIRTY (30) NOTCHES LONG WITH A PLASTIC CAP STAMPED "RI".  
 MAG NAIL SET, WHERE INDICATED ARE MAGNETICALLY ENHANCED NAILS (ZINC PLATED) TWO AND ONE HALF (2 1/2") IN LENGTH BY ONE QUARTER INCH (1/4") HEAD.

BASIS OF BEARING:  
 THE BEARINGS SHOWN HEREON ARE BASED ON THE OHIO STATE PLANE COORDINATE SYSTEM, SOUTH ZONE AS PER NAD 83 WITH AN ESTABLISHED BEARING OF S 86°35'34" E ON THE CENTERLINE OF SWAN STREET.

SURVEYED AND PLATTED BY:  
 RESOURCE INTERNATIONAL, INC.

SURVEYOR'S CERTIFICATE:  
 I HEREBY CERTIFY THAT THIS DRAWING IS A TRUE DELINEATION OF A SURVEY MADE UNDER MY DIRECT SUPERVISION IN SEPTEMBER 2018.

*Mark S. Ward* 2-19-2020  
 MARK S. WARD P.S., S-7514 DATE



FEB 19 2020

123965 - 7-WD

DESCRIPTION	<b>RIGHT-OF-WAY OF 0.002 ACRE</b>		
LOCATION	<b>SWAN ST &amp; CHICOPEE ALLEY 40 SPRUCE ST COLUMBUS, OH</b>		
CLIENT	<b>E. L. ROBINSON ENGINEERING 1801 WATERMARK DR, SUITE 310 COLUMBUS, OH</b> <b>RESOURCE INTERNATIONAL, INC. 6350 PRESIDENTIAL GATEWAY COLUMBUS, OH 43231</b>		
DRAWN BY	CHECKED BY	CREW CHIEF	PROJECT No.
EJG	MSW	KRJ	W18-114
SCALE	DATE	SHEET	
1" = 20'	02-11-2020	1 OF 1	