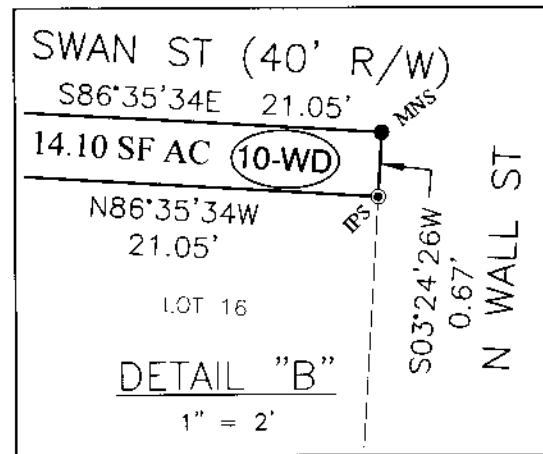
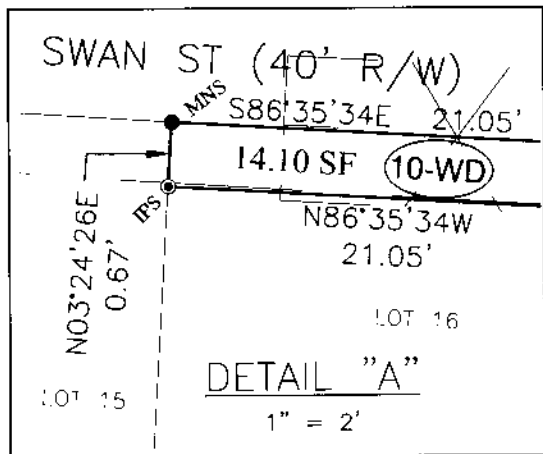


P:\DWG\DEPT9\Projects\2018\W18-114 CDC-ADA Romps-RW-ARR\AS\dwg\Swan & Wall\Asmment\SID_Swan St.Wall St.dwg. Saved on: 2/11/2020 3:10:35 PM Plot Date: 2020/02/11



RIGHT-OF-WAY OF 14.10 SQ FT
SITUATED IN STATE OHIO, COUNTY OF FRANKLIN, CITY OF COLUMBUS AND
BEING PART OF A SUBDIVISION KNOWN AS, "ENGLISH AND MONYPENY'S
SUBDIVISION", PLAT BOOK 3, PAGE 18 LOCATED, IN HALF SECTION 10,
TOWNSHIP 5, RANGE 22, REFUGEE LANDS

BASIS OF BEARING:
THE BEARINGS SHOWN HEREON ARE BASED ON THE OHIO STATE
PLANE COORDINATE SYSTEM, SOUTH ZONE AS PER NAD 83 WITH
AN ESTABLISHED BEARING OF S 86°35'34" E ON THE CENTERLINE
OF SWAN STREET.

LEGEND

MAG NAIL SET ----- ● MNS
IRON PIN SET ----- ● IPS

NOTE:

IRON PINS SET, AS SHOWN ON PLAN AND IN THE ABOVE
DESCRIPTION ARE 5/8" NCH STEEL ROD, THIRTY (30) NC-ES
LONG WITH A PLASTIC CAP STAMPED "RII".

MAG NAIL SET, WHERE INDICATED ARE MAGNETICALLY ENHANCED
NAILS (ZINC PLATED) TWO AND ONE HALF (2-1/2") IN LENGTH
BY ONE QUARTER INCH (1/4") HEAD.

SURVEYED AND PLATTED BY:

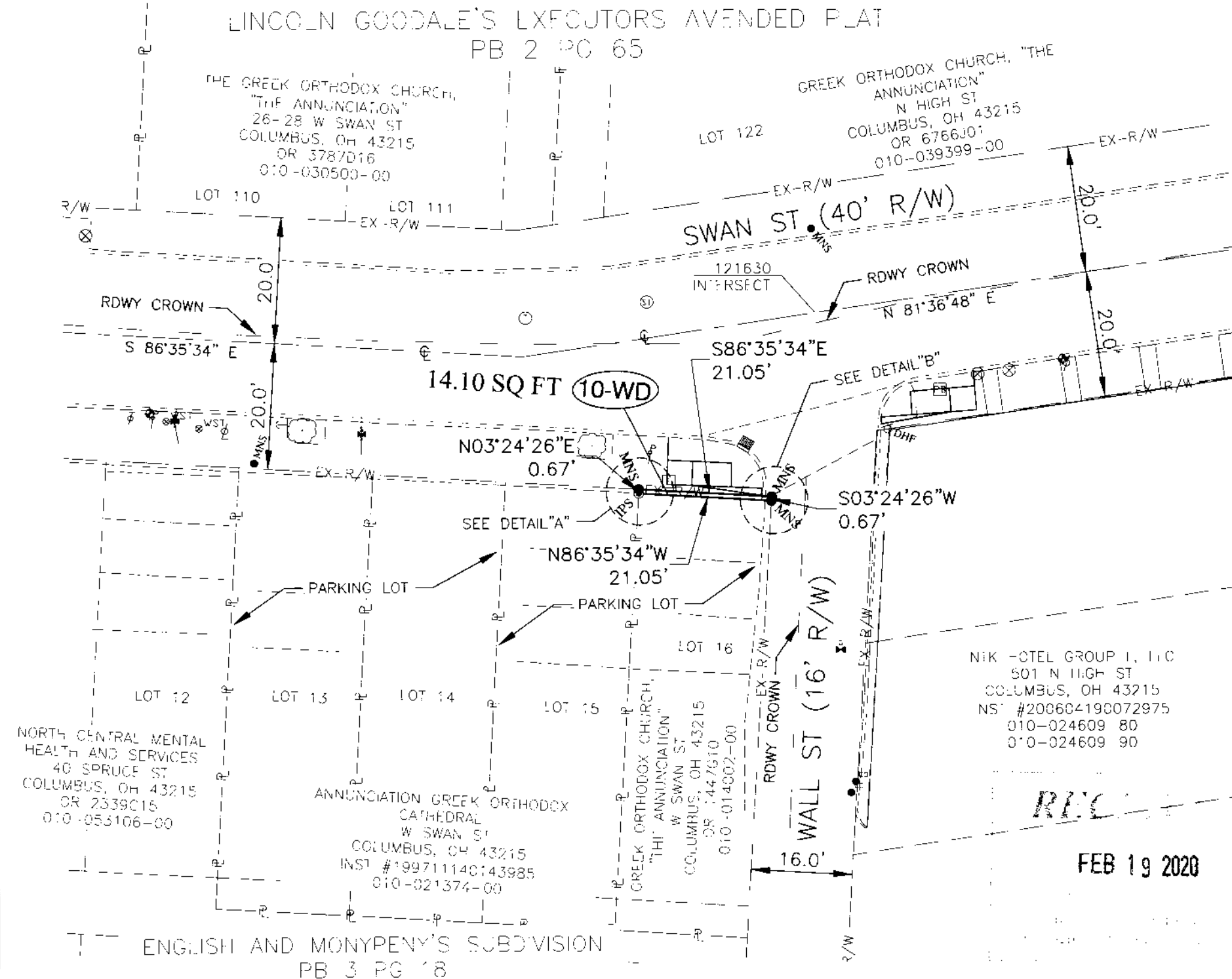
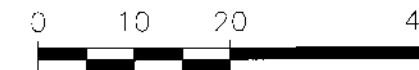


RESOURCE INTERNATIONAL, INC.

SURVEYOR'S CERTIFICATE:

I HEREBY CERTIFY THAT THIS DRAWING IS A TRUE
DELINEATION OF A SURVEY MADE UNDER MY DIRECT
SUPERVISION IN SEPTEMBER 2018.

Mark S. Ward 2-19-2020
MARK S. WARD P.S., S-7514 DATE



NIK HOTEL GROUP I, LLC
501 N HIGH ST
COLUMBUS, OH 43215
NS #200604190072975
010-024609 80
010-024609 90

FEB 19 2020

DESCRIPTION				
RIGHT-OF-WAY OF 14.10 SQ FT				
LOCATION				
SWAN ST & WALL ST W SWAN ST COLUMBUS, OH				
CLIENT				
E. L. ROBINSON ENGINEERING 1801 WATERMARK DR, SUITE 310 COLUMBUS, OH				
RESOURCE INTERNATIONAL, INC. 6350 PRESIDENTIAL GATEWAY COLUMBUS, OH 43231				
DRAWN BY	CHECKED BY	CREW CHIEF	PROJECT NO	SHEET
EJG	MSW	KRJ	W18-114	1 OF 1
SCALE		DATE		
1" = 20'		02-11-2020		