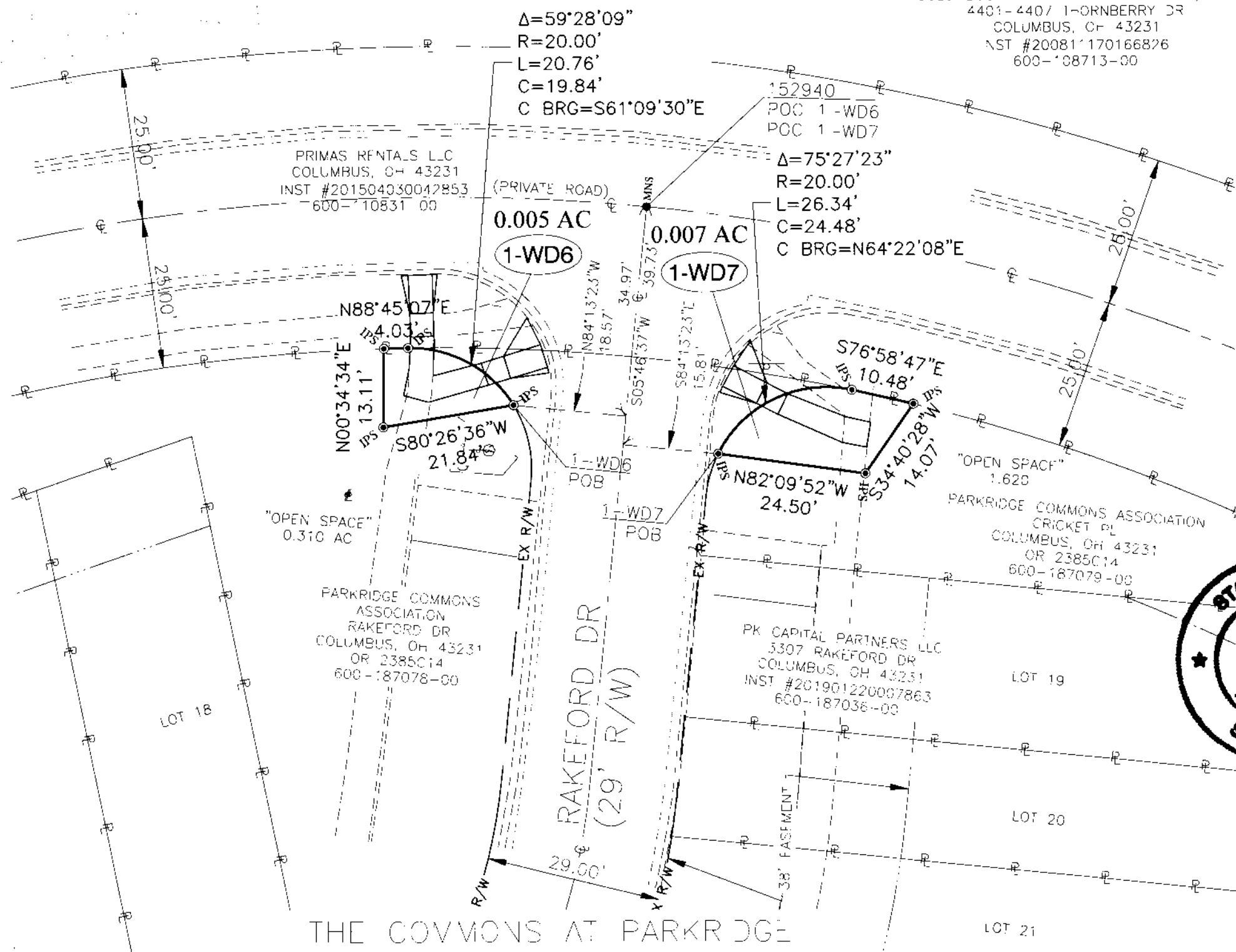


RIGHT-OF-WAY OF 0.005 ACRES AND OF 0.007 ACRES
 SITUATED IN STATE OHIO, COUNTY OF FRANKLIN, CITY OF COLUMBUS AND BEING
 PART OF THE 0.310 ACRE AND THE 1.620 ACRES OPEN SPACE, KNOWN AS
 "THE COMMONS AT PARKRIDGE" AND LOCATED IN NORTH HALF OF LOT 9,
 QUARTER TOWNSHIP 3, TOWNSHIP 2, RANGE 17
 UNITED STATES MILITARY LANDS

RECEIVED
 FEB 19 2020

COLUMBUS THORNAPPLE APARTMENTS, LTD
 4401-4407 THORNAPPLE DR
 COLUMBUS, OH 43231
 INST #20081170166826
 600-108713-00



LEGEND
 MAG NAIL SET -----● MNS
 IRON PIN SET -----● IPS

NOTE:
 IRON PINS SET, AS SHOWN ON PLAN AND IN THE ABOVE DESCRIPTION ARE 5/8" NCH STEEL ROD, THIRTY (30) INCHES LONG WITH A PLASTIC CAP STAMPED "R.I."

MAG NAIL SET, WHERE INDICATED ARE MAGNETICALLY ENHANCED NAILS (ZNC PLATED) TWO AND ONE-HALF (2-1/2") IN LENGTH BY ONE QUARTER INCH (1/4") HEAD.

BASIS OF BEARING:
 THE BEARINGS SHOWN HEREON ARE BASED ON THE OHIO STATE PLANE COORDINATE SYSTEM, SOUTH ZONE AS PER MAP 83 WITH AN ESTABLISHED BEARING OF S 05°46'37" W ON THE CENTERLINE OF RAKEFORD DRIVE.

SURVEYED AND PLATTED BY:
 RESOURCE INTERNATIONAL, INC.

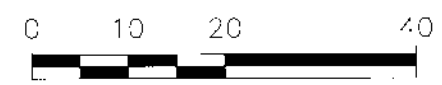
SURVEYOR'S CERTIFICATE:
 I HEREBY CERTIFY THAT THIS DRAWING IS A TRUE DEFINITION OF A SURVEY MADE UNDER MY DIRECT SUPERVISION IN SEPTEMBER 2018.

Mark S. Ward 2-19-2020
 MARK S. WARD P.S., S 7514 DATE



152940 - 1-WD6 & 1-WD7

DESCRIPTION	
RIGHT-OF-WAY OF 0.005 ACRES & 0.007 ACRES	
LOCATION	
THORNAPPLE DR & RAKEFORD DR CRICKET PL COLUMBUS, OH	
CLIENT	
E. L. ROBINSON ENGINEERING 1801 WATERMARK DR, SUITE 310 COLUMBUS, OH	
RESOURCE INTERNATIONAL, INC. 6350 PRESIDENTIAL GATEWAY COLUMBUS, OH 43231	



THE COMMONS AT PARKRIDGE
 PB 57 PG 110

DRAWN BY: EJG	CHECKED BY: MSW	CREW CHIEF: KRJ	PROJECT No. W18-114	SHEET 4 OF 4
SCALE 1" = 20'		DATE 02-11-2020		

P:\DWG\DEP-9\Projects\2018\W18 114 COC-ADA Ramps -RW ARLAS\dwg\RAKEFORD_Apley_Cricket & Thornapple\SD_Ra-eford Dr_Thornapple Dr.dwg Save on: 7/1/2020 1:25:21 AM Plot Date: 2020/07/11