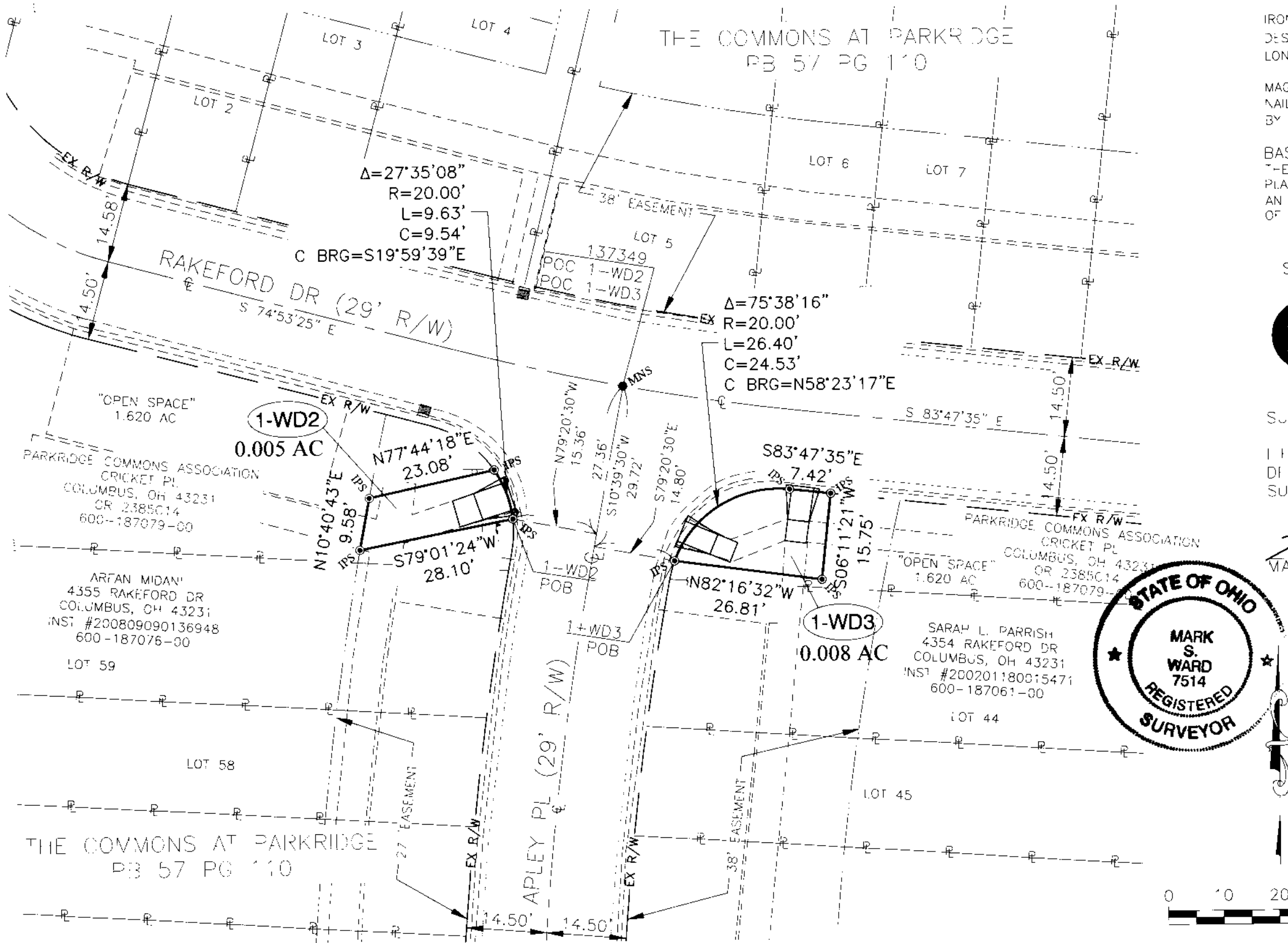


P:\DWG\DEP19\Projects\2020\114 CCC ADA Ramps-RW AREAS\dwg\RAKEFORD_APLEY_Cricket & Trampole\RAKEFORD_APLEY_Cricket & Trampole.dwg Saved on: 2/11/2020 10:12:40 AM Plot Date: 2020/02/11

RECEIVED

FEB 19 2020

RIGHT-OF-WAY OF 0.005 ACRES AND OF 0.008 ACRES
SITUATED IN STATE OHIO, COUNTY OF FRANKLIN, CITY OF COLUMBUS
AND BEING PART OF A 1.620 ACRE OPEN SPACE, KNOWN AS
"THE COMMONS AT PARKRIDGE" AND LOCATED IN NORTH HALF OF
LOT 9, QUARTER TOWNSHIP 3, TOWNSHIP 2, RANGE 17
UNITED STATES MILITARY LANDS



LEGEND

- MAG NAIL SET ----- ● MNS
- IRON PIN SET ----- ● IPS

NOTE:

IRON PINS SET, AS SHOWN ON PLAN AND IN THE ABOVE DESCRIPTION ARE 5/8" NCH STEEL ROD, THIRTY (30) NC-ES LONG WITH A PLASTIC CAP STAMPED "RIP".

MAG NAIL SET, WHERE INDICATED ARE MAGNETICALLY ENHANCED NAILS (ZINC PLATED) TWO AND ONE HALF (2-1/2") IN LENGTH BY ONE QUARTER INCH (1/4") HEAD.

BASIS OF BEARING:
THE BEARINGS SHOWN HEREON ARE BASED ON THE OHIO STATE PLANE COORDINATE SYSTEM, SOUTH ZONE AS PER NAD 83 WITH AN ESTABLISHED BEARING OF S 10°39'30" W ON THE CENTERLINE OF APLEY PLACE.

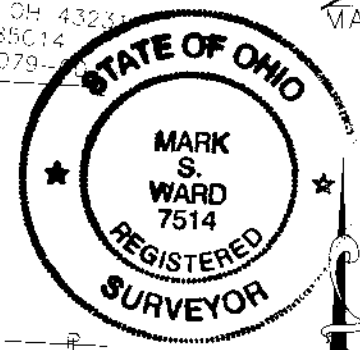
SURVEYED AND PLATTED BY:



SURVEYOR'S CERTIFICATE:

I HEREBY CERTIFY THAT THIS DRAWING IS A TRUE DELINEATION OF A SURVEY MADE UNDER MY DIRECT SUPERVISION IN SEPTEMBER 2018.

Mark S. Ward 2-19-2020
MARK S. WARD P.S., S-7514 DATE



137349 - 1-WD2 & 1-WD3

DESCRIPTION				
RIGHT-OF-WAY OF 0.005 ACRES & 0.008 ACRES				
LOCATION				
RAKEFORD DR & APLEY PL CRICKET PL COLUMBUS, OH				
CLIENT				
E. L. ROBINSON ENGINEERING 1801 WATERMARK DR, SUITE 310 COLUMBUS, OH				
RESOURCE INTERNATIONAL, INC. 6350 PRESIDENTIAL GATEWAY COLUMBUS, OH 43231				
DRAWN BY	CHECKED BY	CREW CHIEF	PROJECT NO	SHEET
EJG	MSW	KRJ	W18-114	2 OF 4
SCALE		DATE		
1" = 20'		02-11-2020		

