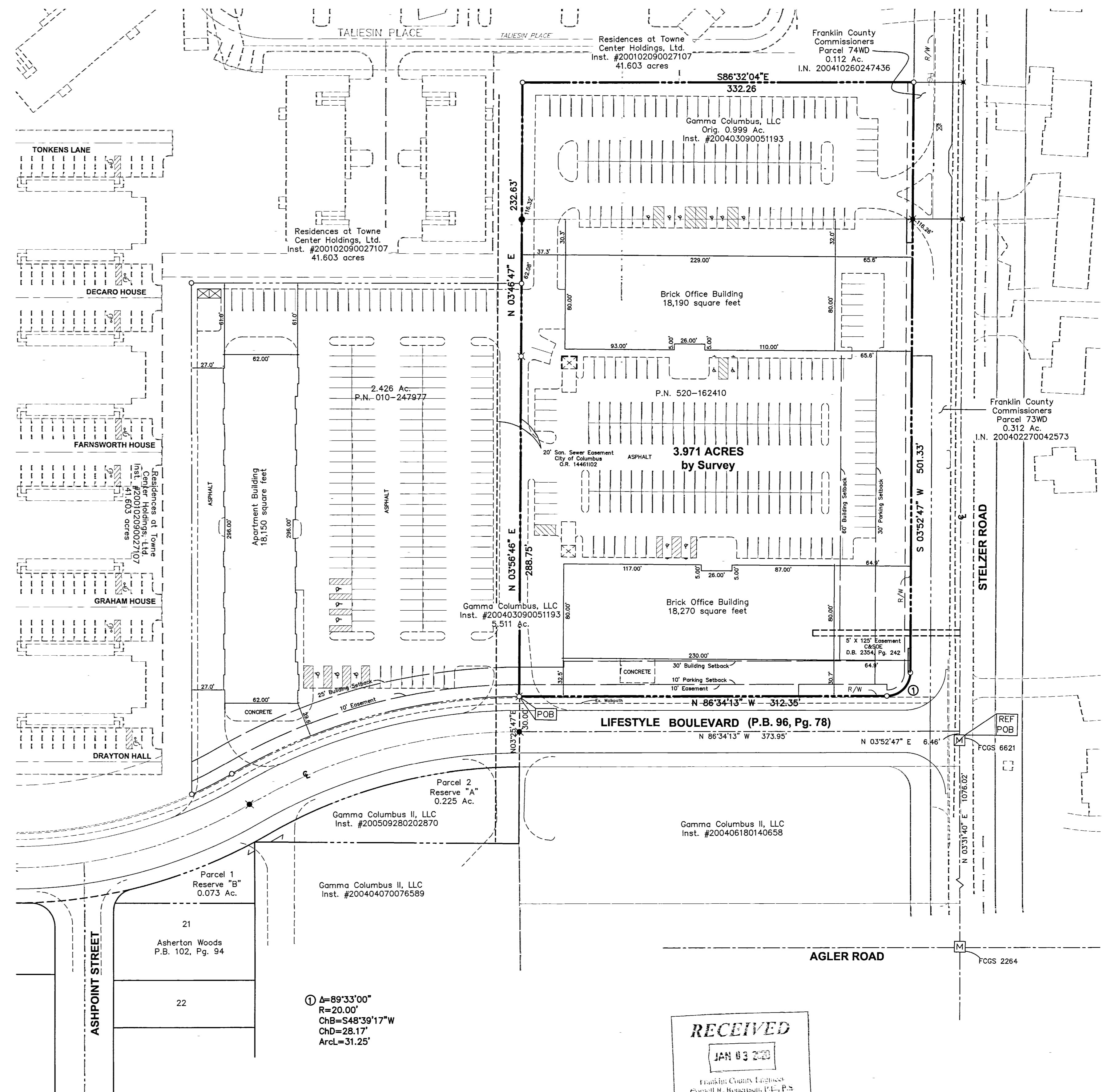


LOCATION MAP
NO SCALE

All iron pins set are 5/8" diameter rebar, 30" long with plastic cap inscribed "Advanced 7661".

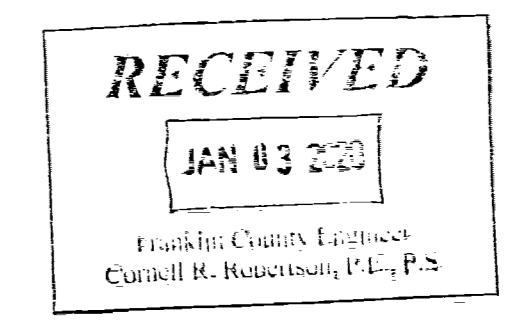
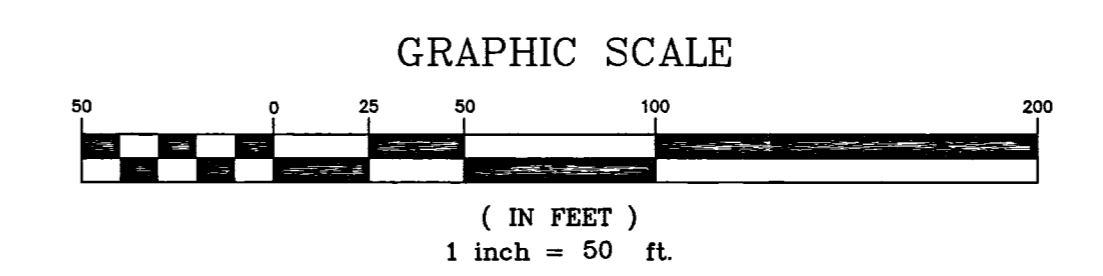
This description is based on existing records from the Franklin County Recorder's and the Franklin County Auditor's Office and an actual field survey by Advanced Civil Design, Inc. in March 2004. A drawing of the above description is attached hereto and made a part thereof.

Bearings are based upon the Ohio State Plane Coordinate System South Zone, NAD83 (NSRS 2007) which determined the bearing between found Franklin County Engineer Survey Monument (FCGS 6621) and said Franklin County Engineer Survey Monument (FCGS 2264) as N 03° 31' 40" E for the centerline of said Stelzer Road.



LEGEND

● IRON PIN FOUND	○ IRON PIN SET W / CAP ADVANCED 7661 3/4" - 30" long
✕ PK NAIL FOUND	✕ PK NAIL SET
▲ RR SPIKE FOUND	▲ RR SPIKE SET
Ⓜ MONUMENT BOX	Ⓜ MONUMENT
⊖ CONCRETE POST	



ADVANCED CIVIL DESIGN, INC.
Douglas R. Hock, P.S. 7661
Date: 1/2/10

CITY OF COLUMBUS, FRANKLIN COUNTY, OHIO

PARCEL EXHIBIT
OF
3.971 ACRES - LIFESTYLE BOULEVARD
BRADFORD SCHOOLS

PLAN PREPARED BY: DRB
CHECKED BY: DRH

422 Beecher Road
Gahanna, Ohio 43230
ph 614.428.7750
fax 614.428.7755

ADVANCED CIVIL DESIGN
FRANKLIN COUNTY ENGINEER'S OFFICE
Curtis R. Reuterbach, P.E., P.S.

SCALE: 1" = 50'
DATE: December 18, 2019
JOB#: 19-0004-163

SHEET 1 / 1

Z:\19-0004-163\DWG\PRODUCTION DRAWINGS\SURVE\19-0004-163_3.972 ac parcel exhibit site 2.dwg Layout1 Jan 02, 2020 10:27:07am dbickham