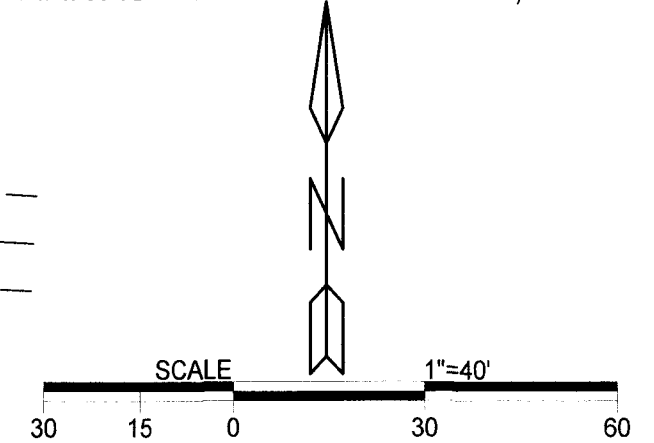
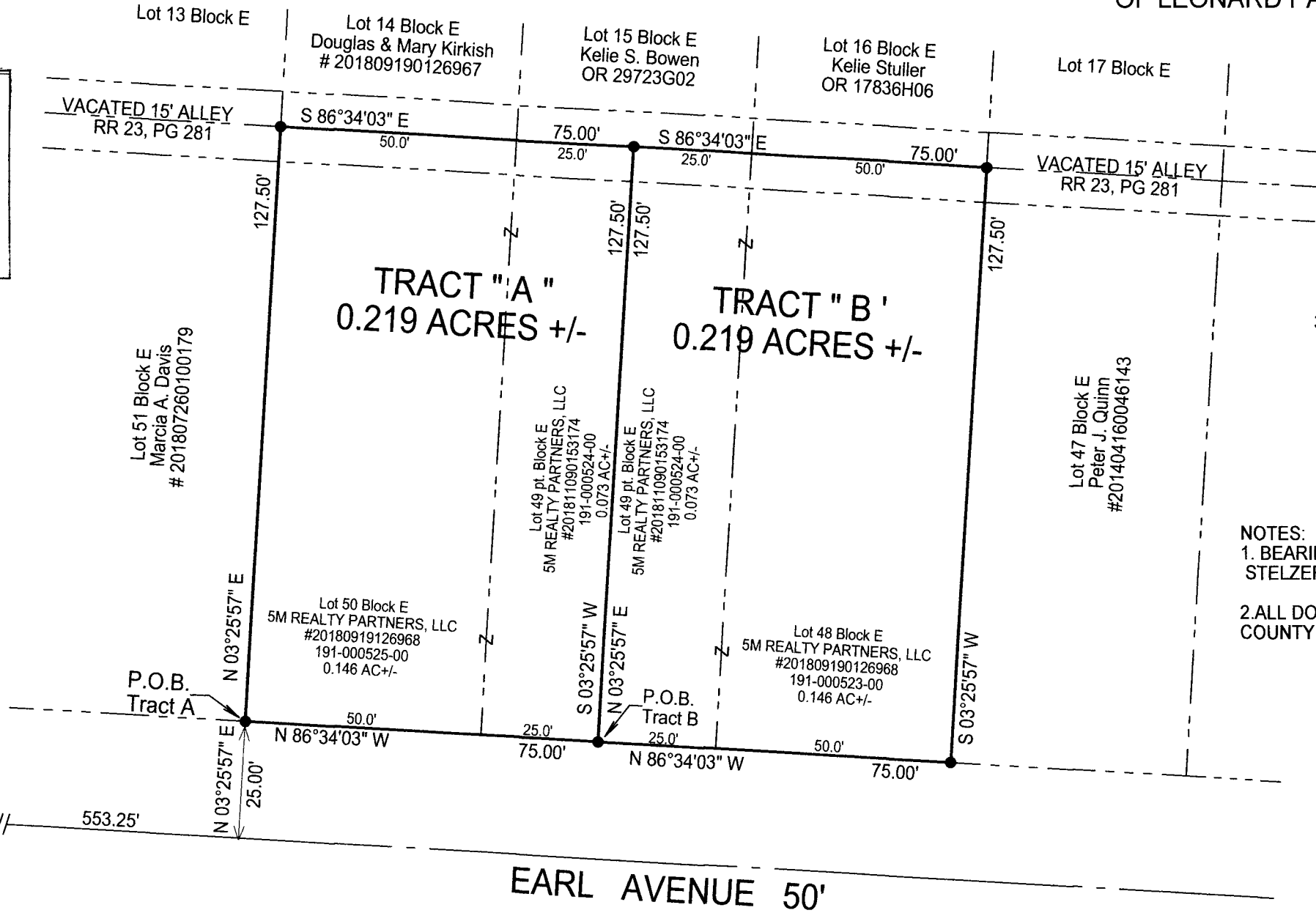


surveyed & platted by
POMEROY ASSOCIATES, Ltd.
 2550 Corporate Drive, Suite 10
 Columbus, Ohio 43231
 614-885-2498

SITUATED IN THE STATE OF OHIO, COUNTY OF FRANKLIN, TOWNSHIP OF MIFFLIN,
 QUARTER TOWNSHIP 4, TOWNSHIP-1N, RANGE-17W, UNITED STATES MILITARY LANDS
 BEING A DIVISION OF LOTS 48, 49 and 50 OF BLOCK "E",
 and a part of a vacated 15' Alley as vacated in Road Records 23 PG. 281,
 OF LEONARD PARK AS RECORDED IN PB. 18, PG.18.

RECEIVED
 SEP 18 2019
 Franklin County Engineer
 Cornell R. Kobersohn, C.E., P.S.



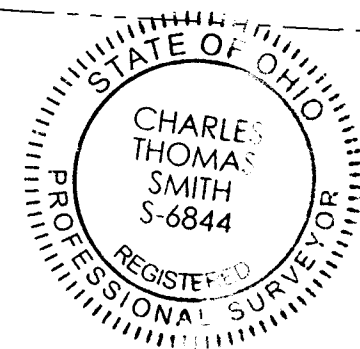
LEGEND


- 5/8" X 30" iron pin w/ 1 1/4" plastic ID cap inscribed "Pomeroy & Assoc. " set.
- concrete monument, Franklin County, FCGS

NOTES:
 1. BEARINGS WERE DERIVED FROM THE CENTERLINE OF STELZER ROAD AS RUNNING S03° 33' 01" W.
 2. ALL DOCUMENT REFERENCES ARE TO THE RECORDS OF FRANKLIN COUNTY UNLESS OTHERWISE STATED.

REFERENCES
 Current Tax Plats
 Previous surveys
 Deeds: as noted
 Aerial Photographs
 U.S.G.S. Topo Maps
 Plat Book 18, Pg. 18

FLOOD ZONE "X"
 FRANKLIN COUNTY 390167
 39049C0193K
 6/17/08



Plat prepared from an actual survey made by Pomeroy and Associates under my direct supervision on the 18th day of August, 2019 by,

 C. Thomas Smith Ohio Professional Surveyor No. 6844

FCGS 2266 GENESSEE AVE. P.O.R.
 CENTERLINE STELZER ROAD
 S 03°33'01" W 302.98'
 S 03°33'01" W 2329.63'
 FCGS 5509 reset