



Evans, Mechwart, Hambleton & Tilton, Inc.
 Engineers • Surveyors • Planners • Scientists
 5500 New Albany Road, Columbus, OH 43054
 Phone: 614.775.4500 Toll Free: 888.775.3648
 emht.com

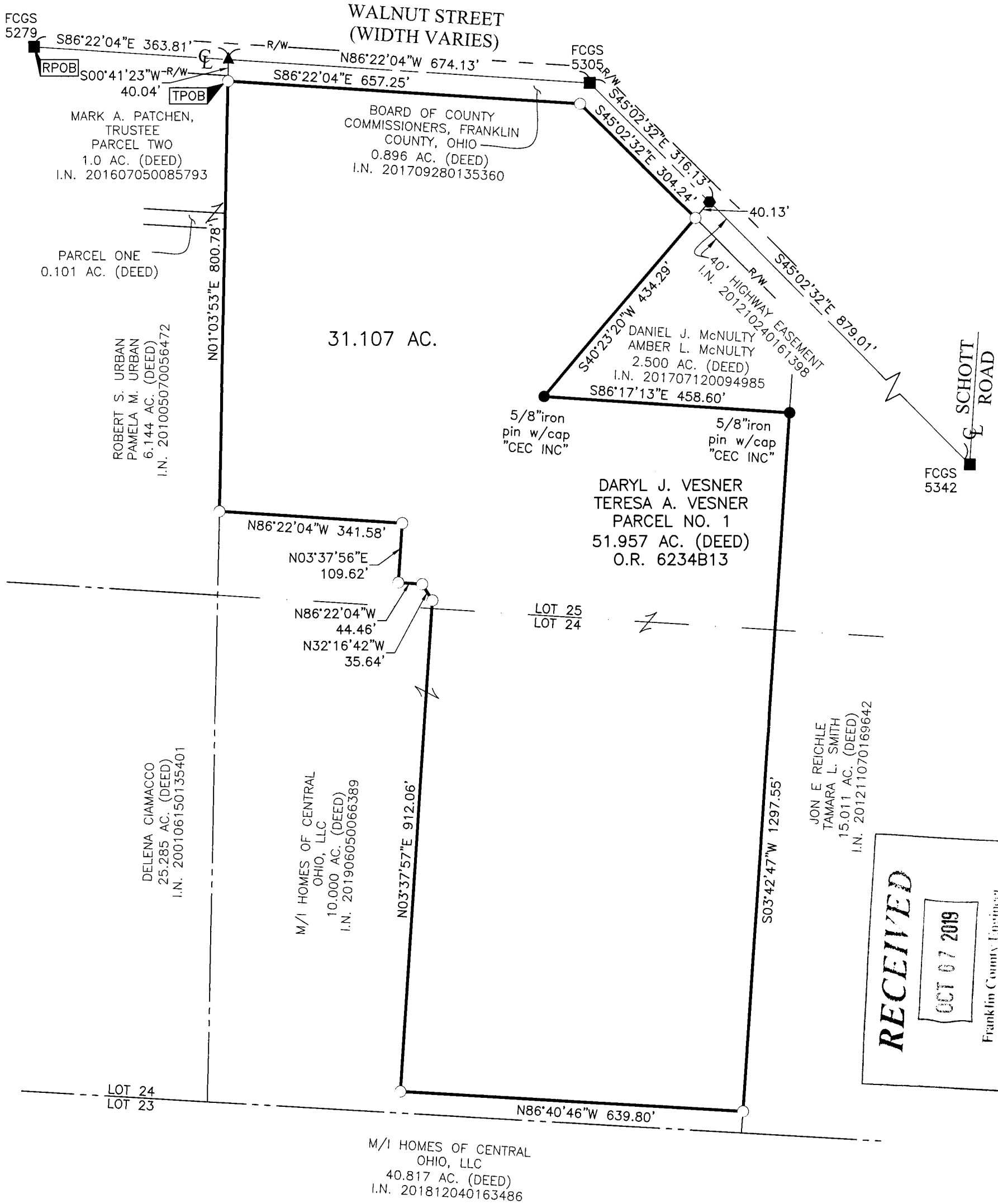
SURVEY OF ACREAGE PARCEL

LOTS 24 & 25, QUARTER TOWNSHIP 1, TOWNSHIP 2, RANGE 17
 UNITED STATES MILITARY LANDS
 CITY OF COLUMBUS, COUNTY OF FRANKLIN, STATE OF OHIO

Date: September 26, 2019

Job No: 2019-0005

Scale: 1" = 200'



RECEIVED

OCT 07 2019

Franklin County Engineer
 Cornell R. Robertson, P.E., P.S.

BASIS OF BEARINGS:

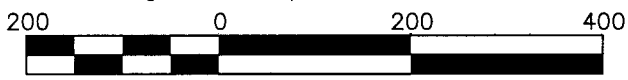
The bearings shown hereon are based on the Ohio State Plane Coordinate System, South Zone, NAD83 (2007). Said bearings originated from a field traverse which was tied (referenced) to said coordinate system by GPS observations of FCGS Monument Numbers 5279 and 5305, having a bearing of South 86° 22' 04" East between said monuments.

SURVEY NOTE:

This survey was prepared using documents of record, prior plats of survey, and observed evidence located by an actual field survey.

- = STONE FND.
- = MON. FND.
- = I.P. FND.
- = I.P. SET
- = MAG. NAIL FND.
- = MAG. NAIL SET
- ▲ = R.R. SPK. FND.
- △ = R.R. SPK. SET
- ◆ = P.K. NAIL FND.

I.P. Set are 13/16" I.D. iron pipes 30" long with cap inscribed EMHT INC.



GRAPHIC SCALE (in feet)



By Matthew A. Kirk
 Matthew A. Kirk
 Professional Surveyor No. 7865

26 SEP 19
 Date