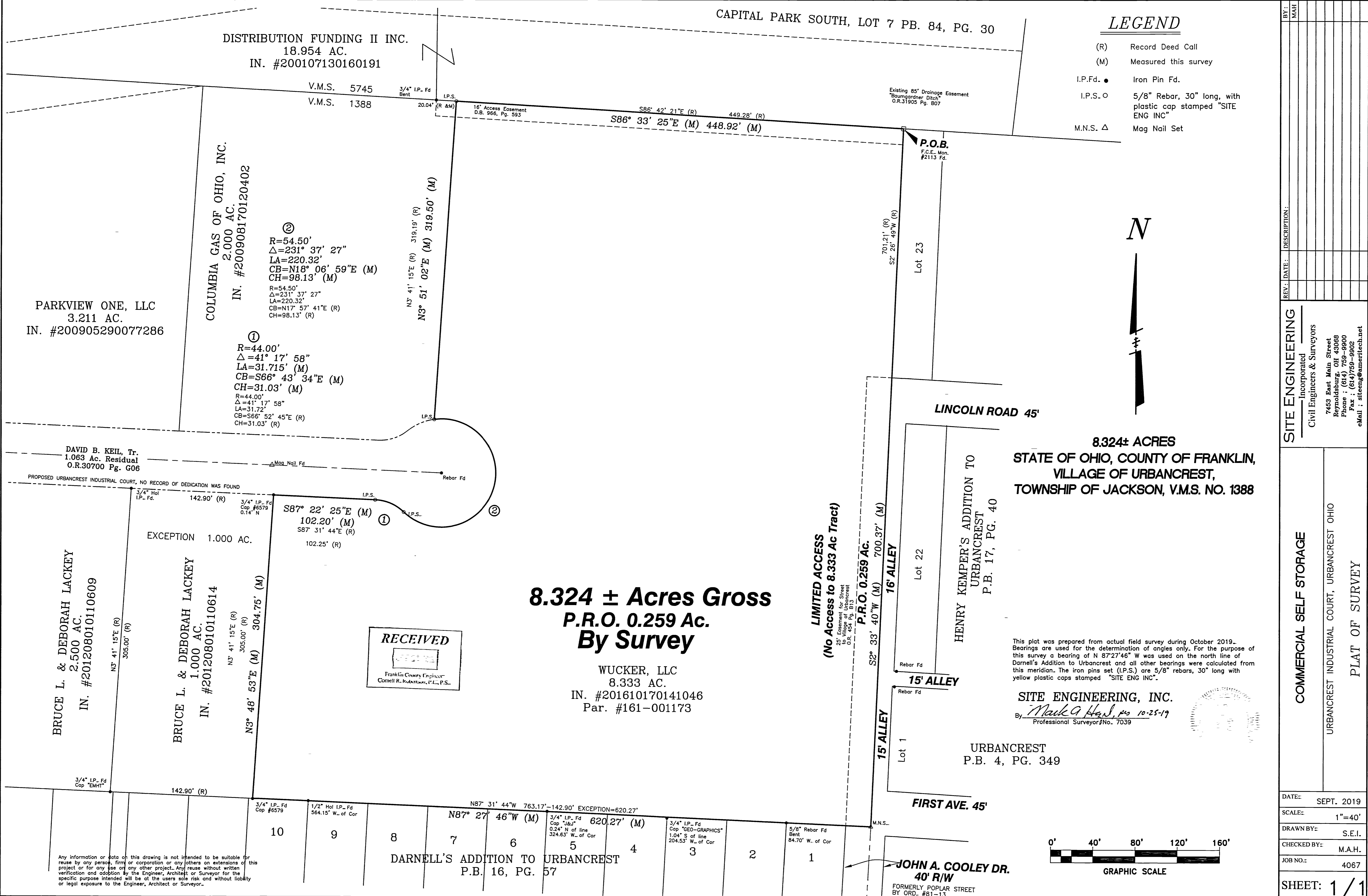


\\Server\shared\PROJECTS\2006\4067\4067-R1.dwg ~~~ Oct 29, 2019 8:49am ~~~



PARKVIEW ONE, LLC
 3.211 AC.
 IN. #200905290077286

COLUMBIA GAS OF OHIO, INC.
 2.000 AC.
 IN. #200908170120402

②
 R=54.50'
 Δ=231° 37' 27"
 LA=220.32'
 CB=N18° 06' 59"E (M)
 CH=98.13' (M)

①
 R=44.00'
 Δ=41° 17' 58"
 LA=31.715' (M)
 CB=S66° 43' 34"E (M)
 CH=31.03' (M)

DAVID B. KEIL, Tr.
 1.063 Ac. Residual
 O.R.30700 Pg. G06

EXCEPTION 1.000 AC.

BRUCE L. & DEBORAH LACKEY
 2.500 AC.
 IN. #201208010110609

BRUCE L. & DEBORAH LACKEY
 1.000 AC.
 IN. #201208010110614

DARNELL'S ADDITION TO URBANCREST
 P.B. 16, PG. 57

LIMITED ACCESS
 (No Access to 8.333 Ac Tract)

P.R.O. 0.259 Ac.

HENRY KEMPER'S ADDITION TO URBANCREST
 P.B. 17, PG. 40

This plat was prepared from actual field survey during October 2019. Bearings are used for the determination of angles only. For the purpose of this survey a bearing of N 87°27'46" W was used on the north line of Darnell's Addition to Urbancrest and all other bearings were calculated from this meridian. The iron pins set (I.P.S.) are 5/8" rebar, 30" long with yellow plastic caps stamped "SITE ENG INC".



Any information or data on this drawing is not intended to be suitable for reuse by any person, firm or corporation or any others on extensions of this project or for any use on any other project. Any reuse without written verification and adoption by the Engineer, Architect or Surveyor for the specific purpose intended will be at the users sole risk and without liability or legal exposure to the Engineer, Architect or Surveyor.