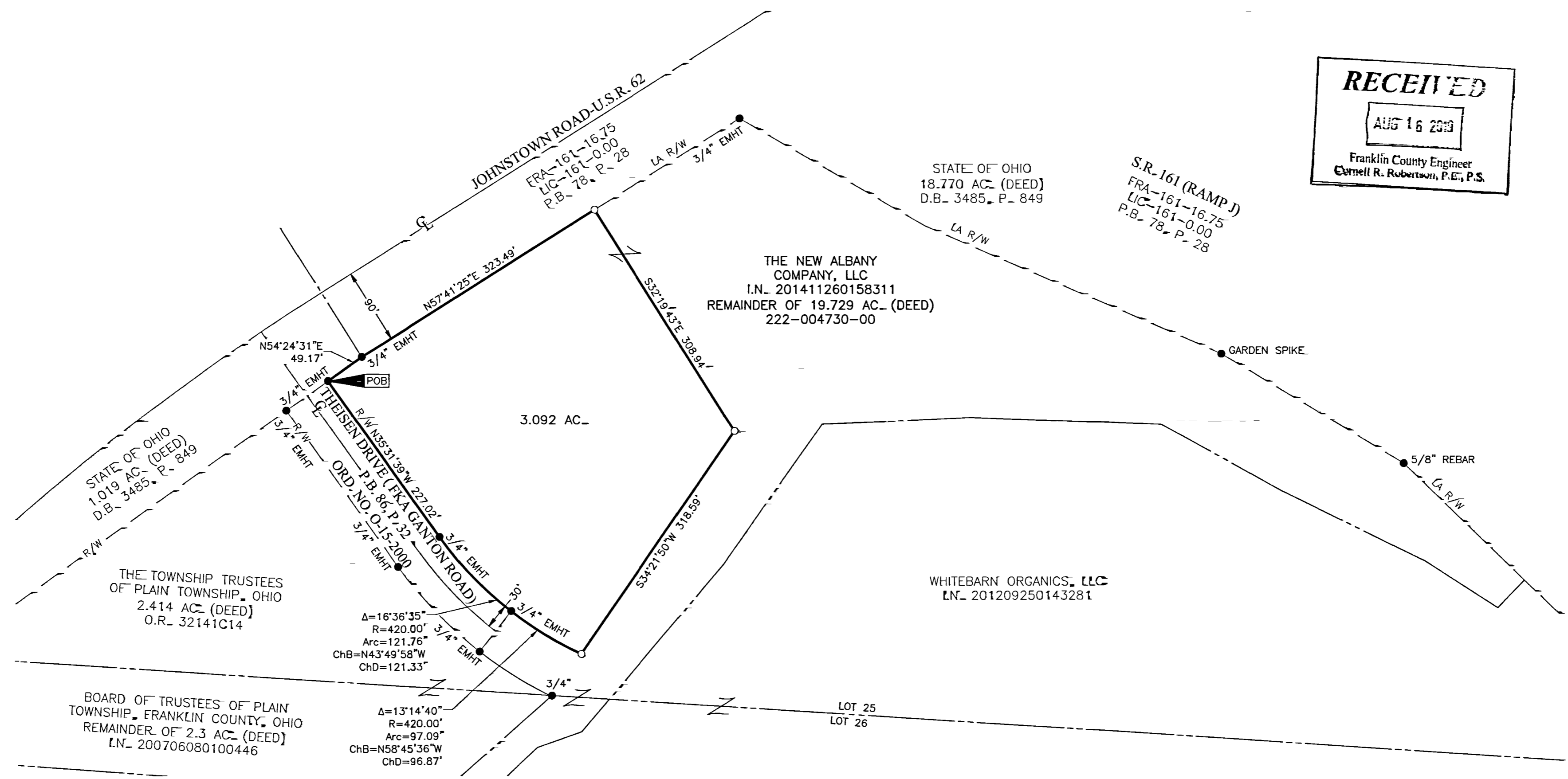


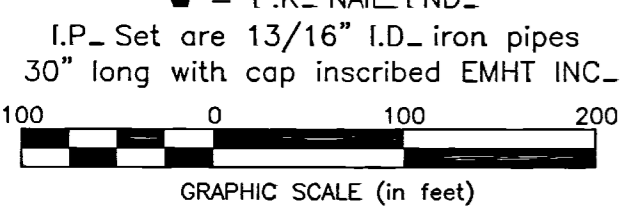
SURVEY OF ACREAGE PARCEL

LOT 25, QUARTER TOWNSHIP 4, TOWNSHIP 2, RANGE 16 UNITED STATES MILITARY DISTRICT CITY OF NEW ALBANY, COUNTY OF FRANKLIN, STATE OF OHIO



RECEIVED
AUG 16 2019
Franklin County Engineer
Cornell R. Robertson, P.E., P.S.

- = STONE_FND_
- = MON_FND_
- = I.P._FND_
- = I.P._SET
- = MAG_NAIL_FND_
- = MAG_NAIL_SET
- ▲ = R.R._SPK_FND_
- △ = R.R._SPK_SET
- ◆ = P.K._NAIL_FND_



SURVEY NOTE:
This survey was prepared using documents of record, prior plats of survey, and observed evidence located by an actual field survey.

BASIS OF BEARING:
Bearings are based on the Ohio State Plane Coordinate System, South Zone NAD83, NSRS 2007. A bearing of North 86°20'52" West was held for the south line of Lot 26, Quarter Township 4, Township 2, Range 16, USMD.

By Date 08/15/2019
John C. Dodgion
Professional Surveyor No. 8069

EMHT Evans, Mechwart, Hambleton & Tilton, Inc. Engineers • Surveyors • Planners • Scientists 5500 New Albany Road, Columbus, OH 43054 Phone: 614.775.4500 Toll Free: 888.775.3648 emht.com		Date= August 14, 2019
		Scale= 1" = 100'
		Job No= 2019-0153
		Sheet= 1 of 1
REVISIONS		
MARK	DATE	DESCRIPTION

J:\2019\153\DWG\4SHEETS\BOUNDARY\20190153-VS-BNDY-04.DWG plotted by DODGION, JOHN on 8/14/2019 3:51:39 PM last saved by DODGION, JOHN on 8/13/2019 11:39:40 AM