

I-2-B  
I-3-B



Evans, Mechwart, Hambleton & Tilton, Inc.  
Engineers • Surveyors • Planners • Scientists  
5500 New Albany Road, Columbus, OH 43054  
Phone: 614.775.4500 Toll Free: 888.775.3648

emht.com

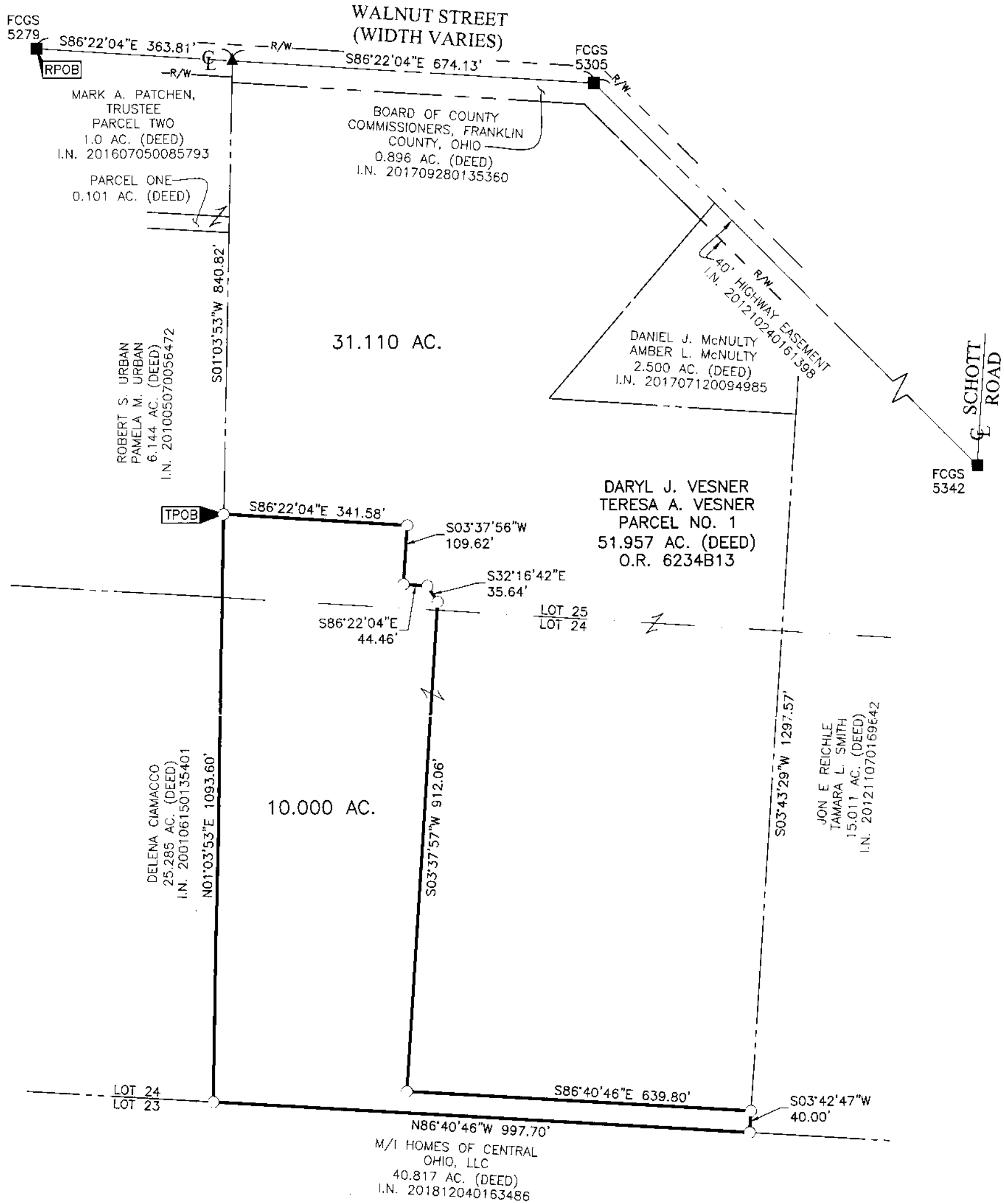
# SURVEY OF ACREAGE PARCEL

LOTS 24 & 25, QUARTER TOWNSHIP 1, TOWNSHIP 2, RANGE 17  
UNITED STATES MILITARY LANDS  
CITY OF COLUMBUS, COUNTY OF FRANKLIN, STATE OF OHIO

Date: March 11, 2019

Job No: 2017-0716

Scale: 1" = 200'



**BASIS OF BEARINGS:**

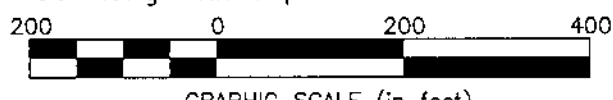
The bearings shown hereon are based on the Ohio State Plane Coordinate System, South Zone, NAD83 (2007). Said bearings originated from a field traverse which was tied (referenced) to said coordinate system by GPS observations of FCGS Monument Numbers 5279 and 5305, having a bearing of South 86° 22' 04" East between said monuments.

**SURVEY NOTE:**

This survey was prepared using documents of record, prior plats of survey, and observed evidence located by an actual field survey.

- = STONE FND.
- = MON. FND.
- = I.P. FND.
- = I.P. SET
- = MAG. NAIL FND.
- = MAG. NAIL SET
- ▲ = R.R. SPK. FND.
- △ = R.R. SPK. SET
- ◆ = P.K. NAIL FND.

I.P. Set are 13/16" I.D. iron pipes  
30" long with cap inscribed EMHT INC.



GRAPHIC SCALE (in feet)



By Matthew A. Kirk  
Matthew A. Kirk  
Professional Surveyor No. 7865

March 19  
Date

J:\20170716\DWG\045HEE\BOUNDARY\20170716-VS-BNDY-01.DWG plotted by KIRK, MATTHEW on 3/11/2019 12:18:24 PM last saved by MKRK on 3/8/2019 3:01:15 PM