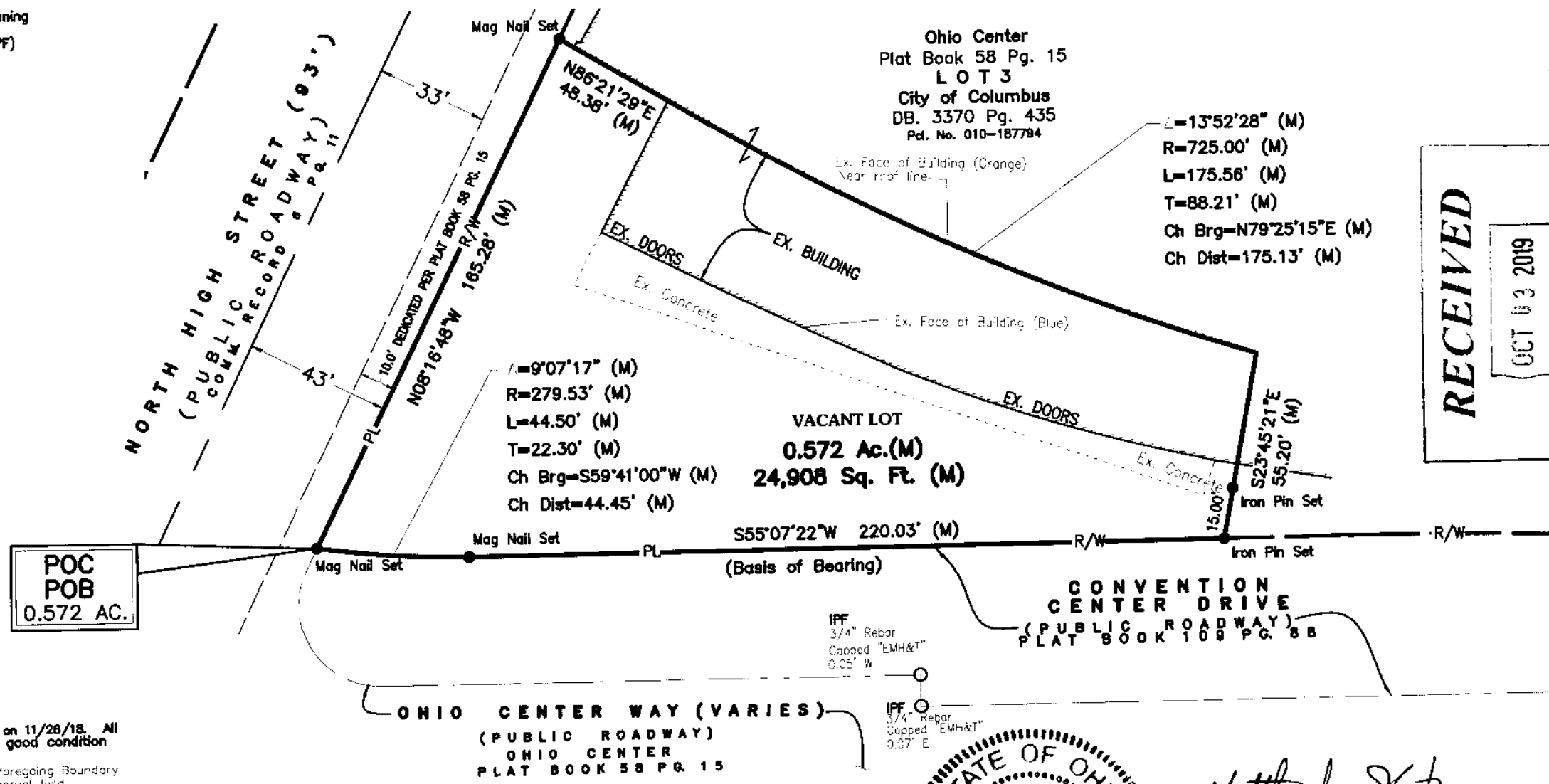
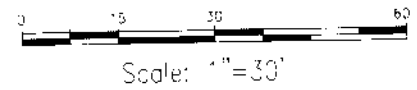


- LEGEND**
- PL Property Line
 - R/W Right-of-Way
 - POC Point of Commencement
 - POB True Point of Beginning
 - Iron Pin Found (IPF)
Mag Nail Found
 - Iron Pin Set
Mag Nail Set

0.572 ACRE BOUNDARY SURVEY

STATE OF OHIO, COUNTY OF FRANKLIN, CITY OF COLUMBUS, AND
BEING IN HALF SECTION 10, TOWNSHIP 5, RANGE 22, REFUGEE LANDS



L=13°52'28" (M)
R=725.00' (M)
L=175.56' (M)
T=88.21' (M)
Ch Brg=N79°25'15"E (M)
Ch Dist=175.13' (M)

L=9°07'17" (M)
R=279.53' (M)
L=44.50' (M)
T=22.30' (M)
Ch Brg=S59°41'00"W (M)
Ch Dist=44.45' (M)

S55°07'22"W 220.03' (M)
(Basis of Bearing)

RECEIVED

OCT 03 2019

Franklin County Engineer
Council K. Koberstein, P.E., P.S.

Field survey was conducted on 11/28/18. All monuments found are in good condition unless otherwise noted.

We hereby certify that the foregoing Boundary Survey was prepared from actual field measurements in accordance with Chapter 47.55-37 Ohio Administrative Code.

All iron pins set are 3/8" rebar, 30" in length with yellow plastic cap and all Mag Nails set are with brass survey marker with "EP FERRIS SURVEYOR 8342" inscribed on top.

The bearings for this description are based on the Ohio State Plane Coordinate System, South Zone, NAD83 (2011). Said bearings originated from a field traverse which was referenced to said coordinate system by GPS observations and observations of selected stations in the Ohio Department of Transportation Virtual Reference Station Network. The north line of Convention Center Drive as shown in Columbus Convention Center Drive Dedication Part 2, of record on Plat Book 109, Page 88 having a bearing of South 55°07'22" West is designated the "Basis of Bearing" for this description.



BY: *Matthew Lee Sloat* 10/2/19
Matthew Lee Sloat, P.E., P.S.
Registered Surveyor No. 8342

E. P. FERRIS
AND ASSOCIATES
INC.

CONTACT:
880 KING AVENUE
COLUMBUS, OHIO 43212
(614) 299-2989
(614) 299-2992 (Fax)
www.EPFERRIS.com

Consulting Civil Engineers and Surveyors

HILTON 2.0 FRANKLIN COUNTY CONVENTION CENTER 0.572 ACRE BOUNDARY SURVEY	
JOB NO. 623.002	DRAWN BY: CK
CHECKED BY: MLS	APPROVED BY: MLS
DATE: 10-01-19	