

C-9-F



Evans, Mechwart, Hambleton & Tilton, Inc.
 Engineers • Surveyors • Planners • Scientists
 5500 New Albany Road, Columbus, OH 43054
 Phone: 614.775.4500 Toll Free: 888.775.3648
 emht.com

SURVEY OF ACREAGE PARCEL

VIRGINIA MILITARY DISTRICT SURVEY NUMBER 1448

CITY OF GROVE CITY, COUNTY OF FRANKLIN, STATE OF OHIO

Date: December 12, 2019

Scale: 1" = 60'

Job No: 2019-0038

(A) CATHERINE F. BAUMGARTNER
 25 AC. (DEED) (REMAINDER)
 O.R. 27875C09
 I.N. 201012070166604

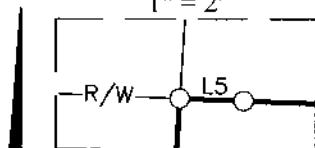
(B) CITY OF GROVE CITY, OHIO
 4.969 AC. (DEED)
 I.N. 201910100135028

(C) MICHAEL GARCIA AND ANNE M. GARCIA
 10 AC. (DEED)
 I.N. 201010080134511

(D) MAGDALENA MENDEZ ALVAREZ
 4.000 AC. (DEED)
 I.N. 201906120069906

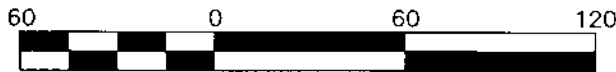
LINE TABLE		
LINE	BEARING	DISTANCE
L1	S03°48'00"W	22.51'
L2	N87°59'13"W	58.35'
L3	S03°48'00"W	17.51'
L4	N03°47'07"E	17.51'
L5	S87°48'55"E	0.66'

DETAIL "A"
 1" = 2'

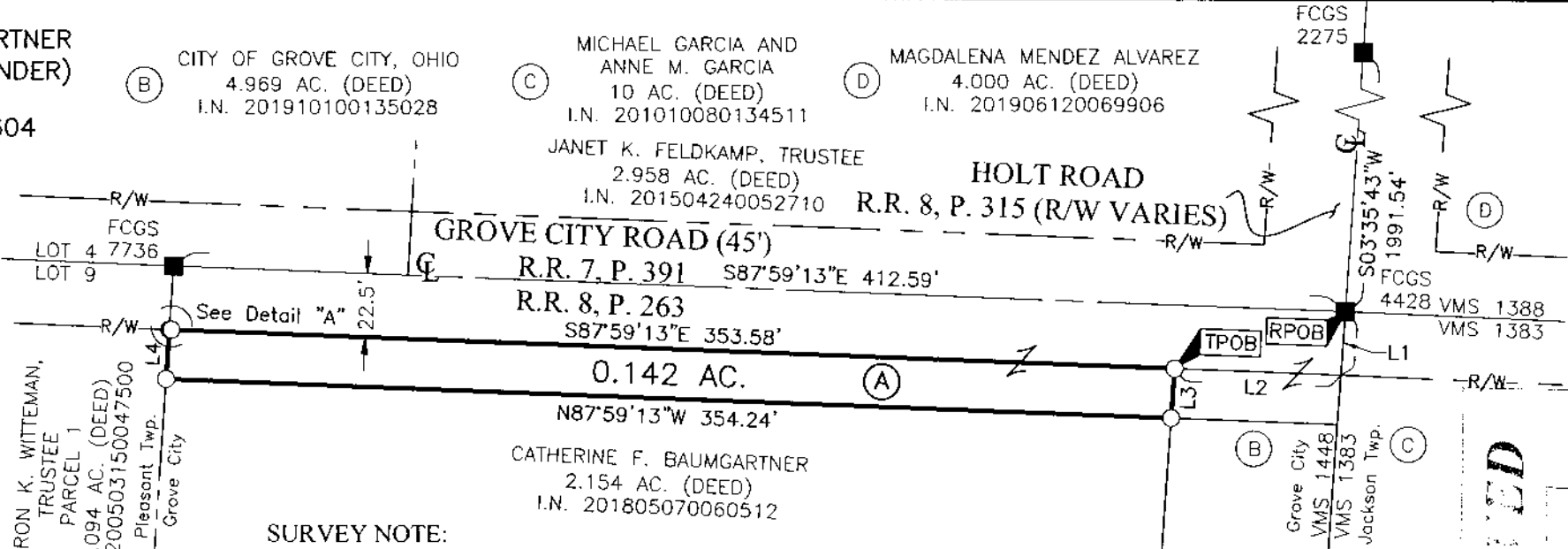


■ = MON. FND.
 ○ = I.P. SET

I.P. Set are 13/16" I.D. iron pipes
 30" long with cap inscribed EMHT INC.



GRAPHIC SCALE (in feet)

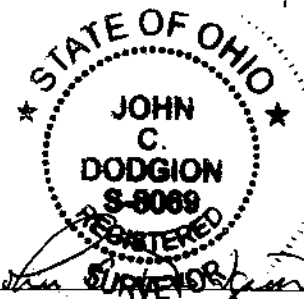


SURVEY NOTE:

This survey was prepared using documents of record, prior plats of survey, and observed evidence located by an actual field survey in May of 2017.

BASIS OF BEARINGS:

The bearings shown on this survey were transferred from a field traverse originating from and tying to Franklin County Survey Control Monuments FCGS 5507 and FCGS 1357 and is based on the Ohio State Plane Coordinate System, South Zone, NAD83 (1986 Adjustment). A bearing of North 03° 48' 00" East was held for the east line of VMS 1448 between Monuments FCGS 5014 and FCGS 4428.



By *John C. Dodgion*
 John C. Dodgion
 Professional Surveyor No. 8069

12/26/2019
 Date

RECEIVED

Franklin County Engineer
 Cornell R. Robinson, P.E., P.S.