



Evans, Mechwart, Hambleton & Tilton, Inc.  
 Engineers • Surveyors • Planners • Scientists  
 5500 New Albany Road, Columbus, OH 43054  
 Phone: 614.775.4500 Toll Free: 888.775.3648

emht.com

# SURVEY OF ACREAGE PARCEL

SECTION 7, TOWNSHIP 5, RANGE 22

REFUGEE LANDS

CITY OF GRANDVIEW HEIGHTS, COUNTY OF FRANKLIN, STATE OF OHIO

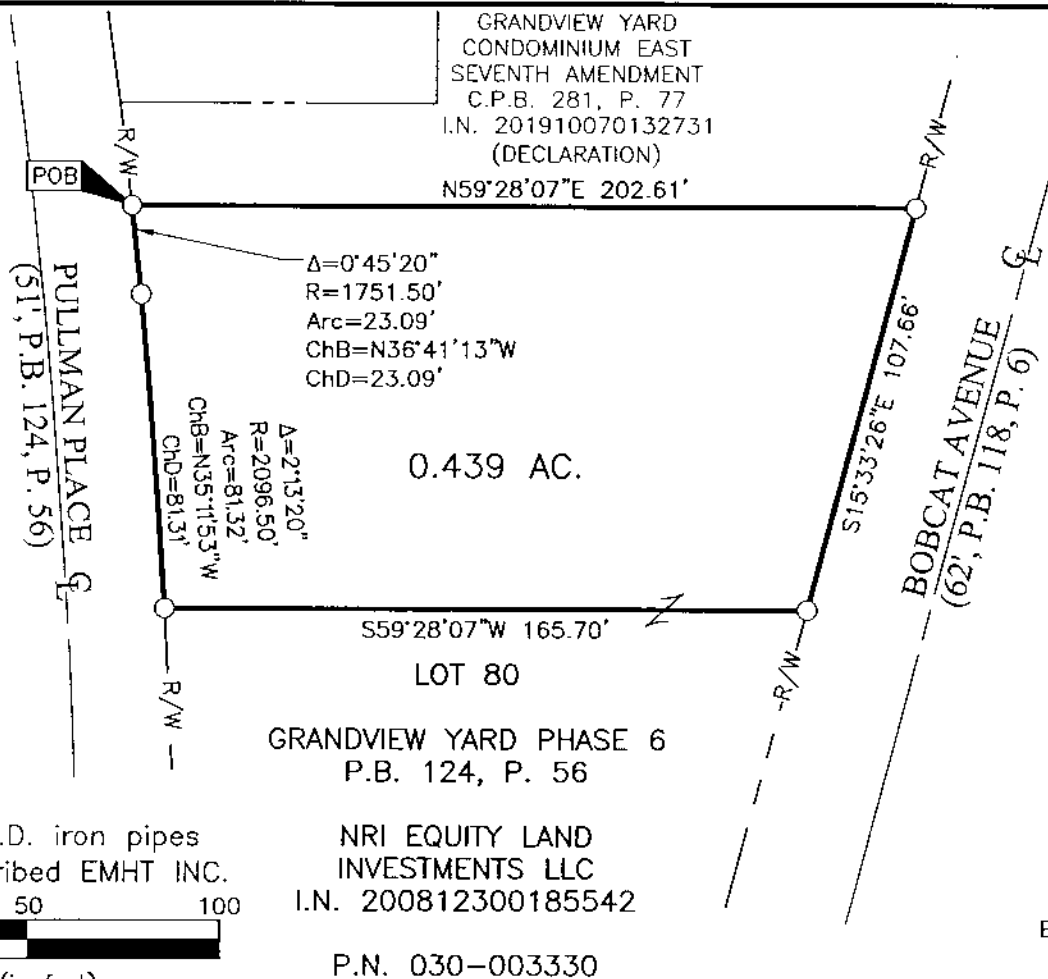
Date: December 11, 2019

Scale: 1" = 50'

Job No: 2019-1312

RECEIVED

Franklin County Engineering Department  
 Council P. Robertson, P.E.



**SURVEY NOTE:**

This survey was prepared using documents of record, prior plats of survey, and observed evidence located by an actual field survey in September 2019.

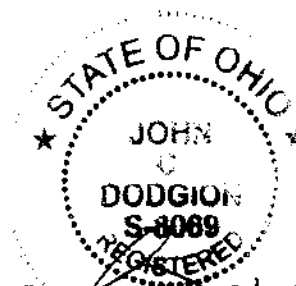
**BASIS OF BEARINGS:**

The bearings shown hereon are based on the Ohio State Plane Coordinate System, South Zone, as per NAD83 (1986 adjustment). Control for the bearings was from coordinates of monuments 5-83 and 4-83, having a bearing of North 00° 22' 10" West, for a portion of the west limited access right-of-way of Olentangy River Road, establish by the Franklin County Engineering Department using Global Positioning System procedures and equipment.

O = I.P. SET  
 I.P. Set are 13/16" I.D. iron pipes  
 30" long with cap inscribed EMHT INC.



GRAPHIC SCALE (in feet)



By John C. Dodgion  
 John C. Dodgion  
 Professional Surveyor No. 8069

12/23/2019  
 Date