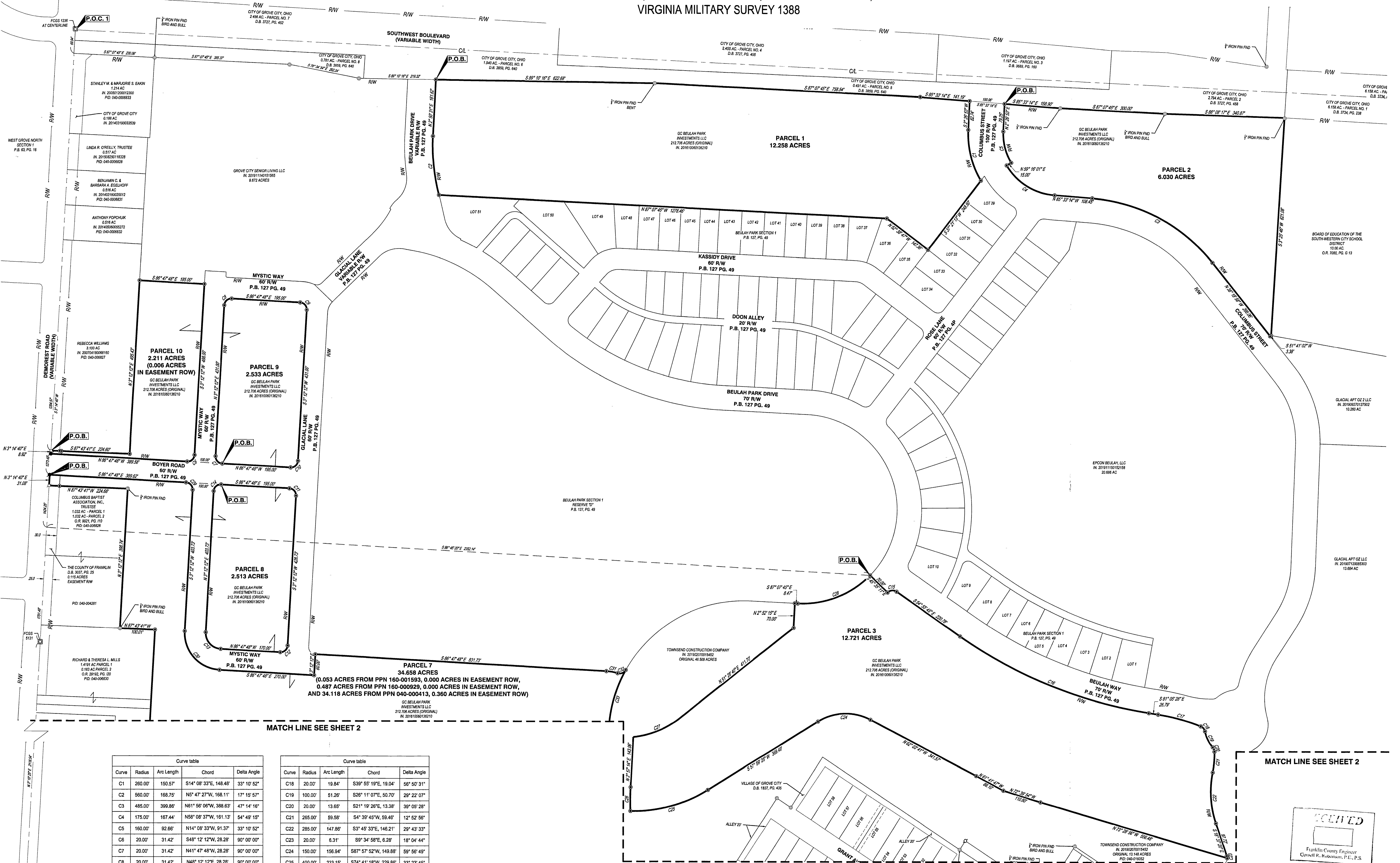


BOUNDARY SURVEY

STATE OF OHIO, COUNTY OF FRANKLIN, CITY OF GROVE CITY, VIRGINIA MILITARY SURVEY 1388



MATCH LINE SEE SHEET 2

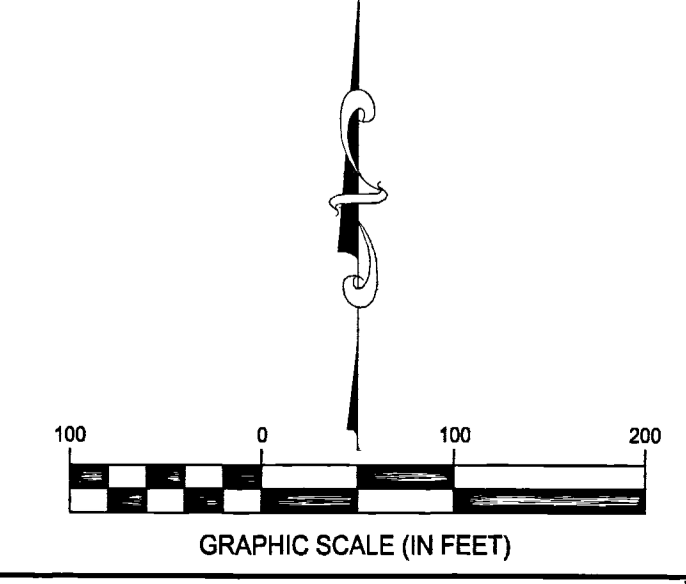
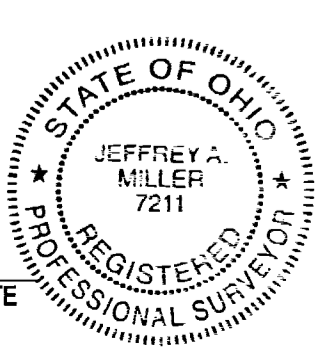
MATCH LINE SEE SHEET 2

Curve	Radius	Arc Length	Chord	Delta Angle
C1	260.00'	150.57'	S14° 08' 33"E, 148.40'	33° 10' 52"
C2	560.00'	168.75'	N5° 47' 27"W, 168.11'	17° 15' 57"
C3	485.00'	399.86'	N61° 56' 06"W, 388.63'	47° 14' 16"
C4	175.00'	167.44'	N58° 08' 37"W, 161.13'	54° 49' 15"
C5	160.00'	92.66'	N14° 08' 33"W, 91.37'	33° 10' 52"
C6	20.00'	31.42'	S48° 12' 12"W, 28.28'	90° 00' 00"
C7	20.00'	31.42'	N41° 47' 48"W, 28.28'	90° 00' 00"
C8	20.00'	31.42'	N48° 12' 12"E, 28.28'	90° 00' 00"
C9	20.00'	31.42'	S41° 47' 48"E, 28.28'	90° 00' 00"
C10	20.00'	31.42'	S48° 12' 12"W, 28.28'	90° 00' 00"
C11	20.00'	31.42'	S41° 47' 48"E, 28.28'	90° 00' 00"
C12	20.00'	31.42'	S48° 12' 12"W, 28.28'	90° 00' 00"
C13	45.00'	70.69'	N41° 47' 48"W, 63.64'	90° 00' 00"
C14	20.00'	31.42'	N48° 12' 12"E, 28.28'	90° 00' 00"
C15	20.00'	28.15'	N84° 44' 32"E, 25.89'	80° 39' 26"
C16	1285.00'	596.75'	S68° 00' 36"E, 581.66'	26° 09' 43"
C17	565.00'	125.71'	S74° 43' 01"E, 125.45'	12° 44' 54"

Curve	Radius	Arc Length	Chord	Delta Angle
C18	20.00'	19.84'	S39° 55' 19"E, 19.04'	56° 50' 31"
C19	100.00'	51.26'	S26° 11' 07"E, 50.70'	29° 22' 07"
C20	20.00'	13.65'	S21° 19' 28"E, 13.38'	39° 05' 28"
C21	265.00'	59.58'	S4° 39' 48"W, 59.46'	12° 52' 56"
C22	265.00'	147.86'	S3° 45' 33"E, 146.21'	29° 43' 33"
C23	20.00'	6.31'	S9° 34' 58"E, 6.28'	18° 04' 44"
C24	150.00'	156.94'	S87° 57' 52"W, 149.88'	59° 56' 49"
C25	400.00'	233.15'	S74° 41' 18"W, 229.86'	33° 23' 45"
C26	715.00'	68.38'	N0° 12' 51"E, 68.36'	5° 28' 47"
C27	265.00'	148.63'	N67° 32' 43"E, 146.69'	32° 08' 07"
C28	270.00'	228.35'	N68° 38' 32"E, 221.60'	48° 27' 28"
C29	20.00'	31.42'	S41° 47' 48"E, 28.28'	90° 00' 00"
C30	105.00'	164.93'	S41° 47' 48"E, 148.49'	90° 00' 00"
C31	132.50'	32.61'	S79° 44' 46"E, 32.53'	14° 06' 03"
C32	20.00'	27.29'	N68° 12' 42"E, 25.22'	78° 11' 07"
C33	385.00'	175.82'	S16° 02' 11"W, 174.29'	26° 09' 55"

- LEGEND**
- IRON PIN FND
 - SET 5/8"x30" REBER WITH YELLOW I.D. CAP STAMPED "CESO"
 - ⊠ FRANKLIN COUNTY MONUMENT FND
 - ⊕ MAG NAIL FND
 - ⊖ MAG NAIL SET
 - ⚡ RAIL ROAD SPIKE FND

BASIS OF BEARING:
THE BASIS OF BEARING IS BASED ON A BEARING OF NORTH 03° 14' 40" EAST FOR THE CENTERLINE OF DEMOREST ROAD BETWEEN FRANKLIN COUNTY MONUMENTS F.C.G.S. 5151, F.C.G.S. 1298 AND F.C.G.S. 1506, AS SHOWN ON THE CENTERLINE SURVEY PLAT, SHEET 1 OF 2 FOR DEMOREST ROAD AND AVAILABLE AT THE FRANKLIN COUNTY ENGINEER'S OFFICE.



BOUNDARY EXHIBIT

BEULAH PARK

CITY OF GROVE CITY, FRANKLIN COUNTY, OHIO

SCALE: 1"=100' DATE: 12/3/2019

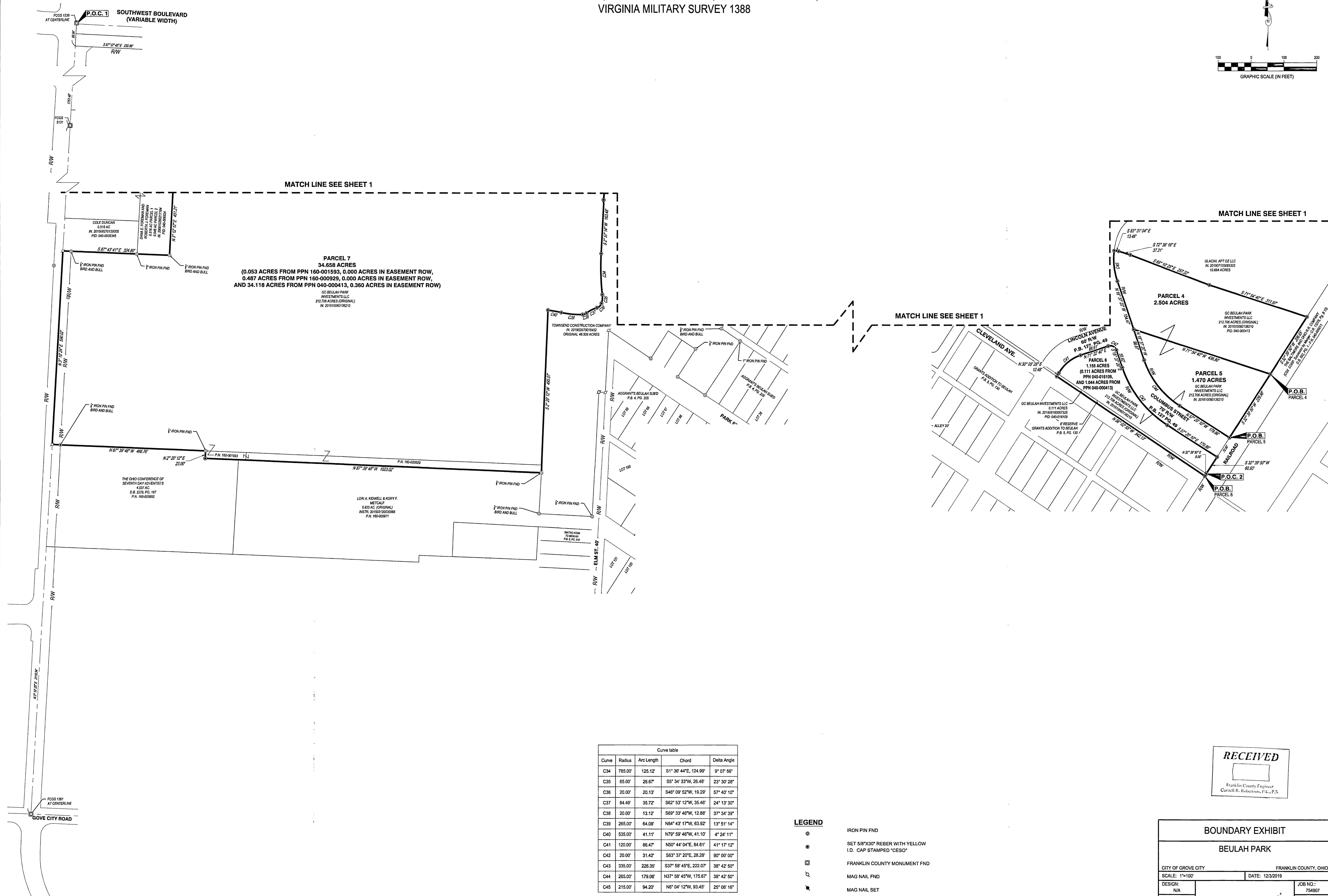
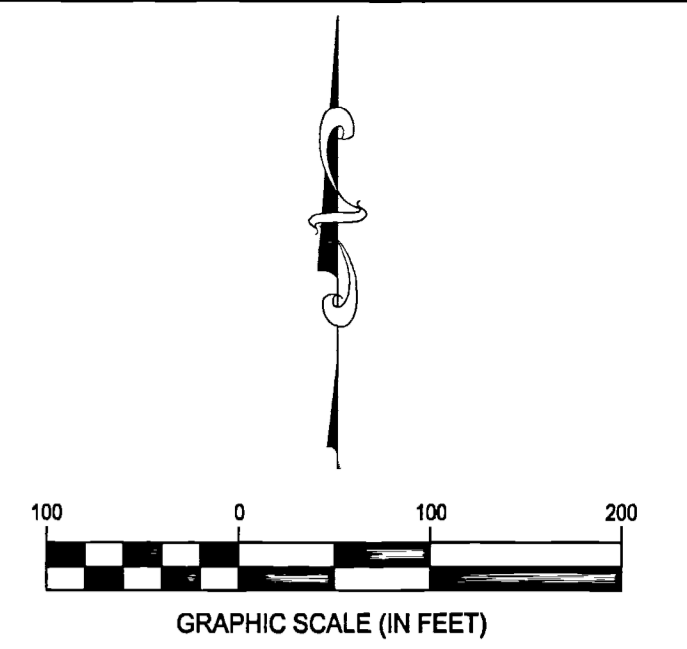
DESIGN: N/A JOB NO.: 754907

DRAWN: ALB SHEET NO.:

CHECKED: TW

1 OF 2

BOUNDARY SURVEY
 STATE OF OHIO, COUNTY OF FRANKLIN, CITY OF GROVE CITY,
 VIRGINIA MILITARY SURVEY 1388

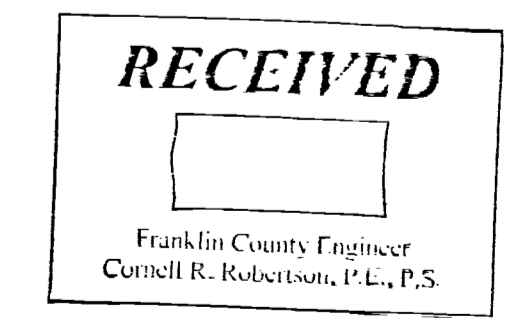


PARCEL 7
 34.658 ACRES
 (0.053 ACRES FROM PPN 160-001593, 0.000 ACRES IN EASEMENT ROW,
 0.487 ACRES FROM PPN 160-000929, 0.000 ACRES IN EASEMENT ROW,
 AND 34.118 ACRES FROM PPN 040-000413, 0.360 ACRES IN EASEMENT ROW)

PARCEL 5
 1.470 ACRES
 (0.111 ACRES FROM PPN 040-016109,
 AND 1.044 ACRES FROM PPN 040-000413)

Curve	Radius	Arc Length	Chord	Delta Angle
C34	785.00	125.12	S11°36'44"E, 124.99'	9°07'56"
C35	65.00	26.67	S5°34'33"W, 26.48'	23°30'28"
C36	20.00	20.13	S46°09'52"W, 19.29'	57°40'10"
C37	84.49	35.72	S62°53'12"W, 35.46'	24°13'30"
C38	20.00	13.12	S69°33'46"W, 12.88'	37°34'39"
C39	265.00	64.06	N84°43'17"W, 63.92'	13°51'14"
C40	535.00	41.11	N79°59'46"W, 41.10'	4°24'11"
C41	120.00	86.47	N50°44'04"E, 84.61'	41°17'12"
C42	20.00	31.42	S63°37'20"E, 28.28'	90°00'00"
C43	335.00	226.35	S37°58'45"E, 222.07'	38°42'50"
C44	265.00	179.08	N37°58'45"W, 175.67'	38°42'50"
C45	215.00	94.20	N6°04'12"W, 93.45'	25°06'16"

- LEGEND**
- IRON PIN FND
 - SET 5/8"x30" REBER WITH YELLOW I.D. CAP STAMPED "CESO"
 - ⊗ FRANKLIN COUNTY MONUMENT FND
 - ⊗ MAG NAIL FND
 - ⊗ MAG NAIL SET
 - ⊗ RAIL ROAD SPIKE FND



BOUNDARY EXHIBIT	
BEULAH PARK	
CITY OF GROVE CITY	FRANKLIN COUNTY, OHIO
SCALE: 1"=100'	DATE: 12/3/2019
DESIGN: N/A	JOB NO.: 754907
DRAWN: ALB	SHEET NO.:
CHECKED: TW	2 OF 2